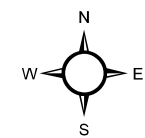


# SHREWSBURY, VT FUTURE LAND USE MAP

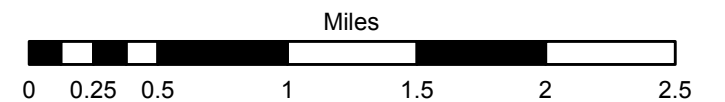
## Map 2

### Legend

- Structures
  - 2000 Foot Contour Line
  - Rivers and Streams
  - ▨ VLT\_RR\_region\_Mar08
  - ▨ Conserved Lands: Public and Private
  - Lakes, Ponds and Major Rivers
- ### LAND USE DISTRICTS
- ▨ North Shrewsbury/Northam
  - ▨ Brown Covered Bridge Area
  - ▨ Cuttingsville
  - ▨ Shrewsbury Center
  - ▨ Village Residential: North Shrewsbury
  - ▨ High Elevation District
  - ▨ Limited Res. (Min. Lot Size 10 Acres)
  - ▨ Rural Res. (Min. Lot Size 4 Acres)

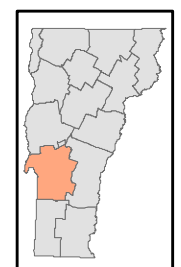


Shrewsbury Town Plan  
Draft September 17, 2018

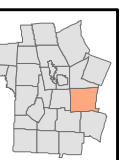


### Road System

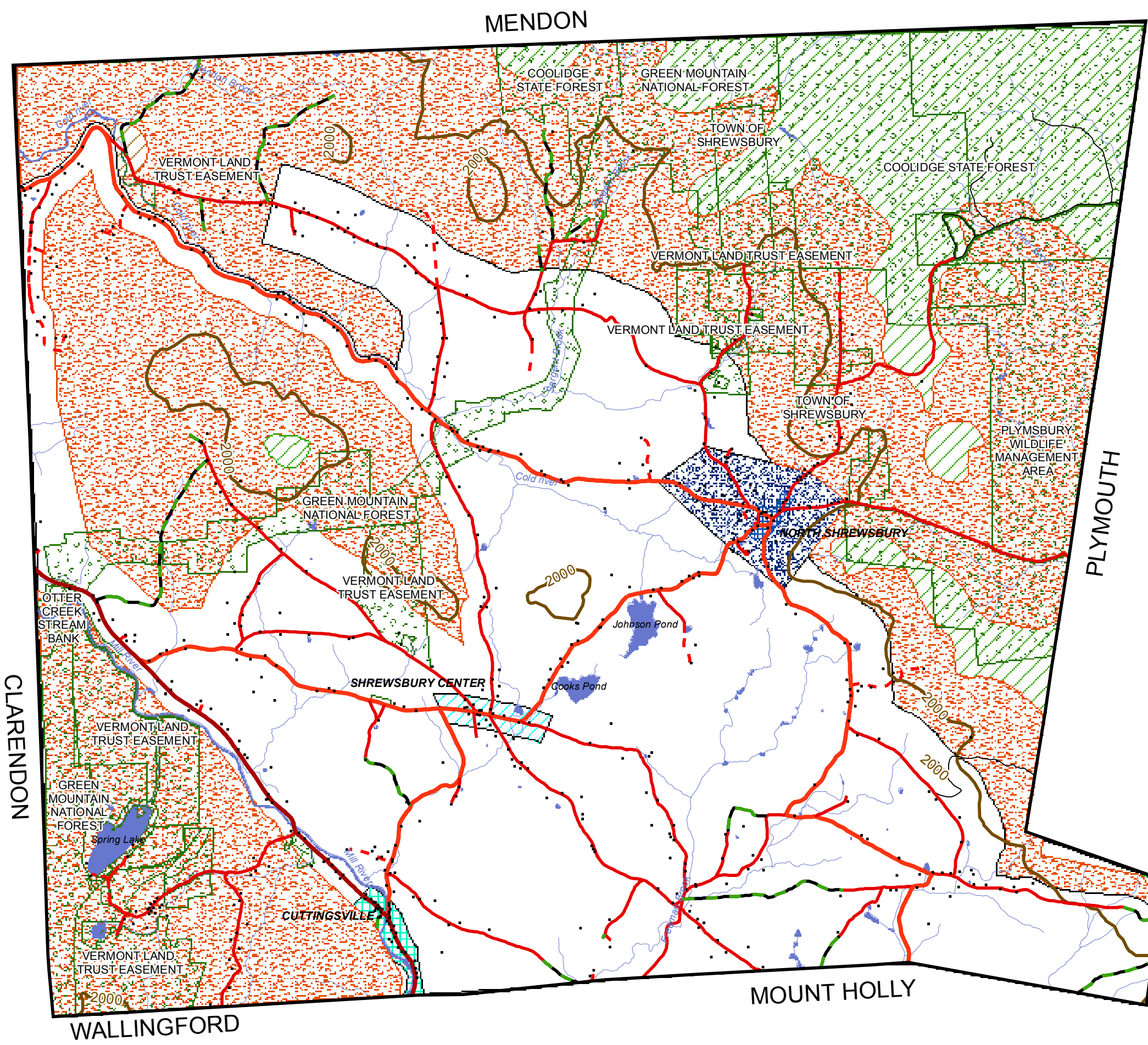
- Town Class One
- Town Class two
- Town class Three
- Town Class Four
- - - Private/ Unknown Roads
- US and State Highways



Date: 4/15/2014



Document Path: E:\RRPC\SHREWSBURY\planupdate maps 2013\TP 2008\FLU Map 2013.mxd



CLARENDON

WALLINGFORD

MOUNT HOLLY

MENDON

PLYMOUTH