



LOTTERY ROAD WILDLIFE CORRIDOR PROJECT

SHREWSBURY, VERMONT

Preserving A Key Wildlife Corridor

The Vermont Department of Fish & Wildlife is seeking to conserve an important 527-acre property at the end of Lottery Road which will provide a critical wildlife habitat for food, wintering, breeding and sustaining populations.

You will Help Protect:

- A critical link in the north-south wildlife corridor which connects the Coolidge, Aitken, and Jim Jeffords State Forests to conserved land for the Appalachian Trail/Long Trail and the Green Mountain National Forest.
- Productive habitat for black bear, white-tailed deer, bobcat and grouse, as well as many other species.
- A diverse landscape including early succession forest and mature stands of sugar maple, red oak, hickory, hophornbeam, and butternut.
- Access to public land for hunting, bird watching, snowshoeing, hiking, skiing.

“The Lottery Road Wildlife Corridor represents a key parcel in a strategic, state-significant wildlife corridor connecting state land to the north with federal and privately conserved land to the south. The property is part of an area we have mapped as a highest ecological priority and one that is critical for maintaining ecological function within Vermont.”

We also view the parcel as a ‘highest priority representative physical landscape’, meaning that it is one of the highest quality examples in Vermont of lands containing a particular combination of physical features such as bedrock. Conserving these highest priority physical landscapes is a method of maintaining high species diversity throughout the state.

We are excited to be working with the Shrewsbury Conservation Commission on this critical acquisition.”

--Louis Porter, Commissioner, Vermont Department of Fish & Wildlife

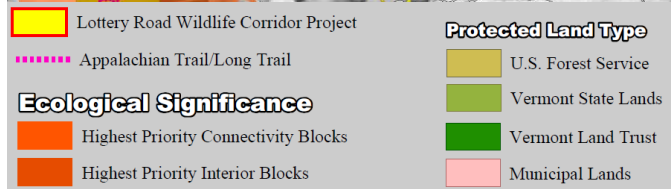
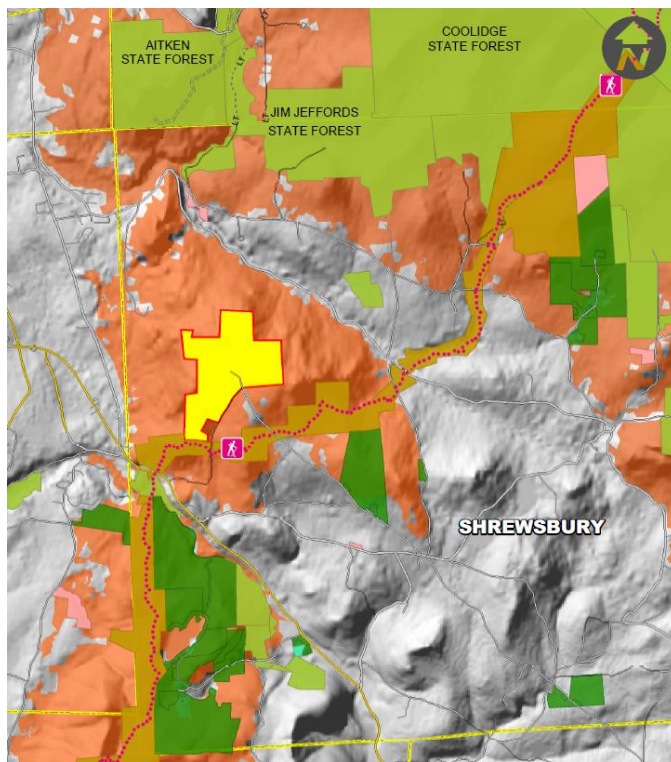
Conservation Plan

The Vermont Department of Fish & Wildlife has entered into a purchase and sale agreement for a strategically located parcel at the west end of Lottery Road. From an original \$1 million+ asking price, cost was reduced to \$450,000, including all related acquisition charges.

The State has committed \$360,000 towards this purchase. The Vermont Land Trust has pledged \$44,000 from a bequest made by Shrewsbury resident Joan Sibley, which with private donations pledged to date **leaves \$46,000 to be further raised** before the March 2020 closing deadline.



Recent bear tracks on this property



Please Give

The Vermont Department of Fish & Wildlife has committed 80% of the funds needed to purchase the Lottery Road Wildlife Corridor, reflecting its key ecological importance. Additional support from the Vermont Land Trust has raised the funding to 90%.

The State's exceptional commitment provides us with a one-time opportunity to conserve this vital land. Now it is our turn to make a difference. **Please consider a generous tax-deductible donation to this important project.**

Please make check payable to **Vermont Habitat Stamp** with the note: Lottery Road Wildlife Corridor. Your donation should be mailed to:

Chris Clarke, Treasurer
 Shrewsbury Conservation Commission
 Shrewsbury Town Office
 9823 Cold River Road
 Shrewsbury, VT 05738

Contacts:

Louise Duda
 802-492-3327
 vtzippity@gmail.com

Mark Youngstrom
 802-492-3502
 marky@vermontel.com

