



Times of Shrewsbury



September 2024

RARE LYNX IN SHREWSBURY CONFIRMED!

On Saturday, August 17, 2024, about 6:30pm, I was headed south on Russellville Road just a short distance from home when I noticed an animal of some kind walking in the same direction, but on the east side of the road. Its gait resembled a leisurely saunter and as I got closer its coloring and stripes jumped out at me, as did its overall feline look. Very surprised, it was immediately apparent that this was either a bobcat or, could it possibly be, the threatened, rarely seen lynx?

As I pulled abreast of it, the animal showed no concern at all, but continued on in his/her walk, not even looking at me or, other than turning an ear, alerting to my greeting. Its very lean features were of concern as it was not clear if this was its natural body-type or was perhaps suffering from malnutrition, disease or some other malady. I kicked myself that I had left my camera at home, so in the hope that no traffic would come in the interim to disturb it, I darted the short distance home and grabbed it.

Upon returning, the cat was sitting on the roadside, facing me allowing the only full-on frontal view I had of it during our encounter. It remained unconcerned at my presence, so I slowly passed by, turned around and came back alongside it. The window came down and the camera began rolling at once and for the next two minutes we proceeded again side-by-side as the cat continued its walk in the same direction. I still could not tell specifically whether this was a bobcat or lynx.

I have seen bobcats in Shrewsbury on two prior occasions (on the CCC road and the dam on our pond), but this creature did not look like what I remembered. It just seemed so lean and athletic. Perhaps it was the elusive lynx after all. After a couple of minutes of tolerating me, I became uneasy at perhaps outstaying my welcome, so when it paused, I wished it well and went home.

Because this seemed so unusual, and maybe concerning because of the cat's health, I immediately called our local game warden, but just got his voicemail. Some quick online research seemed to confirm that this might be a lynx (stature, coloring, black tail, ear tufts). So first thing the next morning, a Sunday, I emailed the state lynx expert, Bree Furfey, and the public communications officer at the Vermont

Fish and Wildlife Department, describing my encounter and sending them an image (see accompanying screenshots).

Not expecting to hear anything back until the next business day, I was surprised to receive an email from the information officer soon after describing their enthusiasm, relating that it was already being shared within the department. He advised that they would make a determination of what kind of creature this is and let me know.



Today, August 19, I received a call from Ms. Furfey advising that this was indeed a lynx and that it was highly unusual to see one this far south. They are very excited to have proof of lynx in Vermont as they are seldom seen, much less photographed

or videotaped. I agree, it was exciting, indeed a privilege, to have this very unique experience.

For more, the video is available on my recently created Facebook page:

<https://www.facebook.com/profile.php?id=100075841532225>

~Article and photo by Gary G. Shattuck

More about Lynx Sightings

The last confirmed sighting of a Canada lynx in Vermont was in 2018. The current sightings in Shrewsbury were along Russellville Road, Lincoln Hill Road, and Route 103. Bree Furfey, Vermont Wildlife Fur Biologist, said "It is rare because these cats don't usually venture this far south, staying mainly in New Hampshire and Maine to take advantage of the large snowshoe hare population. She said this cat is likely a dispersing juvenile male." She noted the cat's behavior in the video fits the way a lynx would hunt for food, while continuing to move through an area. Bree reports that "there is no need to fear the animal. If you see a lynx, keep your distance and respect the animal."

If you think you've seen a lynx, try to get a picture and then file a report. This is important for rare species tracking statewide. The Vermont Fish and Wildlife Department's web page <http://vtfishandwildlife.com>, has a Rare Furbearer reporting form that citizens can use to report their sightings.

~Linda Shelvey, Wildlife Road Crossings Project, Shrewsbury Conservation Commission

SHREWSBURY DAY
Sunday, September 15
(Rain date Sunday, September 22)
See list of events inside this issue



BURN PERMITS

If you are plan to burn brush you **MUST** call for a burning permit. **Contact Forest Fire Warden Kevin Brown 802-345-8668 or Deputy Forest Fire Warden Al Ridlon, Jr 802-282-3642.** The landowner is responsible to control a brush fire, ensure you have proper tools, water supply, and people to assist in containing the fire.

**WIRENUTS
ELECTRICAL
LLC**

bbates@vermontel.net

**REBECCA BATES
LICENSED
ELECTRICIAN
802-492-3406
802-353-4376**

TAXES DUE OCTOBER 4, 2024 By 7pm

Payments can be delivered to the town office, mailed, placed in the drop box at the town office (to the left of the front door), made by credit card online at www.officialpayment.com (Credit card deadline is October 2). If you plan to pay in cash, please deliver directly to the treasurer.

Town Treasurer regular hours are:
Every Monday from 9am to 12noon

Additional days/times available for payments:
Saturday, September 28 from 10:00am to 12:00pm
Thursday, October 3 from 12:00pm to 3:00pm
Friday, October 4 from 12:00pm to 7:00pm

If you have not filed your Homestead Declaration, the state website at www.tax.vermont.gov/property-owners will direct you to the proper form and the Property Tax Adjustment form is also available, if you qualify.

State of Vermont Tax Information for contact is:

Phone: (802) 828-2865
Toll Free: (866) 828-2865
Email: tax.individualincome@vermont.gov
Fax: (802) 828-2720

Thank you, and call if you have questions.

Linda McGuire, Treasurer
Town of Shrewsbury
9823 Cold River Rd, Shrewsbury, Vermont 05738
Shrewsburytreas@vermontel.net
Town Office 492-3558

TIMES OF SHREWSBURY

The Times of Shrewsbury is published monthly from February through December, and compiled by volunteers from material submitted by residents with the goal of informing townspeople of what is happening in Shrewsbury. The views and opinions expressed in articles are solely those of the author and not necessarily those of the editors.

All submissions must be accompanied by the name of the submitting person and are printed at the editors' discretion subject to editing for length and clarity. Letters to the Editor exceeding 350 words will be subject to editing for length. Any information piece or informational political letters (without specific party or vote appeal) will be subject to the guidelines previously described.

A writer of a letter that names a Shrewsbury resident or organization in a critical manner must get copies to the resident or organization, and to the Times by the 10th of the month prior to publication or it will not run. If the named person or organization indicates in writing to the writer and to the Times that they choose not to respond, the letter will run. If the named entity responds, the response and initial letter will run in the same issue.

There is no charge for: jokes, poems, nature reports, family event announcements, feature articles, or letters that are not commercial. Also, there is no charge for appropriate notices of free items.

Articles and Advertisements: Deadline for submission is 5pm on the 20th of the month prior to publication; exceptions will be announced in the prior month's Times.

Ads in the Times are for area businesses, local non-profit events, and local ballot election advertisements.

Best Formats: Articles: Word or as an email message with no formatting. Photos: jpeg. Ads: jpeg or Word document.

Monthly advertising fees and relative sizes:

Full page	\$100	(7.5"w x 9.5"h)
Half page	\$60	(7.5"w x 4.5" h or 3.5"w x 9.5"h)
Quarter page	\$12	(7.5"w x 2.5" h; or, 3.5"wx 4.5"h)
Business card	\$6	(3.5"w x 2"h)
Classified ad	\$3	(15 words or less)

Payment due by the 20th of the month prior to publication.

7/15/24

Chryl Martin

~ Rich Biziak

Times of Shrewsbury, P. O. Box 373, Cuttingsville, VT 05738

Email: shrewsburytimes@gmail.com

Online: www.shrewsburyvt.org and

<http://www.shrewsburyhistoricalsociety.com>

SHREWSBURY COMMUNITY CALENDAR

Aug 25	--	*Anniversary Cake at Pierce's Store to celebrate the 15 th Anniversary
Aug 25	7pm	*Science Book Club discussion at the Library
Aug 27	Noon	*Prayer Shawl Meeting Upstairs at the Meeting House
Aug 28	--	*First Day of School
Sept 1	4pm	*Writers' Group at the Library
Sept 2	5:30pm	Shrewsbury Historical Society meeting at the Museum
Sept 7	10am-noon	**"Batty for Bats" Walk and Talk program by Shrewsbury Conservation Commission
Sept 14	5 – 7pm	*Pierce's Sort of Shrewsbury Slam
Sept 15	11am-until	SHREWSBURY DAY (rain date Sept 22) <i>Parade, Games, Music, Dancing, & Lunch</i>
Sept 13	4pm-6pm	*Wine Tasting at Pierce's Store
Sept 20	7pm	*Israel/Palestine Talk sponsored by Shrewsbury Library at the Meeting House
Sept 21	9am-2pm	*Annual Book Sale at the Shrewsbury Library
Sept 22	2pm	*Tech Open House at the Shrewsbury Library
Sept 22	4pm	*Science Book Club discussion at the Library
Sept 29	3pm	*Shrewsbury Singers "Singing on a Sunday Afternoon" at the Meeting House
Oct 4	by 7pm	*Taxes due
Oct 5	8:30am	*Shrewsbury "Center" Cemetery clean-up day
Oct 5	8:30am-12:30pm	*SWAC Hazardous Waste Collection Event at Fair Haven Transfer Station
Oct 5	5:30-7:30pm	*Chili Cookoff at Pierce's Store

*see elsewhere in newsletter for details

TIMES OF SHREWSBURY

online at
www.shrewsburyhistoricalsociety.com
 and
www.shrewsburyvt.org



Deadline for submission to *Times of Shrewsbury* is by 5:00pm on the 20th of each month.

REGULAR MEETINGS and EVENTS

Selectboard Meeting	1 st & 3 rd Wednesdays – 6:30pm at Town Office
Bone Builders	Tuesdays & Thursdays--May-Oct: 9-10am; Nov-Apr: 10-11am at Meeting House
Development Review Board	4 th Wed -7pm at Town Office; check town website for agenda
Library Trustees Meeting	2 nd Tuesday – 7pm at Shrewsbury Library
Mill River Unified Union School Board Mtg	1 st Wed 7pm @ MRHS & 3 rd Wed. 7pm at MRHS unless otherwise warned
Planning Commission	2 nd & 4 th Tuesdays 7pm at Town Office
Prayer Shawl Group	4 th Tuesday at 12noon upstairs at the Meeting House
Religious Society of Friends (Quakers)	Sundays – 10am via Zoom; contact wildernessfriends@gmail.com
Shrewsbury Community Church	Sundays – 10:30am - Worship service
Shrewsbury Conservation Commission	1 st Tuesday @ 5:15pm at 450 Frank Lord Road.
Shrewsbury Historical Society	1 st Monday - 5:30pm at the Museum
Shrewsbury Historical Society Museum	Open 1-3pm Sundays only from July 7 to October 27, 2024
Shrewsbury Singers	Sundays 9-10:30am and Tues 6:30-8:00pm @ Meeting House
Shrewsbury Sno-Birds	2 nd Tuesday – 7pm at Southside Steakhouse in Rutland
Shrewsbury Volunteer Fire Department	Thursdays – 7pm at the Cuttingsville Station

Shrewsbury Town Website: www.shrewsburyvt.org

Clerk's Office	492-3511	Mondays & Thursdays 8:30am-1pm; Wednesdays 1pm-6pm (Fax 802-492-3383)
Town Garage	492-3656	(Follow prompts to report roadway blockage on non-work days)
Listers	492-2009	Available by appointment
Treasurer's Office	492-3558	Monday 9am-11am
Transfer Station	492-3867	Sunday 8am-4pm ~ Wednesday 12noon-6pm
Library	492-3410	Hours: Mon 10am-12noon; Tues 7-9pm; Wed 10am-5pm & 7-9pm; Thurs 7-9pm; Fri 10 12noon; Sat 10am-12noon
Meeting House	492-6050	Reservations: 492-3361 or julanne@vermontel.net
News Flash Email:	vtbenbeano@gmail.com or benbeano@vermontel.net	an email list for Urgent and reminder news information
Cuttingsville Post Office	492-3585	<u>Window Hours</u> Mon-Fri 7:30am-10:30am and 11:30am-2:30pm; Sat 8am-11am <u>Lobby Hours</u> Mon-Fri 7:30am-5:00pm and Sat 7:30am-11am
Burn Permit:	Forest Fire Warden Kevin Brown 802-345-8668 or, Deputy Fire Warden Al Ridlon, Jr. 802-282-3642	
Animal Control Officer:	Adrienne Raymond 802-492-3578	
1 st Constable:	Aaron Haupt 558-9980	Game Warden: Tim Carey 793-2776
Emergency Management	Aaron Korzun 492-3362	Green Mountain Power outage 1-800-451-2877
Medical-Police-Fire Emergency Dial	911	Ambulance 773-1700 Rutland Hospital 775-7111

[Updated 7/1/24]

SHREWSBURY SELECTBOARD MINUTES

The Selectboard meets the 1st and 3rd Wednesday at 7pm at the Town Office.

August 7, 2024: Minutes of Selectboard Meeting

Present at meeting: Selectboard members: Aaron Korzun, Marc Cimonetti, Francis Wyatt. Town Clerk: Rebecca Rice. Treasurer: Linda McGuire. Selectboard Interim Administrative Assistants: Laura Black, Nancy Bell.

Members of the public: Judith Thomas. Linda Fontana. Francis Kinney.

The meeting was convened at 6:30 PM

Agenda: Motion made by A. Korzun to follow the agenda. F. Wyatt seconded. All in favor, motion approved.

Tax Rate: Aaron Korzun made a motion to accept the tax rates as calculated by the Treasurer Linda McGuire of the following rates:

Homestead Rates: Town: 0.6172 School: 1.6644
Appropriations: 0.1249 Local Agreement: 0.0016 Total:
2.4082

Non-Resident Rates: Town: 0.6172 School: 1.7742
Appropriations: 0.1249 Local Agreement: 0.0016 Total:
2.5180

Seconded by Marc Cimonetti. Approved.

Aaron Korzun made a motion to not assess penalties for late homestead declarations. M. Cimonetti seconded. Approved.

Russellville Water Damage: Linda Fontana reported that since the July 2023 flooding there has been additional drainage coming onto her property and causing issues. She believes that this is a Town issue and would like for the water to be diverted away from her property. We discussed potential mitigation. The Selectboard will work with the Road Commissioner to see what can be done.

Pre-qualifying for Hazard Mitigation Funds: Nancy Bell reported on the Mountain School Road project (dam removal and box culvert on Northam Rd). She's looking into various funding sources in addition to a FEMA Hazard Mitigation grant.

IT Consulting: Met with Jonathan Gicewicz of JEG DESIGN INC. Discussed potentially getting a Shrewsbury domain and have emails that use that domain.

For online meetings Jonathan recommends using a Youtube channel, which is free. Can then have a link for people to view the meeting.

For digital document storage Jonathan recommends storing it on Google Drive.

New Business/Open to the Public: Francis (Frank) Kinney is a new resident in Shrewsbury. He's concerned with the frequent power outages on a section of Northam Road.

Judith Thomas is concerned with privacy issues from drones. She's had a drone around her house, but doesn't know whose it is. She would like for Shrewsbury to require registration for drones flown in Shrewsbury.

Review Minutes: A. Korzun made a motion to accept the 7/17/2024 Selectboard meeting minutes. Seconded by M. Cimonetti. Approved.

Review Orders: F. Wyatt made a motion to approve Selectboard Orders #8 for \$46,597.70 and Road Orders #8 for \$16,313.38. Seconded by M. Cimonetti. Approved.

Adjourned at 8:55 PM

Respectfully submitted, Francis Wyatt

These minutes are unofficial until approved by the Selectboard at the next regularly scheduled meeting.

Editor's Note: The minutes have been edited for brevity but not content. For complete minutes, go to the Town website www.shrewsburyvt.org

~~~~~

## Household Hazardous Waste Collection Event

Solid Waste Alliance Communities (SWAC)

**Saturday, October 5, 2024**

8:30am - 12:30pm - Fair Haven Transfer Station, Fair Haven Avenue, Fair Haven, Vermont

Service is free to: Residents of the SWAC Towns ONLY (see below) Proof of residency may be required (i.e Transfer Station sticker).

For more detailed info: <https://rutlandcountyswac.org>

### WHAT TO BRING:

Any substance with labels that say: caustic, toxic, corrosive, poison, flammable, danger, warning, caution, use in an open environment. Examples include: antifreeze, turpentine, stains, varnishes, carburetor cleaner, creosote, drain cleaner, propane tanks, mercury thermostats, oven cleaner, fertilizer, paint strippers, thinners, solvents, gas treatments, old gasoline, engine degreaser, floor, metal, and furnisher polishes, latex and oil based paint, pool chemicals, and pesticides, herbicides, and fungicides (fertilizer without pesticides, herbicides, and fungicides is not a hw - use it for its intended purpose), and batteries (single use or rechargeable - for large batteries).

**Please note** that there are TWO Rutland solid waste districts. Shrewsbury is a member of SWAC but NOT a member of RCSWD:

- **SWAC (Solid Waste Alliance Communities):** Benson, Chittenden, Fair Haven, Pawlet, Rutland Town, Middletown Springs, Shrewsbury, Sudbury, Tinmouth, and West Haven. **SWAC** Household Hazardous Waste events in Rutland are held at the **Rutland Town Transfer Station off Post Road, Rutland, VT.**
- **Rutland County Solid Waste District Member towns are:** Brandon, Castleton, Clarendon, Danby, Hubbardton, Ira, Killington, Mendon, Mt. Holly, Mt. Tabor, Pittsfield, Pittsford, Poultney, Proctor, Rutland City, Wallingford, Wells, West Rutland. **RCSWD** Household Hazardous Waste events are on Gleason Road, Rutland.

## NEWS FROM THE TOWN CLERK

The State Primary Election has now come and gone. The results for the Primary Election are now up on the Town Website. I am getting ready for the November General Election.

### General Election

Verify your mailing address:

All Shrewsbury registered voters are encouraged to log onto My Voter Page at <https://mvp.vermont.gov> to verify your mailing address for the November General Election. If you are having any difficulties, please contact the Town Clerk to help facilitate any corrections to your Voter Registration information.

shrewsburyclerk@vermontel.net or 492-3511

Mail-In Ballots: The State is sending all registered voters ballots by mail. These ballots will be mailed out in late September. They will also include voting for state and local elections.

- You can vote your ballots as soon as you receive them or any time before 7:00pm on Tuesday, November 5, 2024.
- You can either mail your ballots to the Town office, bring them in to the office or drop them in the Dropbox outside the office any time until 1:00pm on November 4, 2024.
- After that time, you will need to bring them to the Polling Place at the Meeting House, 88 Lottery Road, Shrewsbury, Vermont between 10:00am and 7:00pm.

Voting in Person: If you are voting in person, it would be appreciated if you would bring the ballot you received from the State in the mail. Although there will be ballots available at the election, you will need to complete two additional forms to certify that you:

- 1) lost your ballots or no longer have it and
- 2) that you did not previously cast your ballot.

This is a reminder that both Dog Licenses and Land Posting need to be renewed annually.

#### Dog Licenses

The deadline for renewing your dog license without a late fee was April 1, 2024. The late fee is \$4.00. If you have not renewed your dog's license, please do so.

#### Land Postings

Land Posting registrations are valid for one year from the date of issuance and need to be renewed on an annual basis from the initial date of obtaining them. In looking through the current registrations, I am only seeing six active registrations. I know there are more of you who intend to have your land posted but may not be aware that posting needs to be renewed annually. With hunting seasons coming upon us, if you want to have your Posting valid, you need to renew it.

If you have any questions, feel free to contact me.

Rebecca A. Rice, Shrewsbury Town Clerk  
802-492-3511

9823 Cold River Road, Shrewsbury, VT 05738, or  
shrewsburyclerk@vermontel.net.

Dear Voters,

I would like to thank everyone that voted on 8/13. Whoever you voted for, I applaud you participating in the system.

Rather than be too longwinded, I'd like to direct you to the VtDigger's candidate guide for information:

<https://vtdigger.org/2024-primary-election-guide/>

for a helpful selection of questions asked of every candidate.

I have a website with some good information, thank you, Scott Garren.

**VoteAdrienneRaymond.com**

I welcome calls to discuss issues that are of interest to people. My number is 802-353-0973.

So, until next month, thank you.

*Adrienne Raymond*

Paid for by Adrienne Raymond for Vermont  
Adrienne Raymond, 2318 Lottery Rd, Shrewsbury, VT  
Treasurer: Scott Garren, 135 Spring Lake Rd,  
Shrewsbury, VT

*Shrewsbury Library's*



**Saturday, September 21st**

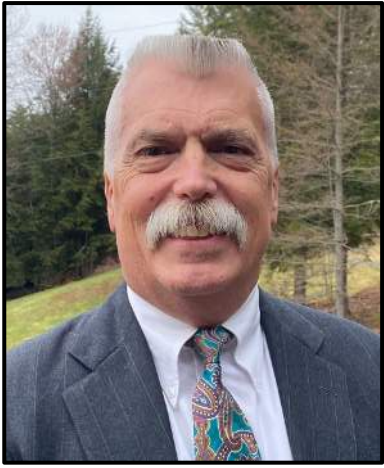
**Beginning at 9 am**

**and ongoing under the tent  
for two weeks**

**\*Honor system\***

**Baked goods will be on sale  
on the 21st,  
come pick up some sweet treats!**





**Meet Kevin Winter  
Vermont Legislative Candidate**

Kevin C. Winter is a Ludlow resident of 25 years and a 2024 candidate for the Vermont House of Representatives for the Ludlow, Mount Holly and Shrewsbury district.

Kevin was born in St. Louis, Missouri, is the oldest of four children and by the age of four had moved 4 times following his father's career with IBM. Kevin enjoyed his high school years working part time and was a "jack of all sports" (except basketball). After high school he graduated from Alfred University with a BS in Engineering and enjoyed exhilarating success in his 45-year career in corporate Manufacturing and Sales for GE, UTC, Teco-Westinghouse, Airgas, Kalow and others and also understands the hardships and challenges of lack of work during times of economic downturns.

Kevin is now retired and happily married 42 years, has three successful adult children and seven grandchildren. Earlier in their lives two of Kevin's sons were addicted to opioids and are now clean and sober many years through rehabilitation and free by God's Grace. They are now productive and loving husbands.

Kevin was on a NY school board for 11 years when his children were young, and is an Elder in his local church for over 20 years now.

Kevin's unique life experiences have equipped him to understand the economic needs of all Vermonters including businesses and those struggling to make ends meet. He has keen personal insight into how to help Vermonters with the current drug addiction crisis and a solid understanding of school funding and operations to tackle Vermont's failing educational system.

Kevin is a constitutional originalist and wants to preserve individual liberties embodied especially in the 1st and 2nd Amendments, and will bring balance back to the Legislature on the excessive taxes and financial burdens on Vermonters that have been created by the current Democratic Super Majority in Montpelier.

*Submitted by KcW Legislative Campaign*

**Paid Political Advertisement**



**Rutland Regional Planning Commission**

**RRPC Launches Second Phase of Public Engagement for 2026 Rutland Regional Plan  
September 2024**

The Rutland Regional Planning Commission (RRPC) is thrilled to announce the launch of Phase 2 of public engagement for the 2026 Rutland Regional Plan. In early September, we encourage you all to start providing feedback!

Phase 2, titled Report Back, invites you to see how your feedback from Phase 1, Learn and Assess, has influenced our draft plan policies. Thanks to the active participation of residents and stakeholders across all 27 towns in the Rutland Region, we've gained key insights on issues such as downtown growth, natural resource protection, affordable housing, childcare facilities, road maintenance, and job creation. Your input is helping to shape a collaborative guide for a healthy, equitable, and resilient region.

Running from September to November 2024, Phase 2 aims to achieve two main goals: 1) gather your reaction to what we learned from you in Phase 1 and 2) seek your thoughts on the plan's draft policies. Our robust Phase 2 engagement strategy includes town board presentations, pop-up events, hybrid feedback sessions, an online survey, and a video presentation to make it easy for you to participate.

Review the draft plan policies and provide your feedback to ensure the plan reflects the community's vision and needs. Your voice is crucial in creating a future that benefits everyone in the Rutland Region. Visit [rutlandrpc.org/plan2026](http://rutlandrpc.org/plan2026) or email us at [plan2026@rutlandrpc.org](mailto:plan2026@rutlandrpc.org) to learn more and share your thoughts. Let's shape the future of our Region together!

**NOW OPEN!!**

**EVERYDAY 7AM- 7PM**

**"YAY!"**

**OUR SWEET LITTLE  
FARMSTAND  
FEATURING  
ORGANIC  
VEGGIES, FLOWERS,  
& OTHER LOCAL  
DELIGHTS**



**STONE'S THROW FARMSTEAD  
120 WILMOUTH HILL ROAD  
SHREWSBURY, VT 05738**

**240-490-0858  
WWW.STONETHROWFARMSTEAD.COM  
STONETHROWFARMSTEAD@GMAIL.COM**

**SEE YOU SOON!**

**~ JESS & CONNOR**





## SHREWSBURY VOLUNTEER FIRE DEPARTMENT

During the past month, the SVFD responded to three incidents. On July 29, a call came in to respond to a motor vehicle accident on Route 103 north of Cuttingsville. A pickup truck struck the concrete barriers on the flood damaged bridge near the Landon residence. This caused the truck to swerve and go over the embankment on the right side of the road where it rolled over and landed among some trees. The driver was able to get out of the vehicle and was apparently uninjured. State police arrived and assisted the SVFD in securing the scene. The department shut down one lane and provided traffic control to maintain a measured flow of vehicles until a flatbed wrecker arrived and was able to remove the crashed truck. Ironically, this accident happened in exactly the same spot as a previous truck/trailer rollover that occurred on July 13. The SVFD advises our readers to be cautious when driving north on Route 103 where the cement barriers tend to narrow the shoulder of the road. A slight distraction could cause your vehicle to glance off the barriers with similar results.

The other two calls were for the investigation of trees down on wires causing arcing of power lines. The first occurred August 10 on Cold River Road, and the next was on August 12 at the junction of Button Hill Road and Spring Lake Road. Both incidents were secured until Green Mountain Power crews arrived to handle the situations. In both incidents, 9-1-1 was called, and the SVFD responded to secure the scenes which were quickly taken care of by the power company. Should you see wires arcing or lines down anywhere in town, immediately call 9-1-1 and report it. Never try to move wires, trees or limbs that are in contact with wires. Stay away! Often the ground can become energized with high voltage. Even the SVFD will not touch them and will usually just block off the vicinity until the trained workers arrive.

In other department news, this summer has been a busy one for the volunteers. Maintenance involving inspections of the trucks, clean ups of the stations and the inspection of equipment was ongoing. An air pack drill was also conducted. Planning sessions with members of the building committee and architects looking into the feasibility of adding a larger bay to the Cuttingsville Station were held. This is a continuous process and the technical details and plans for such a project take a lot of time and preparation. The Cuttingsville Station has served our town for the past 70 years. Certain improvements have to be made as we look to the future of the SVFD. One of the main improvements will be the addition of a larger truck bay in Cuttingsville. We will post additional information regarding this capital improvement as it evolves.

As fall arrives and students return to school, the SVFD asks that drivers use caution and obey speed limits. There are many locations in town where students wait for the school buses and are close to the roads. Care must be taken to keep everyone safe.

With the upcoming Shrewsbury Day parade and festivities, the department looks forward to meeting many of our townspeople and visitors. It will be a great opportunity for everyone to see some of the vehicles, equipment, and the volunteers.

So, until next time, always remember to

**STAY FIRE SAFE.**

*~Submitted by Bob Snarski, SVFD Safety Officer*

### THE SVFD NEEDS YOU!

We need new and younger members. The Shrewsbury Volunteer Fire Department (SVFD) can provide equipment, training, and support. Whether you've had prior experience as a first responder or have no experience at all! We need volunteers. Men or women who would like further information may call Bob Snarski at 492-3505, Barry Griffith at 492-3573, or Jack Perry at 773-3278. No commitment necessary.



#### The Shrewsbury Community Blues Band

Paul Sgalia, Emmett Sirjane, Arron Schneider, Miguel Levy, Marcos Levy, and Dirk Thomas  
Making music at the Shrewsbury Library Haystack Dinner!



**Our little spot Shrewsbury “Center” Cemetery**

The cemetery was officially established in July of 1813, the year of the fever epidemic; however, the site had been used as a burial ground for about fifteen years. This one acre of land was deeded for the cemetery by Stephen Gleason, to be enclosed by a stone wall, with Mr. Gleason retaining the privilege of pasturing his horses, sheep and cattle there. The deed was for as long as “wood grows and water runs.”

In 1813 the illness, called lung fever, which was spread through throughout New England by soldiers returning from the war of 1812, claimed the lives of about thirty people in Shrewsbury. Among the several victims buried in this cemetery are Lemuel White a Revolutionary War soldier and the first settler in Shrewsbury; Phinehas Page who also served during the Revolution; Susannah Knight, wife of Amos Knight another soldier of the Revolution, and Mary Brown, the wife of Reuben Brown who also served in the Revolution. As you walk through the cemetery, you might possibly observe the graves of others who died during the fever epidemic and are buried here.

Men who served in and are buried in this cemetery (that we know) ...

**Revolutionary War**

Nehemiah Smith  
Lemuel White  
Samuel Low  
William Lord  
Amos Knight  
Philemon Adams  
Uriah Cook  
Reuben Brown  
William Russell  
Phineas Page  
Benjamin Needham  
Jonathon Jones

**War of 1812**

Capt. Benjamin  
Needham Jr.

**Mexican War**

Horace Needham

**Civil War**

Lt Henry L. York  
Curran A. Shippee  
KC Flanders  
Horace E.  
Needham  
Benjamin Needham

**World War One**

Elvin Flanagan  
Robert Morse  
Gleason  
Perley J. Smith  
W. W. Clark

**World War Two**

Frederic P. Elwert  
Charles Edward  
LaPoint  
Russell C. Smith  
John Steele

**Korean War**

Thomas W. Smith

**Vietnam War**

Scott Russell  
Smith

Historical notes taken from: “Shrewsbury, Vermont our Town as it was” by Dawn D Hance & notes prepared by Charlie Davis from historical references and visual study of grave markers.

~Submitted by Mary Smith

**COME ONE COME ALL**

**October 5, 2024 ~ 8:30am**

The years have been a bit hard on **Shrewsbury “Center” Cemetery**. Wind and rains of recent storms have done damage to our beautiful stately maple trees which in turn have damaged many of the century old gravestones.

Fortunately, we made the restoration schedule for the VT Old Cemetery Assoc. Mr. Tom Giffin is coming and but we need to provide volunteers, wheelbarrows, shovels, rakes, prybars, tampers, scrap wood, sure-pack, epoxy, D-2 stone cleaner, plastic brushes (no wire), garden sprayers, water, snacks, and lunch.

**Volunteers Needed**

**October 5, 2024 ~ 8:30am**

**RSVP 802-492-2151**



Late September & Early October: It's mating season for the moose, so watch out for them on the roads as they cross for action on the other side!

**Monday at Hannaford**

Lovely strains of violin  
Can be heard from across the parking lot.  
This sweet Romanian couple does their best  
To provide for their family of five.

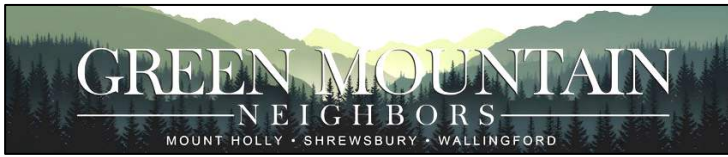
Basic needs must be met  
As they set a donation can down next to some  
panhandlers in the sun  
With sign and fiddle as the lovely sounds  
Help to keep spirit alive.

Ahh, life, such a challenge  
To those who have and, especially, to those who have  
not.  
Immigrants from abroad trusting that this country will  
allow them to thrive.

Hello, Friends, where are you from?

*by Marti Andersen*





Last month I mentioned that we held a Q&A session at the Library to talk about what Green Mountain Neighbors can provide and to help folks sign up to volunteer and/or become members. I think that all would say it was a valuable session. Well, we're going to be holding more of these. In fact, each month for a while anyway, there will be one in the libraries in each of our three towns of Mount Holly, Shrewsbury and Wallingford. Anyone can attend any of the gatherings. The first will be in September: Mount Holly at 1:00pm on Tuesday, Sept 10; Shrewsbury at 3:30pm on Monday, Sept 23; and Wallingford at 11am on Sept 6. There will be others in subsequent months on the second Tuesday (MH), the fourth Monday (Sh) and the first Friday (Wa) of each month. This schedule will be posted on the GMN website

We have also scheduled some walks/light hikes in our towns, led by local experts. The idea is for residents of each town to learn about trails and walks in each of the towns. We think this could be a fun way to get to know members from other towns as well as to discover new trails!

On Monday, July 29, about 15 members and volunteers had the opportunity to pick berries at Sugar Hill Blueberry Farm in East Wallingford at a discount from their regular PYO price. We expect more fun events to be coming. Keep an eye on the GMN website at <https://greenmountainneighbors.org/> for the latest info. Or see the Green Mountain Neighbors Facebook page.

Remember, we do not want to discourage anyone from becoming a member. GMN has a small pool of dollars to subsidize a fee waiver and we recently applied for a grant to create a little larger pool of dollars. Don't be afraid to ask. We are here to help you not to put a greater burden on you. By the way, no fee is required to be a volunteer! And we need both members and volunteers to make this work.

Finally, Green Mountain Neighbors has access to a whole lot of basic home-care equipment. If you need any of this sort of thing it's worth asking. You might be able to save yourself some money by borrowing rather than purchasing. Some items available include:

\* A wide assortment crutches & canes

- \* Walkers with and without seats
- \* Free standing commodes and chairs to go over your own toilet
- \* Rolling tables for bed-ridden family members
- \* Assorted boots and shoes for post-surgical support, including water-proof boots

Be aware that there is no guarantee of the soundness of the equipment nor its sanitation. There is also no instruction provided on use of the items.

If you are interested in any items, please call Jan O'Hara at 802-492-8687 or contact either

Linda Fontana at [shrewsbury@greenmountainneighbors.org](mailto:shrewsbury@greenmountainneighbors.org)  
Sally Deinzer at [sally@greenmountainneighbors.org](mailto:sally@greenmountainneighbors.org)

See our website at <https://greenmountainneighbors.org> or call us at 802-417-2292.

**We're open and ready to serve you!**  
**Contact Us Today!**

~ Submitted by Sally Deinzer

Minka and Linnea's Babysitting

Red Cross Certified  
\$14 an hour

Contact us at 802-492-2017 or 802-492-8830

**Bone Builders**  
9-10am  
Every Tuesday and Thursday  
at the Meeting House on Lottery Road  
Free weights and instruction

Join us to improve your  
Bones, Balance, and Strength

**DIG PRO LLC**

**EARTH MOVING  
AND  
EXCAVATION**

**802.855.1215**



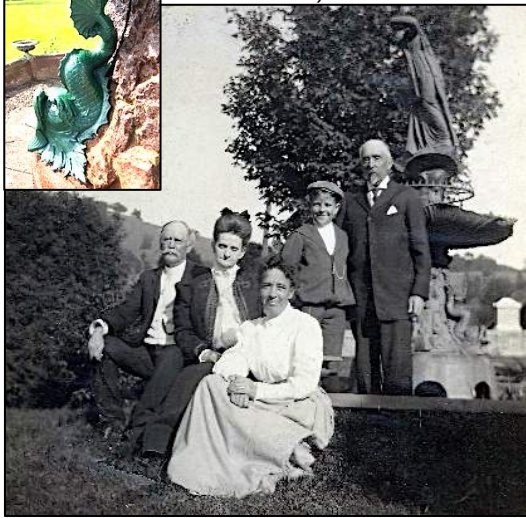
## NEWS FROM LAUREL GLEN ASSOCIATION (LGA)

Detective work continues! Mary Marzec-Gerrior of Proctor joined me in doing research at the Shrewsbury Historical Society in late July. We found notices of Mr. Bowman’s activities in old newspaper clippings – gripping stuff like, “Mr. Bowman had business in Rutland today.” More exciting news to come.



A photo from Kathy Scott (via Ahmet Baycu – Thank You!) shows that the cast iron fish (inset)

that have long occupied the servants’ staircase were indeed once part of the fountain in front of the mansion. The black and white photo includes, at left, a man identified as Mr. Bowman himself in the last year of his life.



Volunteers planted flowers in the fountain pots and rain buckets near the entrance stairs. In cleaning, we found that the marble threshold to the stairs is curved at its edges; it was so overgrown we didn’t realize! From left: Patricia Lambert, Barbara Buck-Cohen, Pam Monder, and Cathy Louttit



More workdays in September; reach out if you can help! We will also need help moving some very heavy items. Let me know if you can help with that, too! [Freddie.monder@gmail.com](mailto:Freddie.monder@gmail.com). Follow us on Facebook : <https://www.facebook.com/share/7xaxtDDBn5AHM9dH/>

“Did you know?” There will be a Flashlight Tour of Laurel Glen Cemetery on Saturday, October 18. Ed Sawyer and Grace Brigham are busy organizing a fun walk through the history of our town. More details will follow in the October edition of the Times.

We are a 501 c-3 organization; donations can be made to Friends of Bowman Mansion and sent to 333 Town Hill Rd, Shrewsbury, VT 05738. ~Submitted by Pam Monder



### Handsome New Moose!

This handsome moose was created by Grace Brigham, Chet Brigham, Liesbeth van der Heijden, and multiple assistants. Watch for him on Shrewsbury Day!

### Calling All Photographers!

The Shrewsbury Board of Auditors is soliciting recent photographs of Shrewsbury life for the town’s 2024 Annual Report.



We particularly value photos of Town officers and Town Events (such as Shrewsbury Day, concerts, school activities, etc.), but also welcome scenic pictures from in and around Shrewsbury.

Submit your picture as a jpeg file and email it to [auditshrewsbury@gmail.com](mailto:auditshrewsbury@gmail.com) no later than January 1, 2025. Don’t forget to provide captions identifying people, places, and events. Also, be sure to identify the photographer so we can give proper credit! The Board of Auditors will review the photos and select them based on applicability and space availability. Thank you for your help with our Town Report!

Shrewsbury Board of Auditors





Library News Submitted by Joan Aleshire

**LIBRARY & FOOD SHELF HOURS**

Monday 10 am to 12 pm

Tuesday 7 pm to 9 pm

Wednesday 10 am to 5 pm & 7 pm to 9 pm

Thursday 7 pm to 9 pm

Friday 10 am to 12 pm

Saturday 10 am to 12 pm

To search the Library Catalog, put a hold on a book or DVD in our collection, and get the latest Library news, please visit our website: [www.shrewsburylibrary.org](http://www.shrewsburylibrary.org). To order or suggest a book to add to our collection, please contact Donna Swartz: [donnaswartz44@aol.com](mailto:donnaswartz44@aol.com) (for children's and Young Adult books) or Joan Aleshire [joanaleshire@vermontel.net](mailto:joanaleshire@vermontel.net) (for adult fiction and non-fiction books). We can order books on Inter-Library Loan from other libraries, or consider buying them.

MANY THANKS to everyone who helped make the Taco Dinner and Street Dance a wonderful event: MARGE, who solicited gift cards; DONNA, our master mind and chef; LISA, who helped set up beforehand; TRISH, GAIL, CABOT, SUZAN, MICHELLE, and BEN, who variously helped with baking & food donations, food prep, dinner set-up, and clean up; MARCOS & The COMMUNITY BAND: DIRK, PAUL, MIGUEL, AARON S, and EMMETT, for the terrific music! Great food, friends, music, and even weather: it couldn't have been a better evening!

We still have an OPENING on our BOARD OF TRUSTEES! Please contact a member of our Nominating Committee: GAIL HARTIGAN: [gailhartigan382@gmail.com](mailto:gailhartigan382@gmail.com); ED SAWYER: [esawyer151@gmail.com](mailto:esawyer151@gmail.com); or DIRK THOMAS: [dsthomas46@gmail.com](mailto:dsthomas46@gmail.com) if you're interested. Trustees meet on the second Tuesday of every month at 7pm.; staff twice a month, serve on a committee, and help with events. It's a great way to meet neighbors and help our small organization!

**Coming Events:**

Friday, September 20 @ 7pm: Shrewsbury Community Church: BECKI BATES will talk about her recent visit to Israel, meeting with Israeli and Palestinian advocates for peace. Special thanks to Julanne Sharrow, Sue Kelley, and the Shrewsbury Community Church for welcoming this event.

Saturday, September 21 @ 9am to 2pm: LIBRARY BOOK SALE! We welcome books, DVDs and CDs in good condition. Please wait until SEPTEMBER 2 to donate books, and please see our guidelines in a separate article in this issue!

Sunday, September 22 @ 2pm: TECH OPEN HOUSE! Members of the Library Communications Committee will demonstrate the Library's new technologies. Please see the article in this issue of the Times.

**Continuing Programs:**

Sunday, August 25 @ 7pm: SCIENCE BOOK CLUB: *Knife's Edge* by Carl Zimmer.

Sunday, September 1 @ 4pm: WRITERS' GROUP. NOTE NEW DATE: 1st SUNDAY of the month. Please contact Penelope Weiss: [pw9@earthlink.com](mailto:pw9@earthlink.com) or Joan Aleshire: [joanaleshire@vermontel.net](mailto:joanaleshire@vermontel.net) if you're interested.

Sunday, September 22 @ 4pm: SCIENCE BOOK CLUB: TBA.

Sunday, October 20 @ 4 pm: (Skipping September!) FAMOUS BOOKS BOOK CLUB: 2nd session on James by Percival Everett and *The Adventures of Huckleberry Finn*. Please contact Joan if you need a copy of either or both books, or the Norton Critical Edition of the Twain.

**New Books include:**

- *Road to Surrender:* Three Men and the Countdown to the End of World War II by Evan Thomas: A detailed account of the decision to drop the atom bomb.
- *A House Restored:* The Tragedies and Triumphs of Saving a New England Colonial by Lee McColgan.
- *Agony Hill:* A new mystery novel by Vermont writer Sarah Stewart Taylor.
- *You Like It Darker:* Stories by Stephen King.
- *Sandwich:* An entertaining novel set on Cape Cod, by Catherine Newman.
- *The God of the Woods:* A gripping novel about a disappearance at a summer camp, by Liz Moore.

**Shrewsbury Library  
Tech Open House  
Sunday, September 22 at 2:00pm**

- Have you ever wondered how to access the library's digital collection of e-books and audio books?
- Are you interested in learning how to search the library's collection for books, CDs, and DVDs – either from home or in the library?
- Would you like to learn how to operate the assistive devices available at the library?
- Or would you just like to learn more about the Shrewsbury Library and sign up for a library card?

If you answered "yes" to any of these questions, don't miss the upcoming our Tech Open House!

Library trustees will be on hand to introduce you to the library's various "tech" features and teach you how to access the many resources beyond what is on the library's shelves. Don't miss this opportunity to learn how to get the most out of what the Shrewsbury Library has to offer!





### BOOK REVIEWS

- \*\*\*\*\**Fantastic*
- \*\*\*\**Compelling page turner*
- \*\*\**Enjoyable*
- \*\**Just O.K.*
- \**Not recommended*

#### A Walk in the Park:

*The True Story of a Spectacular Misadventure  
in the Grand Canyon*  
by Kevin Fedarko

★★★★★

Two friends decide to take on the mighty landscape of one of earth's most spectacular places, the Grand Canyon, by hiking through it from one end to the other. Kevin Fedarko is also the author of *The Emerald Mile*, and his best mate, Pete, is a photographer and filmmaker. You will be astounded by their innocence—or complete stupidity in their lack of preparedness for such an endeavor. They meet remarkable and resourceful people on their journey who save them from themselves. Despite this, the pair are lucky to leave with their lives. The book offers great information about the important relationships of people with the canyon, and especially the spiritual ties enjoyed by the native people. Sadly, the battle to save this magical landscape from greedy developers remains a threat. So far, so good. Often funny, always intriguing, I give this book the highest mark, 5 stars. ~Review by Marilyn Dalick

Find us at: The Olde Barnayrd  
5444 VT Route 103, Cuttingsville VT 05738



- Local & Handmade Goods
- Maple Syrup
- Craft Food & Beer
- Home Decor

**Summer sales going on through till  
September!**

**Up to 50% off selected items!**

**Extended hours begin  
Monday, September 23rd.**

**Open all week long for the Fall & Winter: 11am-6pm  
Monday to Friday, 11am-7pm Saturday & Sunday.**

**See us at the Best of Vermont Summer Festival in  
Ludlow Sat, 8/24 & Sun, 8/25. Store will remain open  
regular hours during the festival.**

Contact Us: (516) 522-4174 - hello@wallyscorner.com

Shop Online: www.wallyscorner.com

Find us on social media under @wallyscorner

**Shop Small, Buy Local**

## FREE TO A GOOD HOME Come and Take It/Them Away!

Magic Chef 3.1 cu. ft. Refrigerator with separate freezer compartment. Stainless steel doors. 33.5" H x 18.7" W x 20.3" D.

STIHL 017 Chain Saw. Starts but needs cleaning, tune up, and chain sharpening. Carrying case included.

Wooden Coffee Table (maple like finish) with 3 storage drawers, open below. Fair condition 18" H x 46" W x 17.5" D.

Wooden Bookshelf (walnut like finish) Four shelves. Fair condition. 60"H x 30" W x 12" D.

**Contact Rich at 802-492-2255**



## Batty for Bats!

**Shrewsbury Conservation Commission  
Walk and Talk**

**September 7 ~ 10:00am – noon**

Many years ago, we had former resident and now retired Fish and Wildlife biologist Scott Darling talk about the little brown bat and white nose syndrome that threatens their existence.

Time to find out how our bat friends are doing these days with Travis Hart, current biologist with Fish and Wildlife in Rutland County! Travis began working with Fish and Wildlife seasonally in 2016 and joined the department full time in 2021. He has a B.S. in natural resources from University of Vermont. Travis provides technical assistance to private landowners in southern Vermont. He assists with planning and implementation of NRCS Wildlife and Forestry programs on private lands in Rutland, Bennington and Addison counties. He also manages various Wildlife Management Areas in the Rutland District.

Come ready to explore the trails and woods in Plymbsbury on September 7 from 10:00am – noon. Travis will talk about our forest bat species, habitat that supports these bats and some things people can do at their own homes to try and improve habitat for bats. The Plymbsbury area is also near a hibernacula. SCC member Chris Clarke will share a handout on making your own bat house.

Meet at the parking area off of Old Plymouth Road. Wear clothing appropriate for the weather and bring water, and binoculars if you like. Enjoy a hike with shared knowledge with the SCC! Please contact Weezie at shrewsburyvtconservation@gmail.com to let her know if you plan on attending this event.

# Shrewsbury Historical Society

www.shrewsburyhistoricalsociety.com

## Shrewsbury Day 2024

The Shrewsbury Historical Society invites you and your family to this year's Shrewsbury Day at the Center. This is a day whereby we all get to celebrate our town. Mark your calendars for Sunday, September 15, (rain date on the 22). The parade starts at 11am. Feel festive? Wear something green in celebration of Mountain School's 50th birthday., which is this year's theme. Lunch will be at noon. The committee has been busy planning all this fun for Shrewsbury folks, young and old.

## The SHS Museum is open for all

The museum is open on Sundays only from 1 to 3pm and our final day will be October 27th. Be sure to come by for a treat. The new exhibit has attracted many and we are especially happy that the families of the 3 men featured, B-J Stewart, Al Ridlon, Sr., and Larry Carrara have been by to see it. Be sure to ask the museum volunteer to put the video on showing Carrara at his program upstairs in the library. It features Larry sitting next to a video screen commenting on the video of his world known experience with managing a bull moose visit to his heifer Jessica and the various news broadcasts showing his story. Children especially love to see the antlers of a moose also on exhibit.

Have you noticed the finial atop the bell tower of the museum? It had been blown down more than a few years ago and when the repair job on the bell tower was finished, it was replaced.

## The sound of silence

This time of the year it is hard for me to be reminded of the SHS famous games once held in the 80s and 90s on the Butler's lawns across the road. The green expanse of grass once held the lovely old Shrewsbury Inn (which had been built prior to 1846) where there was mirth and comradeship within its walls and spilling out onto the games outside. Dressed in costume, the Lord of the Manor, Don Butler would referee the teams and very seriously, too.



*SHS hosts an afternoon Croquet Contest on the lawns of Shrewsbury Inn, Cuttingsville, September of 1995*

Meanwhile Lois, the Lady of the House, together with help would prepare a splendid table with tiny sandwiches and accoutrements brought in by members, such as homemade pickle relish prepared by Con Winkler, with one jar without mustard seed for George Erb who was allergic to them. One year we organized a contest with the Mt. Holly Historical Society

and it made the Rutland Herald. Prizes were given to the winners and all repaired to the ivy clad outside porch for light refreshments. Perhaps one day we may have help and enjoy this sport all over again.

## Dues for this year

Only dues paid members for this current year will be able to vote for new officers at our last meeting in October. It is not too late to catch up. The dues remain the same as always: Single \$10, Family \$15, Contributing \$30, and Life (single or couple) \$125. Please send to Treasurer Julianne Sharrow, Lincoln Hill Road, Shrewsbury, VT 05738, or at the meeting.

*~Submitted by Ruth Winkler*

## Israel/Palestine Talk

Presented by Becki Bates  
and sponsored by the Shrewsbury Library

**Friday, September 20**  
**7pm**

**Shrewsbury Meeting House**  
88 Lottery Road, Shrewsbury, VT

Over the past months, I had been feeling despair listening to the news coming out of Israel/Palestine. First, the horrors of October 7. Then, the horrors of the war in Gaza. I was feeling deep disappointment with a country where I have strong personal ties. I thought, if we, as Jews, after 2000 years of living as an oppressed people, culminating in mass genocide, can't do better than this, then what hope is there for humankind?

So, I decided to go to Israel. Of course, to visit friends and relatives, to go swimming in the Mediterranean and the Jordan River, to eat Felafel and Halwah straight from the Shuk in Jerusalem. But mostly for a one-week Study Tour with New Israel Fund.

The New Israel Fund supports initiatives for peace, coexistence, and social justice. Our tour included, among other things, visits to East Jerusalem, the West Bank, Bedouin Villages, and Nazareth. We had a chance to hear from Palestinian and Jewish activists, people who lost their parents on October 7, physicians who have worked in Gaza, soldiers who have served in the Occupied Territories, even an unfortunate encounter with West Bank Settlers.

In my talk on September 20, I will try to give a quick history of the Arab and Jewish experience over the past 2000 years, an explanation of the logistics of Israeli politics, and a description of a vision for a better future for all. *~Becki Bates*

## PARADE LINE-UP

- Shrewsbury Mountain School kids meet in front of DJ Brett by 10:30. SMS kids will Move as a group to Russellville Road with adults to Line up for the Parade.
- All other groups meet on Russellville Rd by 10:15am to Lineup across from your sign.
- Please keep one side of road free for cars traveling to their place in the line-up.
- Any questions please contact Betsy Jesser at 492-9117 or benbeano@vermontel.net

## PARKING

Park early. Parade route will be closed to all traffic at 10:45am! Follow parking sign arrows. And, please park only one side of the road.

## 10:00 - 11:00am – MUSIC

DJ Brett Myhre in front of Maple Crest Farms  
(No thru traffic after 10:45am)  
*Park early and let DJ Brett entertain you!*

## 11:00am – PARADE

Reveille will be played by Bob Snarski  
to start the parade.  
*and*

Shrewsbury Singers will sing in front of Maple Crest

Parade starts with the  
Shrewsbury Mountain School Celebration  
at 11am at the top of Russellville Road and turns left  
onto Lincoln Hill Road and proceeds thru Shrewsbury  
Center ending up behind the Meeting House—a long,  
short parade featuring: Shrewsbury Veterans,  
Shrewsbury Fire Department, antique cars, local  
businesses and organizations, and Shriners will bring  
their Legion of Honor, Patrol and Drum,  
Bessie the Camel, and much more!

## 50/50 Raffle!

(You do not have to be present to win!)

## KIDS' EVENTS

On the top of the hill by the garage.  
Tattoos, Rainbow Hair Coloring Sticks, Razzle Dazzle  
Nail Painting. Also, Giant Jenga, Connect 4, Cornhole,  
Ring Toss, Pizza Box Relay Shuffle, Bean Bag Toss

# SHREWSBURY DAY

## Sunday, September 15, 2024

*(Rain date Sunday, September 22)*

Wear **GREEN**  
in honor of the  
Shrewsbury Mountain School  
50<sup>th</sup> Anniversary

## 12:30pm – BARBECUE

*(By Donation)*

Hamburgers and Hot Dogs  
Baked Beans  
Salad

Lemonade, Chips, Maple Popcorn and Ice Cream  
*(Note: We will not be serving before 12:30pm)*

## LUNCH TIME ENTERTAINMENT

The Terry Martin Shrewsberrie Pick Up Band

## 12:30 - 3pm: ENTERTAINMENT

DJ Brett Myhre –Bring your dancing shoes!

## 1:30pm – KID'S EVENTS RESUME

## EXHIBITS

Follow signs and use front entrance to the Meeting  
House to view exhibits of the  
Shrewsbury Mountain School 50<sup>th</sup> Anniversary

## Fun For Everyone!

All festivities take place outdoors at the Meeting House  
following the Parade.  
The Meeting House will be closed to the public.

**Bring a blanket or lawn chairs to sit on**

Please  
**No Dogs or Horses**



SEE YOU AT ★

# Shrewsbury Day

## 2024

★ ★ ★ SEPT. 15 RAIN DATE SEPT. 22

10:30 AM - 3:00 PM

PARADE! GAMES CREATIVE PROJECTS  
EXHIBITS BBQ! MUSIC! SURPRIZES



### CELEBRATING OUR COMMUNITY!



## The Shrewsbury Community Church



Compiled by Sue Ransom-Kelley



Pastor Karen Braeutigam at Northam Church

**We have enjoyed worship services at the Northam Church all summer! On September 1 we move our Sunday Services back to the Shrewsbury Center Church which is on the second floor of the Meeting House. All are welcome to visit us any Sunday!**

## Shrewsbury Community Church Calendar

- Sunday Aug 25, 6:00 PM- Vespers Service at the Northam Church led by Pastor Karen Braeutigam (No morning worship service).
- Tuesday Aug 27, 12 noon. Prayer Shawl Meeting in the Center Church Meeting Room upstairs at the Meeting House. Knit or crochet shawls, lap blankets, or baby blankets to give to those in need of comfort or celebration. Bring a bag lunch if you would like to. Beverages and dessert provided. Don't know how to knit or crochet? Come and we will teach you! Call Roxanne with questions 802-492-3675 or 802-770-3938.
- Sunday Sept 1, 10:30 Worship Service and Holy Communion led by Pastor Karen Braeutigam. Center Church.
- Sunday Sept 8, 10:30 Fun Day Program for Kids and Worship Service led by Pastor Karen Braeutigam. Center Church.
- Sunday Sept 15, No worship Service. Come and Celebrate Shrewsbury Day!
- Sunday Sept 22, Fun Day Program for Kids and Worship Service led by Pastor Karen Braeutigam. Center Church.
- Tuesday Sept 24 12 noon. Prayer Shawl Meeting in the Center Church Meeting Room upstairs at the Meeting House.
- Sunday Sept 29, Fun Day Program for Kids and Worship Service led by Pastor Karen Braeutigam. Center Church.

## Community Food Shelf

Free Community Food Shelf at the Library in the front entry way. Those in need are welcome to help themselves any time the Library entryway is open. Limited hours are: Mon 10am-12noon; Tues 7-9pm; Wed 10am-5pm and 7-9pm; Thurs 7-9pm; Fri 10am-12noon; and, Sat 10am-12noon.

We have our additional Summer Food Shelf on the side porch at Pierces Store in North Shrewsbury. Those in need are welcome to help themselves.

**Food Delivery and Assistance** If you are unable to get to the Food Shelf at the library in Shrewsbury, we will deliver groceries to you. If you need items which are not available on the shelf we can provide grocery gift cards. Call Karen at 802-558-5991 or Sue at 802-779-4825 or 802-492-3738.

## Community Needs

- Wedding, Funeral or Memorial Service Requests: Contact Donna Smith 802-492-3367; or Sue Kelley 802-492-3738, 802-779-4825
- Community Helping Hand Requests: Contact Donna Smith 802-492-3367; Sue Kelley 802-779-4825, 802-492-3738; or Karen Lorentz 802-558-5991. Shrewsbury residents experiencing financial hardship. Assistance can be given for basic needs (food, heating, gasoline, etc). If you or a neighbor are in need, please let us know!
- Pastoral Care, Home, Hospital Visitation, Outreach Requests: Contact Roxanne Ramah 802-492-3675 or Ruth Kinne 802- 775-5318.



**The Sunday Fun Day Program for kids will resume on Sunday, September 8, from 10:30-11:30am at the Shrewsbury Center Church in the children's room upstairs at the Meeting House.**

All are welcome to join us and we welcome parent participation. We gather children at the church. We participate in crafts, stories, and sharing. We have an average of six children weekly with others joining us now and then. We participate in supporting community and world service projects. We often use recycled materials in our craft projects. Soon we will be making wind chimes! Please join us! Call Cortney 802-683-7852, Anissa 802-779-2248, or Lynette 802-683-0631 if you have questions.



# Spring Lake Ranch

therapeutic community

## Get to Know Spring Lake Ranch: Farm Crew

Spring Lake Ranch provides our neighbors in Shrewsbury with a peek at day-to-day operations with our series, "Get to Know Spring Lake Ranch".

Farm Crew has been busy preparing for and welcoming two litters of piglets born in May and June, as well as eight healthy calves (so far!) born in July and August. We're also happily caring for two sows, one boar, 29 cows, 200 chickens, and three mini-donkeys.

In addition to our animals, Farm Crew runs our mycology program, growing gourmet mushrooms that provide vegetarian and vegan Ranchers with delicious alternatives at mealtime (meat-eaters enjoy them too). It's been a summer packed full of new animals and new skills to learn.

We are looking forward to a few more calves on the way. The residents are also excited to begin moving the older piglets and their mothers out to pasture, where they'll have more room to run around. Caring for and hanging out with the piglets has been a resident favorite for the Farm Crew for some time now. There's nothing quite like cuddling a baby piglet in your lap and hypnotizing it with some good belly rubs to brighten your day.

Farm Crew is run by Carl Mancivalano and his daughter Olivia. With their compassion and knowledge, they instill a deep respect for our animals, our food systems, and our place in the community. Farm Crew donates eggs and meat to several community organizations combatting hunger.



"I really like taking care of the animals to help make their lives better," says a current resident crew member.

Says another resident, "Being on Farm means

to wake up with a purpose. The animals teach you a lot about yourself and what it means to be alive and coexist."

Working with animals, especially the babies, is something that all the folks at Spring Lake Ranch enjoy, though Farm Crew is lucky enough to get a front-row seat five days a week (and weekends, too, for residents who sign up for those extra shifts). It's not just about the animals. They also enjoy the camaraderie between crew members.

"I love the consistency and variety of Farm Crew," says a resident. "I also really like the group we have on Farm Crew right now, both staff and residents. It makes tasks that seem daunting at first a lot easier to handle, especially once you start digging into them."

Another resident agrees, saying, "I also enjoy working with the other residents each day and becoming closer with them. Being on crew with them every day really helps me work through some of my own challenges."

~Submitted by Alex Schoch and Anna Sutton

## Small Farm Flavor & Quality!



VT MAPLE SYRUP & GRASSFED BEEF

- |                         |                 |                       |
|-------------------------|-----------------|-----------------------|
| Maple Candies           | Locally Sourced | Ground Beef           |
| Maple Cookies           | Pork (cuts)     | Grilling Steaks       |
| Maple Spices, Marinades | Chicken (cuts)  | Ribs, Roasts Briskets |
| Sugar and Snacks        | & Eggs          | Sausages & More       |

Gift bags of Vermont Goodies and Meat Freezer Boxes Available

**OPEN: WED THRU MON 10 AM - 5 PM**

2450 Lincoln Hill Road, Shrewsbury VT. 05738

SmithMapleCrestFarm.com 802-492-2151 maplecrest.info@gmail.com

**We ship syrup all over the USA**

From: Rutland: Left off VT RT 103 just 2.5 miles - on the right



From: Cuttingsville: Just 2.1 miles up Town Hill Rd, right on Lincoln Hill Red Barn on right

# SHREWSBURY SINGERS

present

Singing on a

Sunday Afternoon

Sharing songs we love to sing,  
old & new, from near & far

~~~~~

September 29th @ 3:00pm

Shrewsbury Meeting House

~ Free Will Offering ~

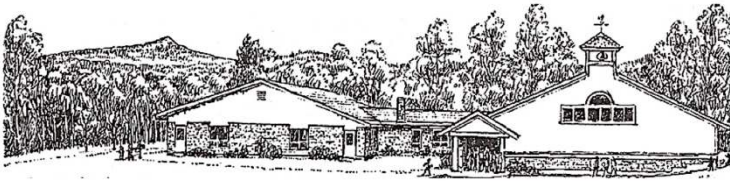
Collecting **FOOD ITEMS** for the Shrewsbury Food Shelf

~~~~~

Information: Licia Gambino

(802) 492-3792 [hamgam@vermontel.net](mailto:hamgam@vermontel.net)





## SHREWSBURY MOUNTAIN SCHOOL

I am SO EXCITED for the start of the school year! There are only a few days left and we will be seeing all our students' smiling faces and see how much they have grown over the summer! It is going to be a GREAT year!

### Important Dates:

- ◇ Aug 28: First day of School!
- ◇ Aug 28: After School Program Begins
- ◇ Sept 2: Labor Day - No School
- ◇ Sept 19: SMS Open House: PTO Pizza Potluck at 6:00pm, Back to School Night 6:30-7:30pm
- ◇ Oct 1: Picture Day!

First Day Share! One of our favorite parts of the first day of school is seeing the big smiles, favorite outfits and summer growth of each kiddo as they walk into our school. In order to share that joy this year, I am asking any of you who would like to take a first day of school picture of your child(ren) and email it to me. I will share pictures on our website and Facebook page so we can all celebrate together.

### Information Update:

- Our school families have received a letter from their classroom teacher, a school district calendar and a letter from me in the mail!
- After School Program Registration:  
<https://sites.google.com/millriverschools.org/afterschoolprograms/shrewsbury-after-school-program?authuser=0>
- Fall Sports Registration:  
<https://app.formreleaf.com/organizations/mill-river-union-high-school/>
- Specials Schedule:
  - Physical Education on Mondays (wear sneakers!)
  - Music and Chorus on Tuesdays
  - Library, Band Class and Band Lessons on Wednesdays (bring your instrument!)
  - Art and Band Lessons on Thursdays (bring your instrument!)
  - Health and Physical Education on Fridays (wear sneakers!)

Support our School! We need volunteers to help with our Four Winds Program, our Winter Sports Program and our PTO! If you are able to volunteer, please send me an email or call the school. We would love to have you and the students would greatly appreciate your support!

Work for MRUUSD! We are in need of a school counselor, speech and language pathologist, para educator and substitutes. Please contact me for more information or visit [www.schoolspring.com](http://www.schoolspring.com)

Coming soon: Student/Family Handbook, Bus Schedule, Lunch Menu

If you have any questions or concerns, please contact me at 802-786-3995 or at [kcimonetti@millriverschools.org](mailto:kcimonetti@millriverschools.org).

I look forward to seeing everyone soon!

*Submitted by Kristin Cimonetti, Principal*

# RIVERWOOD

LAWNCARE, LLC

FULLY INSURED

## FALL CLEAN UP TIME!

FREE ESTIMATES



**Waist deep in autumn leaves???**

**The Ventrac power blower**

**and power broom make for fast cleanup!!**

**Field growth high???** Let us help with our

**Ventrac tough cut/brush hog service!!**

**Heavy rains damage your driveway???**

**Ventrac Power Rake regrades gravel driveways.**

## 802.770.0433

[riverwoodlawncare@gmail.com](mailto:riverwoodlawncare@gmail.com)

Mount Holly, VT



### TREE WORKS

Fully Insured • Tree Removal • Pruning

**Joshua Bickford**

802.855.3216

[joshfbickford@gmail.com](mailto:joshfbickford@gmail.com)

**SMITH**



2450 Lincoln Hill Rd.  
Shrewsbury Vt 05738

802-492-2151

**SAMPLE Our Vermont Maple Syrup**

**SHOP Our Farm Store For Maple Candies, Treats and Dressings**

**Bring a cooler, STOCK up on our grass-fed finished beef**

**Local Pork, Chicken and Eggs**

**6TH GENERATION SMALL FARM**

**OPEN Wednesday-Monday 10am-5pm**



## LAND MANAGEMENT: “MESSY IS GOOD!”

“Messy is Good” was the takeaway message from the recent walk and talk at a property on Upper Cold River Road led by private lands habitat biologist Andrea Shortsleeve of the Vermont Department of Fish & Wildlife. On July 20, a dozen Shrewsbury landowners gathered to learn about land management practices that enhance various wildlife habitats. As the group wound its way around the woods on a series of trails, Andrea explained that land development, invasive species, and climate change have altered forests in Vermont and impacted ecosystems and wildlife which previously thrived in the state. However, she emphasized that there are land management practices that can encourage valuable tree species like oak, maple, birch, and other types of beneficial vegetation to mount a comeback.

Andrea noted that simple practices, like leaving downed trees in place and removing invasive plants, can have a significant and lasting impact on the health of the forest and its inhabitants. Invasive plants crowd out the native pollinators that we want to encourage, such as milkweed, steeplebush, jewelweed, and goldenrod. The exposed root system of fallen trees (aka tip ups) can become a source of food and shelter for many creatures, like the winter wren, which uses these structures as nest sites. I was excited to learn this because I often hear a winter wren near a tip up on my property! Also, rotting logs left in place on the forest floor are a rich source of nutrients for mosses, fungi, and saplings, while also serving as nest sites for insects that in turn are a food source for a host of other animals. The clutter left from a fallen tree can protect hardwood saplings from deer browsing, a common issue in our forests in Vermont.

Diversity of plant life in the understory of your forest will support a greater variety of bird species as these trees develop. Andrea emphasized that not clearing downed or dead trees and leaving the landscape “messy” is an easy and effective way for landowners to encourage many wildlife species to flourish. Mother nature does a wonderful job on her own, so doing nothing is a great way to manage our forest. Well, that sounds easy!

There are, however, some active management strategies that we can use to help beyond the good work that nature is already doing. Mast trees provide the nuts and seeds that wildlife need to prepare for winter. Vermont’s important mast trees include beech, oak, and hickories. We can help these trees thrive by performing what is called a mast tree release. This means that nearby competing trees are removed to allow more sunlight. (Leave them on the ground when you take them down!) Mast production increases, benefiting bear, turkeys, grouse, fisher, blue jays, woodpeckers and many more!

The group learned that maintaining buffer areas between woodlands and developed areas is another technique to help wildlife access food and water without being exposed to increased predation. As an example, landowners might forego regular mowing directly to the edges of ponds, brooks, and forested areas, and instead leave a buffer of un-mowed vegetation around watercourses and alongside the edges of the woods. Andrea noted that in areas where native vegetation is allowed to grow unfettered, songbirds have returned to nest after lengthy absences.

How diverse is the “mess” in your forest? Examine the canopy, midstory, and forest floor for both live and dead material. Do you see a variety of soft and hardwoods? Are there important mast trees that can be released? Can you reduce competition or protect certain saplings to support a greater variety of trees? Do you have dead snags, which are important nesting areas for woodpeckers, squirrels, bats, and cavity nesting birds? A healthy understory provides flowers for pollinators, food for wildlife, and contains stumps, rotting tree limbs, and leaves for many small mammals, amphibians, and insects. What do you see on your forest floor?

How do I learn more, you ask? Check out “Wildlife Habitat Management - A Landowner's Guide” from the Vermont Fish and Wildlife Department linked here:

<https://vtfishandwildlife.com/learn-more/landowner-resources/wildlife-habitat-management-a-landowners-guide>.

Visit Vermont Coverts <https://vtcoverts.org/index.html> and maybe even attend their 3-day training workshop coming up September 13 through 15, 2024. Contact a local forester and invite them to walk your land with you. Let’s protect our forests so they can continue to protect us.

*Article by Michelle Greene and Diane Jacobsen  
Photo by Tim Stout*



**PVF Services LLC**  
Excavation, Trucking, driveway repair, site prep, building removal, brush grinding and much more!

|                      |                        |
|----------------------|------------------------|
| <b>Neal and Chad</b> | 1368 Lincoln Hill      |
| Cell 802 236 8105    | Shrewsbury Vt, 05738   |
| Office 802 492 3364  | sharrowmaple@gmail.com |





Gould Brook Watershed which extends from Shrewsbury Peak south to Upper Cold River Rd. (including Jockey Hill Farm)

### The Natural Climate Solution Right in Our Backyard

As our climate continues to change at an increasing rate, a common refrain from many of us is “what more can we do to help mitigate climate change. Purchasing electric vehicles, installing photovoltaics and battery storage, weatherizing our homes and carpooling are just a few of the actions we can take. The list of actions is extensive but a climate mitigation tool we may not often think about is our forests which absorb carbon and then store it for many decades.

We have a veritable carbon sequestration (absorption) and storage machine right in our backyard. The above two photos demonstrate how significant this machine is. The photo on the left shows this watershed in the winter with no leaves on the trees. No leaves mean minimal sequestration from the hardwoods. Now look at the photo on the right with a thick canopy of leaves. From winter to late spring, the entire watershed of 2,300 acres transitions to an enormous carbon sink, an area that absorbs and stores massive amount of carbon dioxide. The above watershed is estimated to absorb roughly 3,000 metric tons of carbon dioxide every year, the equivalent of the emissions from 630 cars. Moreover, those trees store a total of roughly 400,000 tons of carbon dioxide, or the equivalent of emissions from 85,000 cars. This carbon is locked in the trees and soils for decades, in some cases centuries. As a result, this forest plays a critical role in regulating the amount of carbon dioxide in the atmosphere and thus mitigating climate change.

What can we do to maximize the carbon dioxide that's absorbed by our forests? The easy answer is to be thoughtful and intentional with our actions, stewardship and how we live on the planet. The rates of sequestration and storage are not guaranteed in the future as our climate changes. We need to figure out how best to keep forests as forests and steward them into an uncertain future.

- Source: Kosiba, AM. 2021. Trees, Carbon, and Climate Change. Vermont Department of Forests, Parks and Recreation.
- An excellent resource on forest carbon is *A Guide to Northeast Forest Carbon* prepared by The Securing Northeast Forest Carbon Program. 2024
- Note: All numbers above are rough estimates and not actual measurements.

~Article by Tim Stout

## BRANCH BROOK EXCAVATING LLC

Driveways / Harley Raking / Ditches and Drains /  
Land Clearing and Reclaiming / Stump Removal /  
Retaining Walls; New and Old /Ponds/Power, Gas,  
and Water Line Burial/ General Dirt Work



Benjamin Turco

1269 Branch Brook rd

Mount Holly, VT 05758

Phone: (802)770-8964

[branchbrookexcavating@gmail.com](mailto:branchbrookexcavating@gmail.com)



**Discover horses  
from the ground up!**

**Jennifer McDermott**

Balanced Seat for all Disciplines

Centered Riding, Instructor

Therapeutic Riding

PATH, Int'l, CTRI & ESMHL

&

Experience the deep connection  
of working at liberty!

Over 35 years of experience.

203 434 9505

[jamequine.com](http://jamequine.com)



# Thrive Center

OF THE GREEN MOUNTAINS

Chiropractic Care  
Applied Kinesiology  
Therapeutic Massage/Bodywork  
Holistic Health Education  
Nutritional Supplements  
Coaching • Worksite Wellness

**Joseph P. Donohue, DC**  
**Lisa Marie Donohue, MA, LMT**  
*Serving the Community with Excellence  
and Compassion Since 2000*

**68 South Main St, Wallingford, VT**  
**802.446.2499 • [instagram.com/thrivecentervt](https://www.instagram.com/thrivecentervt)**



## THE NEW LEARNING PROJECT

CHOOSING TO EXPERIENCE OUR POTENTIAL

**MUSIC LESSONS -- Guitar, Piano, and more**  
**RED CROSS COURSES -- First Aid, CPR, Lifeguarding**  
**SWIMMING INSTRUCTION**  
(More services at website)

**STUDIO IN CUTTINGSVILLE VT**  
[www.TheNewLearningProject.com](http://www.TheNewLearningProject.com)  
[TheNewLearningProject@gmail.com](mailto:TheNewLearningProject@gmail.com)  
802.492.3208

**Marcos Levy**  
Instructor with over 30 years  
of Experience



**Pierces Store 3<sup>rd</sup> Annual  
Chili Cookoff  
October 5, 2024  
5:30PM until 7:30PM**



**At Pierce's Store  
2658 Northam Road  
Shrewsbury, Vermont**

**Chefs and Tasters Welcome!!!**

Chefs – Your fantastic Chili could be the winner!  
All varieties of Chili are welcome!  
Entry Fee – \$10.00 per Chili

To get Contest rules and registration, you can:  
Visit Pierce's Store

Web: <http://www.piercesstore.com/2024-events.html>  
Or, request by e-mail to: [Pierceschilicookoff@gmail.com](mailto:Pierceschilicookoff@gmail.com)

Tasters – You will be the judges!!!  
Taste the wonderful variety of chilis and vote for your favorite!  
Entry Fee - \$10.00

**Prizes – Bragging Rights, plus:**  
**1<sup>st</sup> Place Prize - \$25 Pierce's Store Gift Certificate**  
**2<sup>nd</sup> Place Prize - \$15 Pierce's Store Gift Certificate**  
**3<sup>rd</sup> Place prize - \$10 Pierce's Store Gift Certificate**

**Pierce's Store will be selling soft drinks, beer, and wine**  
**This event is a fund-raiser for the Shrewsbury Co-Op at Pierce's Store**



Day 1

Day 2

Day 3

Day 4

Day 5

Day 6

### Shaggy Ink Cap Mushroom

This mushroom quickly turns to a goopy black mess in just six days, and in the past, it was used to make a kind of ink. These photos were taken over a six-day period from September 19, 2023, to September 24, 2023. The mushroom cap appears to turn inside out as it climbs up the stalk. It is also known as Shaggy Mane or Lawyer's Wig. ~Photos by Chryl Martin



## Rescuing an Injured Hawk

We noticed a broad winged hawk hopping around in the yard. It was unusual behavior, so I called VINS (Vermont Institute of Natural Sciences) and got forwarded to their bird rehabilitation center. They asked if I could catch the bird and bring it to them. Never having caught a hawk before, I asked for instructions. It turned out to be quite simple. I used a bath towel which I gently dropped over the bird. It stayed still. I picked it up very carefully



and placed in a big box in the pickup. I was amazed at how light the bird was. I hopped in to drive over to VINS in Quechee.

Of course, since the CCC road was open, I figured I'd take the shortcut. As I rounded one of the last bends heading down to Rt 100, someone on the way up the hill stopped me to let me know that a tree had fallen across the road and it was impassable. Sigh.... I turned around and proceeded all the way back through Rutland. The poor bird was scratching at the inside of the box the whole time.

When I got to VINS, someone came out to collect up the hawk. She brought the box in and returned with it empty along with the towel. I asked how it was doing and she said that it was pretty feisty considering the poor condition of many of the birds that are brought to them. When she opened the box, it was on its back with talons up in a defensive posture. It seemed like a good sign.

I called a few days later and was informed that they found a puncture wound in its neck that was causing it pain and preventing it from flying. They were administering pain medicine and giving it time to heal. They were also treating it for parasites – not unusual in wild birds. Things seemed to be going well.

I called back two weeks later and learned that just the day before our friend was released back into the wild. Thank goodness for the wonderful work that the folks at VINS do every day. They treat hundreds of birds every year – not just raptors – other birds, bats, and mammals. If you come across a wounded animal, give them a call – 802-359-5000. They're sure to have good advice on what to do and what not to do

*~Article and photo by Jeff Monder*



## Shrewsbury Conservation Commission

### Trail Camera Picture of the month

Shrewsbury's Wildlife Road Crossings Project has identified and mapped over 800 wildlife tracks over the last four winters. The increasing number of moose tracks is a trend we are very encouraged to see! I hope you enjoy these trail camera captures of Shrewsbury moose in various locations!

Send your pictures of wildlife or tracks to Linda Shelvey. [Lpurdyschel@gmail.com](mailto:Lpurdyschel@gmail.com)







# TAP TO TABLE

## AN AUTUMN MARKET

Fun 🍁 Food 🍁 Music 🍁 Artisans 🍁 Beer

### SUNDAY OCT. 6 2024

### 10am-4pm

FEATURING OVER 70 VENDORS INCLUDING:



WITH SPECIAL MUSICAL GUESTS:

**NIKKI ADAMS & BEECHARMER**

Hosted By: **Stewart MAPLE**



Thank you to our sponsorship partners

# ENGEL & VÖLKERS®



—THE—  
**Olde Barn  
YARD**



see you there!

*Southside*  
STEAKHOUSE

5444 VT ROUTE 103, CUTTINGSVILLE, VT





**SAGE**  
SHREWSBURY AGRICULTURAL EDUCATION  
+ ARTS FOUNDATION

Nighttime temperatures have dropped and misty mornings are back. As summer wanes it's hard to believe that students have returned to the Mountain School for a new school year!

Julia, David, Scott and Stephen have worked this summer to tend the school garden and orchard and the students will return to see how their plants have fared. The compost system is nearly complete as well. This fall students will become oriented with the processes of composting the school food scraps and managing the health of the compost system. Ms. McDonaugh's 5th and 6th graders will have a lead role in this work, but the entire school community will play a part as well!



## SNO-BIRD NEWS

The Sno-Birds are going to start their regular meetings in September. They are usually the second Tuesday of the month unless something comes up and we have to change the date. If we have to do that it is always posted on our website ([shrewsburnobirds.org](http://shrewsburnobirds.org)) and Facebook. They are at the Southside Steakhouse in Rutland and they start at 7:00pm. All are welcome even if you are not a member. We have some stop in just to see what we are all about.

September is also when we start working on the trails and Tucker maintenance. The Tucker maintenance I like to have done by mid-October but the trail work goes longer than that. There is work that lasts right through the winter because of the storms in the winter that take down trees and branches, and if we have rains, we sometimes have to repair water crossings so they stayed covered. So basically, from September to April there may be a need to do some work on the trails to keep them open for all the members and other users to make use of them in the open snowmobile season.

If anyone wants to help with trail work contact any club member or watch for trail work posts on our website or our face book page. Hope everyone is having a great summer and that this fall will be nice also! See you on the trails!

~Submitted by Roy Arthur

## REINBOW RIDING CENTER NEWS

After another successful season at Rainbow Riding Center, we would like to thank the following organizations for their support for the 2024 program.



United Way of Rutland County, George W. Mergens Foundation, Ben & Jerry's Foundation, M&T Charitable Foundation Carris Foundation, Stewart Shops, Velco. Their generous contributions provided the funding that allowed us to provide 118 horsemanship lessons. If you are interested in helping to support the mission of Rainbow Riding Center, please consider donating to our local 501c3 non-profit organization. To learn more, go to:

<https://www.reinbowridingcenter.org/support-us>.

At Rainbow Riding we strive to meet the needs of every individual that participates in our programs, mounted or unmounted regardless of their ability to pay. For more information about Rainbow Riding Center and our mission please check out our website: [reinbowridingcenter.org](http://reinbowridingcenter.org) and follow us on Facebook or Instagram @reinbow\_riding\_center and LinkedIn!

Contact us at [programs@reinbowridingcenter.org](mailto:programs@reinbowridingcenter.org) or 802-236-2483 to inquire about our programs and lessons. For information about opportunities to volunteer with us contact [janetupton@reinbowridingcenter.org](mailto:janetupton@reinbowridingcenter.org).



SMS orchard apple trees tented to deter pests.

This summer, Julia and David picked beetles from leaves and carefully tented the orchard trees as well. Ms. Levins 3rd and 4th graders will pick up where Julia and David have left off with weeding, fertilizing and wood chip mulching that will help set the trees up to survive the coming winter.

Stay tuned to see what SAGE and SMS get up to in the garden, orchard, and kitchen this school year!

SAGE, Shrewsbury Agricultural Education & Arts Foundation, has a mission to support and promote sustainable farming and other arts that nourish community life. For more information about SAGE: contact Stephen Abatiell at: [educate.sage@gmail.com](mailto:educate.sage@gmail.com), Joan Aleshire at 492-3550 or visit [www.sagevt.wordpress.com](http://www.sagevt.wordpress.com). Follow us on Facebook for up-to-date event details at ShrewsburySAGE and find our sustainability and arts videos at: [www.youtube.com/@sagefoundation](http://www.youtube.com/@sagefoundation).

~Submitted by Stephen Abatiell



We welcome tennis players to use and enjoy our tennis court this summer. The court is just west of the home at 7983 Cold River Road. Extra racquets and balls are in the red shed adjacent to the court. Come anytime—no need to call!! ~Taffy Maynard 773-2087

ENGEL & VÖLKERS®

MENDI MICHAEL



50 Wickham Lane, Wallingford, VT

**SOLD**

\$450,000



126 Main Street, Ludlow, VT 05149

+1 802-342-8410

Mendi.Michael@EVrealestate.com

©2024 Engel & Völkers. All rights reserved. Each brokerage independently owned and operated. Engel & Völkers and its independent License Partners are Equal Opportunity Employers and fully support the principles of the Fair Housing Act.



## HAPPENINGS AT PIERCE'S

There are some changes happening at Pierce's.

First, our manager Rob Jaimes is moving on to another vocation so that puts the Board in the search for a new manager. A very special thank you to Rob for all the long hours, attention to detail and talent in the kitchen. So much appreciated! Thank you, Rob.

Fortunately, we have some good potential candidates and interviews are being organized. In the interim, Sally Deinzer has stepped into the Interim Manager position, and with the help of a very dedicated staff and group of volunteers, the store will continue to serve the community without interruption. Thank you, Sally, staff, and volunteers, for jumping in and giving the extra time needed to work through transitions.

The store will continue to be closed on Mondays, but that is not related to any staff changes, it's just that Mondays are the slowest day of the week, and it just makes good business sense to be closed.

With change comes opportunity and we look forward to the months ahead with new faces and changes to better serve our customers and neighbors. Pierce's is the same wonderful place to visit, shop, get a bite and catch up with friends. With a very committed Board and staff, and a large group of enthusiastic volunteers, Pierce's will continue to be the place where folks head for groceries, sandwiches, wine tastings, storytelling, food events and just relaxing on the porch over a pastry and coffee.

~Submitted by Mark Youngstrom

### Stop by Pierce's Saturday morning (August 24) to see some antique cars -- all from before 1915!!!

A group from Ludlow are making a tour and plan to stop at Pierce's for coffee and a Button Hill treat. We have ordered twice as much as usual for that day. Bring your curiosity and cameras. The organizers have commitments of six vehicles and they're hoping for more. There is a small chance that the event will be postponed but we should know that by Friday morning. If you come by, please do not park in front of the store. Instead, you can park at the Town Office or in the grass lot to the south of the Store. You can also pull off along the CCC Road to the north of the Store.

### SAVE THE DATE

Laurel Glen Cemetery Association presents

### A Flashlight Walking Tour

Of Laurel Glen Cemetery and Mausoleum in Cuttingsville

Saturday, October 19

first tour at 5:30pm, with tours every 20-30 min. Last tour 6:45pm

Led by Ed Sawyer, Grace Brigham, and Tom Giffin

Wear sensible footwear and bring a flashlight. Rain or shine.

 **NO SCARES, NO SHOCKS, NO JUMPS!** 

All ages welcome

*Learn the history of our wonderful town through stories of the dearly departed*

Donations support Friends of Bowman Mansion

## SING, SAY, DANCE, PLAY

# Family Music Gatherings

Offered by Licia Gambino

*Songs, singing games, dances and instrument play for all family members to enjoy together.*

## FALL SESSION

Sundays, 3:00pm - 4:00pm

September 8<sup>th</sup> - October 27<sup>th</sup>, 2024\*

-Russellville Schoolhouse-

18 Crown Point Road, Shrewsbury

\*On Sept. 29<sup>th</sup> we'll gather at the Shrewsbury Meeting House as part of the Shrewsbury Singers' Concert

Suggested Donation: \$5 -\$10 per Family

For more information, please contact Licia Gambino:

Phone: (802) 492-3792 or Email: [hamgam@vermontel.net](mailto:hamgam@vermontel.net)

## TRACTOR WORK

For all your loading, lifting, digging, grading, grappling, winching & brushhogging needs.



Rob Littmann  
802-774-8835  
Shrewsbury, VT

Front Loader: Bucket, Grapple, Pallet Forks, Bale Spear

Backhoe: 16" Bucket & Thumb

Brush Hog, Forestry Winch, Grading Blade, York Rake, Pallet Forks, Bale Spear



**PIERCE'S STORE**  
**802-492-3326**  
**www.piercesstore.com**  
**Hours: 8am to 6pm**

"The only constant is change." Or "Everything changes and nothing remains still. Or, "You cannot step twice into the same stream." You choose. Change has come to Pierce's Store again, with Rob Jaimes moving on. And I have stepped in again (though it's not the same stream) to keep the place running. I hope this stint doesn't run too long. ☺ Officially, I'll begin on Wednesday, August 28th.

Do you know that Pierce's Store opened on August 25, 2009? We will be 15 years old. I find it hard to believe. The changes that have come about over the years are many, but I hope that you would agree that the spirit of Marjorie and her brothers lives on. Though I did not know her, each time I see the image of Jim Jeffords smiling in the front window, look at the beautiful long counters on both sides of the main store, or when I think of her foresight in gifting the property to the Preservation Trust with the proviso that they find a way to reopen the store, I am grateful. Shrewsbury would be a very different place were it not for Marjorie Pierce.

My agreement with the Pierce's Board is that I will work part time – hopefully 10 to 15 hours a week – and mostly not at the register. I will oversee the operations and manage inventory. I am happy to take your suggestions and or complaints. Please send an email to me at [Pierces.store@gmail.com](mailto:Pierces.store@gmail.com).

You shouldn't notice much change, though the in-house prepared items might be a little rocky at first. We haven't yet worked out all the details in that area. It's still a week away as I write. Ordinary inventory selections should be consistent. The seafood order and process will proceed as always.

I will stay in touch, and I hope that you will reach out when you have thoughts or concerns. See you at the Store!

~Sally Deinzer



**Fall Wine Tasting September 13 @ 4pm to 6pm**

Celebrate the approach of autumn at a Pierce's wine gathering from 4pm to 6pm on Friday September 13. The chamber music trio of Roxanne Ramah violin, Al Wakefield flute, and Kristi Bragg cello will be back in Pierce's Garage by popular demand, accompanied by wines by the glass and delicious appetizers from master chef Heather Shay. Sandy Bragg will be hosting a wine tasting on the porch of Pierce's Store, focusing as usual on high-value wines. We'll include a new line of wines that features classic French wines from Bordeaux and the Loire Valley at reasonable prices (\$9.99 to \$15.99). Please join us for a convivial session.

~Sandy Bragg

**Help Celebrate Pierce's 15<sup>th</sup> Year!**  
 Stop in the store on Sunday, August 25<sup>th</sup> and get a piece of Anniversary Cake!  
 In celebration, new or renewed Memberships purchased at the regular price of \$20 until December 31, 2024 will receive a \$10 credit. This membership will be good through 2025.

**Pierce's Sort of Shrewsbury Slam**

Upcoming soon for you to remember  
 At Pierce's store, 14th of September  
 Starting at five, ending at seven  
 Some shared pieces of Shrewsbury heaven

It's our Sort of Shrewsbury Slam event  
 Poetry, dance, songs, whatever your bent  
 An artistic fundraiser for our wonderful store  
 Yes, the same one that we all adore

So consider please what you can offer  
 Bringing it forward yes from your coffer  
 Share it with our neighborly folk  
 Be it a serious or humorous poke

Slam a poem out loud to all who will listen  
 Sing or dance in shoes that do glisten  
 Call Thomas if desiring to engage  
 With more we'll be merrier, it's all the rage

And to top this event on the day before  
 Sandy hosts a tasting of Cab Sauv's galore  
 With a musical trio, locally sourced  
 And tasty hors d'oeuvres, but of course

So join in community, celebrating us  
 Leaving us each with much to discuss

**Be There!**  
**Shrewsbury Slam!**  
**Saturday, September 14**  
**Starting at 5pm – Ending at 7pm**

**Call Thomas Hartigan before September 10**  
**to sign up to participate: 492-3605**



If you're not on the "Fish Email Order List"....you should be! Sign up at [Orders@piercesstore.com](mailto:Orders@piercesstore.com). Helen Richards-Peelle sends out the fish list each Monday and orders must be placed by 4pm on Wednesday for pickup at the store on Fridays.



The Times of Shrewsbury  
PO Box 373  
Cuttingsville, VT 05738

PRESORT STD  
US POSTAGE PAID  
SHREWSBURY, VT  
05738  
PERMIT NO. 2

To: Postal Patron

---

Donors are recognized for the remainder of the calendar year in which their donation is received. The *Times* is mailed to all residents of Shrewsbury and is also available online. The cost of printing and mailing is made possible through advertising and donations and are very much appreciated, but are not tax deductible. Donations can be made to: *Times of Shrewsbury*, P.O. Box 373, Cuttingsville, VT 05738. **THANK YOU!**

Marti Andersen  
Craig & Peggy Angstadt  
Gary & Minnie Arthur  
Roy Arthur  
Nate & Angela Bailey  
Steve Banik & Virginia Gundersen  
Michael and Elizabeth Bedesem  
Nancy Bell  
Ludy Biddle  
Rich & Cynthia Biziak  
Laura Black  
Karen Braeutigam  
Kristi & Sandy Bragg  
Virginia & Dan Buckley  
John & Linda Calotta  
Mike & Laura Cashel  
Christina Clarke  
Doug & Michelle Crowe  
Marilyn Dalick  
Sally Deinzer  
Deb & Sean Delong  
DiPrinzio Family  
Linda & Philippe Ducrot  
Stan & Louise Duda  
Lizzie & Wayne Emmons  
Nils & Pamela Ericksen  
Kathi & Tim Faulkner  
Gene & Kathy Felder  
Margaret Field & Dale Aines  
Todd Frederick & Michelle Greene  
Lily & Eldred French  
Laurel & David Fretz  
Licia Gambino  
Scott Garren & Heather Shay  
Jonathan Gibson & Eliza Mabry  
Richard Gile & Sue Brown  
Mark & Carol Goodwin  
Pam & Peter Grace  
Greenhagen Family  
Barry & Barbara Griffith

John Guidry & Tamako Okamura  
John & Betty Heitzke  
Betsy Hinckley  
Connie & Bob Hoelscher  
Carmine Iannace & Rita Gyls  
Martha Herbert Izzi  
Diane & Jeff Jakobsen  
Jack & Betsy Jesser  
Ellen Jorgensen  
Michael & Angie Lauri  
Ed & Clare Mangine  
Alice & Padraic Martin  
Gerry & Cheryl Martin  
Stephen & Patricia Martyn  
Charlotte & Todd Maynard  
Taffy Maynard & Family  
Lynn McDermott  
Linda McGuire  
Jeff & Pam Monder  
Moody Family  
David & Georgia Mosher  
Jack & Joan Mulqueen  
Allan Patrick  
Fran Patten  
George and Doris Perry  
Jack & Sharon Perry  
Ken & Coral Petretti  
Susan & Robert Quinn  
Roxanne Ramah  
Rainbow Riding  
Helen & Andy Richards-Peelle  
Ridlon Family  
Lillian & Richard Rohe  
Thomas & Donna Ryan  
Ed & Judy Ryan  
Susan Savage  
Brian & Patricia Sedaille  
Kevin & Mary Alice Self  
Gary & Katherine Shattuck  
Alan & Linda Shelvey

#### Shrewsbury

Community Church  
Conservation Commission  
Cooperative at Pierce's Store  
Historical Society  
Library  
Mountain School PTO  
Outing Club  
Volunteer Fire Department  
Sirjane Family  
Donna Smith  
John C. Stewart  
Tim & Nancy Stout  
Judith & Dirk Thomas  
Paul & Sarah Titterton  
Jess & Ariane Torres  
Anne Vanneman  
Lana Vanucchi  
Arlene Walleth  
Reesa Watson  
Howard & Deborah Weaver  
Michael & Phyllis Wells  
Nancy West  
Christel Wiedmann  
Ali & Rick Wilson  
Lee Wilson  
William & Peggy Wilson  
Winkler Family  
Mark & Connie Youngstrom

