

# Times of Shrewsbury



November 2024

## PLANS FOR A NEW PLAYGROUND

This year we are celebrating the Shrewsbury Mountain School's 50th birthday, born 1974. In its early years, the playground was simple; as Grace Brigham recalls, swings and lots of kickball in the center circle. Taffy Maynard recalls soccer being a regular sight during recess and over time, some monkey bars and a tether ball were added.



*Originally there were two arches like this one in an August 1994 photo. They represented the mountains surrounding Shrewsbury, and the children could climb up and over the arch.*

Then, just over 30 years ago, Lily French & Stash Duda led the charge to build a new and exciting playground at the Mountain School. They transformed the schoolyard from a grassy play space to a beautiful wooden structure that represented key elements from our town. A red fire truck was prominently placed to highlight our amazing SVFD, there were springboards to represent Spring Lake, there were two small house structures; one for Pierce's Store and the other for the Town Hall. The double metal slide was a representation of Upper/Lower Cold River Roads. The playground was a replica of our Town in so many ways.

The community has enjoyed this play space for three decades and we are so appreciative to Lily & Stash for having this vision of a place where kids can play during the school year and where Community can come together during the summertime. Looking back at photos of the playground installation, I see so many familiar faces. Folks came and volunteered both their time and expertise; holes were dug, posts were held, wood was cut, nails were hammered and it was in this true spirit of community that this structure was built. Shrewsbury is, and always has been, a place where you can count on your neighbor to show up and help.

In August of 1994, there was a dedication ceremony, where the official name, "Pierce Playground" was revealed. Glendon and Marjorie Pierce were present and one can only imagine how touched they were to leave yet another lasting legacy in the Town, after that of their General Store.

Now, those of us with a memory of the original structure, look out at our playground and know how many pieces have been removed over the years. Time and weather are unkind to wood and the remaining pieces are showing their age. As we mentioned in a town-wide mailing, there was an insurance inspection that points to repairing and replacing parts of what remains.

As a PTO and Play-ground Committee, we want to move forward on this project with great thanks for what was and with ideas for what will be as we begin the journey again, of revamping the schoolyard and bringing new life to the outside space that the kids love to utilize. In a recent Playground Meeting, Principal Cimonetti shared that students spend approximately one hour of

their day outside on the playground with additional time for students who participate in the After School Program. She also shared that, "Shrewsbury Mountain School's mission is to build a foundation of lifelong learning and citizenship in a global world within each student. The playground is a positive learning environment where meaningful connections are made with the outdoors."

The playground is a place for fun, but also a place where kids can regroup on days when the academic part of school is feeling hard, a place where balance is mastered and upper-arm strength grows while climbing up and down, and a place that provides free weekend recreation close to home. The benefits are many.

As the end of the year approaches, we're asking you to consider a donation to help in this effort.

And.....DRUM ROLL PLEASE!! Kristin Cimonetti met with a donor who is willing to match donations that come in by the end of the calendar year - up to \$25,000!! This is HUGE to bring us closer to our goal!

THANK YOU to those of you who have already made generous donations. All donations made after October 1 will be matched! We are filled with gratitude and couldn't do this without you.

Lastly, the Shrewsbury Apparel Sale is here! See page 2 in this issue for details. Net proceeds support the playground renovation.

*~Submitted by Ingrid Wisell and Ali Wilson  
on behalf of the Shrewsbury Mountain School PTO*

*Donations should be made payable to: Shrewsbury Mountain School PTO (Memo: Playground donation)  
Mail to: Shrewsbury Mtn School, Attn Angie Sharrow,  
300 Mtn School Rd, Shrewsbury, VT 05738*

# SHREWSBURY APPAREL SALE



The Shrewsbury Mountain School PTO is elated to offer the community an opportunity to purchase apparel with our beloved Shrewsbury VT logo; T-shirts, long sleeves, sweatshirts, sweatpants and more... just in time for your holiday shopping needs! Playground Renovation, here we come! You can visit us at the Polls on November 5th where we'll have online ordering info, as well as paper-flyer/order-forms available. If you can't make it to the polls, here is what you need to know.

## ONLINE ORDERING INFORMATION \*\*\* most convenient and easiest\*\*\*



To shop for products ONLINE visit our webstore:  
[all-starink.com/collections/town-of-shrewsbury](http://all-starink.com/collections/town-of-shrewsbury)  
 or scan this QR code.

The webstore is your best option for shipping directly to yourself, or to any address, coupled with the convenience of paying by credit card. There is also an in-store pick up option to avoid shipping charges (All Star Ink, Rutland).

Please share this web address with any out-of-town Shrewsbury lovers!

Web orders can be placed anytime, now through December and will be fulfilled every 14-18 business days.

\*NOTE: apparel on the web is limited to 4 colors: green, forest green, gray and black.

## PAPER FLYER ORDERING INFORMATION \*\*\*locals only, no shipping\*\*\*

For access to a wider variety of color options, shop from our PAPER FLYER.

Flyers can be picked up at both **Pierce's Store** and **Wally's Corner**.

Once completed, please return order forms, with payment (cash or check), to either location or by mail to:

Shrewsbury Mountain School ATTN: PTO  
 300 Mountain School Road, Shrewsbury, VT 05738

For your convenience, you can view, download and print the paper-flyer/order-form by visiting:

[https://drive.google.com/file/d/1Bhc2U71UiWgs0j7SXl302njQMp6rninw/view?usp=drive\\_link](https://drive.google.com/file/d/1Bhc2U71UiWgs0j7SXl302njQMp6rninw/view?usp=drive_link)

\*\*\*Paper flyer orders will be collected for order fulfillment on two occasions (see due dates below)\*\*\*

\*\*\*Please arrange to pick your apparel up at the Meeting House on the given date associated with your order date. There is no shipping option with paper flyer orders.\*\*\*

## PAPER FLYER DUE DATES & Product PICK-UP TIMES

### **First Order Due by Monday, November 14**

These orders will be **distributed** at the Meeting House on Tuesday, **November 26 (5-7pm)** ahead of the Thanksgiving holiday

### **Second Order Due by Tuesday, December 3**

These orders will be **distributed** at the Meeting House on Thursday, **December 12 (5-7pm)** ahead of the Christmas holiday

Questions may be emailed to Ali Wilson at [shrewsburymountainschoolpto@gmail.com](mailto:shrewsburymountainschoolpto@gmail.com)

## TIMES OF SHREWSBURY

The Times of Shrewsbury is published monthly from February through December, and compiled by volunteers from material submitted by residents with the goal of informing townspeople of what is happening in Shrewsbury. The views and opinions expressed in articles are solely those of the author and not necessarily those of the editors.

All submissions must be accompanied by the name of the submitting person and are printed at the editors' discretion subject to editing for length and clarity. Letters to the Editor exceeding 350 words will be subject to editing for length. Any information piece or informational political letters (without specific party or vote appeal) will be subject to the guidelines previously described.

A writer of a letter that directly names a Shrewsbury resident or organization in a critical manner must get copies to the resident or organization, and to the Times by the 10th of the month prior to publication or it will not run. If the named person or organization indicates in writing to the writer and to the Times that they choose not to respond, the letter will run. If the named entity responds, the response and initial letter will run in the same issue.

There is no charge for: jokes, poems, nature reports, family event announcements, feature articles, or letters that are not commercial. Also, there is no charge for appropriate notices of free items.

Articles and Advertisements: Deadline for submission is 5pm on the 20<sup>th</sup> of the month prior to publication; exceptions will be announced in the prior month's Times.

Ads in the Times are for area businesses, local non-profit events, and local ballot election advertisements.

Best Formats: Articles: Word or as an email message with no formatting. Photos: jpeg. Ads: jpeg or Word document.

Monthly advertising fees and relative sizes:

Full page	\$100	(7.5"w x 9.5"h)
Half page	\$60	(7.5"w x 4.5" h or 3.5"w x 9.5"h)
Quarter page	\$12	(7.5"w x 2.5" h; or, 3.5"wx 4.5"h)
Business card	\$6	(3.5"w x 2"h)
Classified ad	\$3	(15 words or less)

Payment due by the 20<sup>th</sup> of the month prior to publication.

7/15/24

Chryl Martin ~ Rich Biziak

Times of Shrewsbury, P. O. Box 373, Cuttingsville, VT 05738

Email: [shrewsburytimes@gmail.com](mailto:shrewsburytimes@gmail.com) Online: [www.shrewsburyvt.org](http://www.shrewsburyvt.org) and <http://www.shrewsburyhistoricalsociety.com>

**SHREWSBURY COMMUNITY CALENDAR**

Oct 25	5 – 6:30pm	*Take out Lasagna Dinner at the Meeting House. Call Lynette, 802-683-0631, to order.
Oct 27	4pm	*Science Book Club meets at the Library
Oct 27	4pm	*WNC Relief Fundraiser Saltash Serenaders and Spintuition at the Meeting House
Oct 31	7pm	*Silas and Friends Concert at Russellville Schoolhouse (Halloween costume); Free will donation
Nov 1	5:30-7pm	*Halloween Party at the Shrewsbury Library
Nov 2	1-3pm	* Luncheon for Wildlife Road Crossing Project Volunteers program at the Meeting House
Nov 3	4pm	*Writer’s Group meets at the Library
Nov 5	10am – 7pm	*General Election at the Shrewsbury Meeting House, 88 Lottery Road
Nov 8	7pm	*Explore the mysteries of A.I. with Scott Garren at the Shrewsbury Library
Nov 9	7pm	*Dance Party at the Meeting House
Nov 15	4-6pm	*Wine tasting at Pierce’s Store
Nov 17	4pm	*Famous Books Book Club meets at the Library
Nov 24	4pm	*Science Book Club meets at the Library
Nov 26	12noon	*Prayer Shawl group meets upstairs in the Meeting House
Dec 6	7pm	*Silas Hamilton & Willy Clemetson in concert at Russellville Schoolhouse; Free will donation
Dec 7	7pm	*Annual Silent Auction and Cookie Swap at the Shrewsbury Library

\*see elsewhere in newsletter for details

**TIMES OF SHREWSBURY**  
 Online at  
[www.shrewsburyhistoricalsociety.com](http://www.shrewsburyhistoricalsociety.com)  
[www.shsrewsburyvt.org](http://www.shsrewsburyvt.org)



**Deadline for submission to *Times of Shrewsbury* is by 5:00pm on the 20<sup>th</sup> of each month.**

**REGULAR MEETINGS and EVENTS**

Selectboard Meeting	1 <sup>st</sup> & 3 <sup>rd</sup> Wednesdays – 6:30pm at Town Office
Bone Builders	Tuesdays & Thursdays--May-Oct: 9-10am; Nov-Apr: 10-11am at Meeting House
Development Review Board	4 <sup>th</sup> Wed -7pm at Town Office; check town website for agenda
Library Trustees Meeting	2 <sup>nd</sup> Tuesday – 7pm at Shrewsbury Library
Mill River Unified Union School Board Mtg	1 <sup>st</sup> Wed 7pm @ MRHS & 3 <sup>rd</sup> Wed. 7pm at MRHS unless otherwise warned
Planning Commission	2 <sup>nd</sup> & 4 <sup>th</sup> Tuesdays 7pm at Town Office
Prayer Shawl Group	4 <sup>th</sup> Tuesday at 12noon upstairs at the Meeting House
Religious Society of Friends (Quakers)	Sundays – 10am via Zoom; contact wildernessfriends@gmail.com
Shrewsbury Community Church	Sundays – 10:30am - Worship service
Shrewsbury Conservation Commission	1 <sup>st</sup> Tuesday @ 5:15pm at 450 Frank Lord Road.
Shrewsbury Historical Society	1 <sup>st</sup> Monday - 5:30pm at the Museum
Shrewsbury Historical Society Museum	Closed for the season; open by appointment by calling
Shrewsbury Singers	Sundays 9-10:30am and Tues 6:30-8:00pm @ Meeting House
Shrewsbury Sno-Birds	2 <sup>nd</sup> Tuesday – 7pm at Southside Steakhouse in Rutland
Shrewsbury Volunteer Fire Department	Thursdays – 7pm at the Cuttingsville Station

**Shrewsbury Town Website: [www.shrewsburyvt.org](http://www.shrewsburyvt.org)**

Clerk’s Office	492-3511	Mondays & Thursdays 8:30am-1pm; Wednesdays 1pm-6pm (Fax 802-492-3383)
Town Garage	492-3656	(Follow prompts to report roadway blockage on non-work days)
Listers	492-2009	Available by appointment
Treasurer’s Office	492-3558	Monday 9am-11am
Transfer Station	492-3867	Sunday 8am-4pm ~ Wednesdays 12noon–6pm
Library	492-3410	Hours: Mon 10am-12noon; Tues 7-9pm; Wed 10am-5pm & 7-9pm; Thurs 7-9pm; Fri 10 12noon; Sat 10am-12noon
Meeting House	492-6050	Reservations: 492-3361 or julanne@vermontel.net
News Flash Email:	vtbenbeano@gmail.com or benbeano@vermontel.net	an email list for Urgent and reminder news information
Cuttingsville Post Office	1-802-230-1996	<u>Window Hours:</u> Mon–Fri 7:30am–10:30am and 11:30am–2:30pm; Sat 8am–11am <u>Lobby Hours</u> Mon– Fri 7:30am–5:00pm and Sat 7:30am–11am
Burn Permit:	Forest Fire Warden Kevin Brown 802-345-8668 or, Deputy Fire Warden Al Ridlon, Jr. 802-282-3642	
Animal Control Officer:	Adrienne Raymond 802-492-3578	
1 <sup>st</sup> Constable:	Aaron Haupt 558-9980	Game Warden: Tim Carey 793-2776
Emergency Management	Aaron Korzun 492-3362	Green Mountain Power outage 1-800-451-2877
Medical-Police-Fire Emergency Dial	911	Ambulance 773-1700 Rutland Hospital 775-7111

[Updated 9/1/24]



**SHREWSBURY SELECTBOARD MINUTES**

*The Selectboard meets the 1<sup>st</sup> and 3<sup>rd</sup> Wednesday at 7pm at the Town Office.*

**October 2, 2024: Minutes of Selectboard Meeting**

**Present at meeting:** Selectboard members: Aaron Korzun, Marc Cimonetti, Francis Wyatt. Town Clerk: Rebecca Rice. Selectboard Interim Administrative Assistants: Laura Black, Nancy Bell. Road Commissioner: Jamie Carrara. Rutland Regional Planning Commission: Stephanie Bourque.

**Members of the public:** None

The meeting was convened at 6:36 PM

**Agenda:** Motion made by A. Korzun to follow the agenda with the addition of work in right of way for Linda Fontana on Russelville Rd: M. Cimonetti seconded. All in favor, motion approved.

**Special Events Permit:** A. Korzun made a motion to approve a special events permit for Split Stills LLC on October 6. M. Cimonetti seconded. All in favor, motion approved.

**Regional Plan Update:** Stephanie Bourque updated the Selectboard on the status of the regional plan. Into the second phase of the process.

**MERP Assessments – Town Office and Old Northam Garage:** Laura Black submitted a grant application for the energy efficiency measures included in the assessments of the Town Office and Old Northam Garage.

**Town Office Electrical Service:** Will need to upgrade the electric service to 200-amp service if heat pumps are installed. Would need a new bigger generator to run the heat pumps when grid power is out. To keep the current generator, it would only power the current loads – not the heat pumps.

**Work in right-of-way Linda Fontana:** A. Korzun made a motion to approve the work in right-of-way permit for Linda Fontana on Russelville Rd. M. Cimonetti seconded. Approved.

**Listers-Errors and Omissions Requests:** The Listers recommended a grand list reduction to \$24,200 for Corey Crossman and Harrington. A. Korzun made a motion to accept the Listers recommendation. F. Wyatt seconded. Approved.

**New Business/Open to the Public:** Nancy Bell reported on the complications for submitting an application for a grant for the culvert replacement below the transfer station. Nancy Bell recommends protecting the wetlands on the town property downhill from the town garage for a wildlife corridor. Jamie Carrara reported on the difficulty of getting a new town truck with the specifications desired. The truck needs to be purchased by the end of the year, since it is using designated ARPA funds.

**Review Minutes:** A. Korzun made a motion to accept the 9/18/2024 Selectboard meeting minutes. Seconded by M. Cimonetti. Approved.

**Review Orders:** F. Wyatt made a motion to approve Selectboard Orders #10 for \$8,777.99 and Road Orders #10 for \$24,263.47. Seconded by M. Cimonetti. Approved.

**Adjourned at 7:44 PM**

*Respectfully submitted, Francis Wyatt*

**October 16, 2024: Minutes of Selectboard Meeting**

**Present at meeting:** Selectboard members: Aaron Korzun, Marc Cimonetti, Francis Wyatt. Town Clerk: Rebecca Rice. Selectboard Interim Administrative Assistant: Laura Black. Road Commissioner: Jamie Carrara.

**Members of the public:** None

The meeting was convened at 6:40 PM

**Agenda:** Motion made by A. Korzun to follow the agenda with the additions of: Contract for TH#2 Northam culvert replacement, Work in right-of-way permit for Scott Wheeler on Keiffer Rd. F. Wyatt seconded. All in favor, motion approved.

**Town Health Plan Renewal:** A. Korzun made a motion to approve staying with the BC/BS Platinum plan for 2025. M. Cimonetti seconded. All in favor, motion approved.

**RRPC-Update to Town Dues Rate Structure for FY26:** The RRPC is changing to a rate based on the town population. It will go from a \$1,000 currently to a dollar per person which will be around \$1,096 for Shrewsbury.

**Work in Right-of-way for Scott Wheeler on Keiffer Rd:** A. Korzun made a motion to approve the work in right-of way for Scott Wheeler on Keiffer Rd., following the Road Commissioners directions. Seconded by M. Cimonetti. Approved.

**Contract for TH#2 Northam culvert replacement:** Discussed the proposed contract from MSK Engineers for the TH#2 Northam culvert replacement. A. Korzun made a motion to approve the proposed contract. F. Wyatt seconded. Approved.

**New Business/Open to the Public:** None.

**Review Minutes:** A. Korzun made a motion to accept the 10/2/2024 Selectboard meeting minutes. Seconded by M. Cimonetti. Approved.

**Review Orders:** F. Wyatt made a motion to approve Selectboard Orders #10a for \$8,511.95 and Road Orders #10a for \$286,444.57 (\$275,051.75 for paving). Seconded by M. Cimonetti. Approved.

**Adjourned at 7:20 PM**

*Respectfully submitted, Francis Wyatt*

*These minutes are unofficial until approved by the Selectboard at the next regularly scheduled meeting.*

*Editor's Note: The minutes have been edited for brevity but not content. For complete minutes, go to the Town website [www.shrewsburyvt.org](http://www.shrewsburyvt.org)*

**PVF Services LLC**  
Excavation, Trucking, driveway repair, site prep, building removal, brush grinding and much more!

<b>Neal and Chad</b>	1368 lincoln hill
Cell 802 236 8105	Shrewsbury Vt, 05738
Office 802 492 3364	sharrowmaple@gmail.com

# GENERAL ELECTION IS TUESDAY, NOVEMBER 5, 2024



The Polling place is the  
**SHREWSBURY MEETING HOUSE**  
88 LOTTERY ROAD  
SHREWSBURY, VERMONT

**POLLS ARE OPEN FROM 10am to 7pm**

If you have not received a ballot in the mail and think you should have, please contact me. If you are not registered, it is not too late and can even be done at the Polling Place on election day. If you want to make sure I have received your ballot, please give me a call or check online at <https://mvp.vermont.gov>. Your voter page should show when your ballot was checked in by the Town Clerk.

The state did get the ballots to Shrewsbury sent out on September 24, 2024. They were sent to all voters on the checklist as of September 9, 2024 except for voters who had been challenged or had not taken the oath. I have now received oaths from all but 2 voters and the others have received their ballot in the mail. So far, I have received ballots back from approximately 20% of the active voters in town.

You can return your ballot as soon as you receive them or any time before 7:00pm on Tuesday, November 5, 2024. You can either mail them to the Town office, bring them in to the office or drop them in the Dropbox outside the office any time until 1:00 PM on November 4, 2024. After that time, you will need to bring them to the Polling Place at the Meeting House, 88 Lottery Road, Shrewsbury, Vermont between 10:00am and 7:00pm. If you are voting in person, it would be appreciated if you would bring the ballot you received from the State in the mail. Although there will be ballots available at the polls, you will need to complete two additional forms to certify that you (1) lost your ballots or no longer have it and (2) that you did not previously cast your ballot.

I have been asked a couple of times about what happens with the ballots which are voted early, so I am letting you know the procedure. Once a ballot comes in to the Town Office, either by mail, placed in the dropbox or brought into the office, it goes into the vault. Several times a week, a member of the Board of Civil Authority comes in (thank you Barry Griffith) and the outer envelope is opened and the inner envelope is checked to make sure that it is properly executed. If it was not properly executed, I will contact the voter so that the defect can be cured. The name on the ballot is then entered into the computer in both the Town and the Secretary of State's office. The ballots are then put in a locked ballot box in the vault until the day of the election when they are taken to the polling place either by the clerk or a member of the BCA. Shrewsbury does not start counting ballots until election day.

On election day, the ballots already received are processed by members of the Board of Civil Authority. The BCA takes a bundle of envelopes and opens the envelopes with the back side up so they do not know whose ballot it is. The ballots are then mixed around and then run the ballot through the tabulator

by a BCA member. The voted ballots envelopes are then given to the check-out clerk who checks them off the list and are then given to the check-in clerk to clerk who puts in the list that the ballot has actually been voted. The lists include the date the ballot was received by the clerk, but does not show that they are actually voted until they have been run through the tabulator. Once the polls close, the BCA and clerk make sure that the numbers of ballots shown on the tabulator are the same as the numbers on the check-in and check-out lists.

I hope this demystifies the process for those who are interested or had questions about the early voting process.

If you have any questions, feel free to contact me at 802-492-3511, 9823 Cold River Road, Shrewsbury, VT 05738, or [shrewsburyclerk@vermontel.net](mailto:shrewsburyclerk@vermontel.net).

*~Submitted by Rebecca Rice, Shrewsbury Town Clerk*

Dear Voters

I am running for the Rutland/Windsor 1 House seat. I am running because I think I have a great background to serve effectively in the Legislature on your behalf. I understand the many differing issues facing our 3 towns- I served as Auditor and Lister and serve now as Animal Control, JP, and Zoning Administrator. I understand how our schools function and how they are funded- I served for 20 years on my local boards. I understand the many social problems that face our state- I serve as a Guardian ad Litem in the Family Court System.

I will:

- Support our public schools. Keeping our elementary schools in our communities. Will my opponent?
- Support sensible changes to our Ed Fund financing system.
- Support state funding for community sewage and water systems to encourage growth in our smaller villages and towns.
- Support rule changes to allow quick conversion of hotels/motels into apartments as well as rehabbing of our rundown housing.
- Support a state-funded revolving fund for this work.
- Support smart homeless prevention programs- we must house our vulnerable population. Does anyone want to see the chronically ill, kids, pregnant women living in tents?
- Support legislation that will make the lives of families with young children easier and more affordable. Will my opponent?

My promise is to listen to all sides before making any voting decisions.

I am proud to say that I am both Socially Liberal and Fiscally Careful.

Please consider giving me your vote on November 5 or before.

*Sincerely, Adrienne Raymond*

Paid for by Adrienne Raymond for Vermont  
Treasurer: Scott Garren 135 Spring Lake Rd Shrewsbury, VT  
[VoteAdrienneRaymond.com](http://VoteAdrienneRaymond.com)

## LETTERS TO EDITORS

### Who is the best choice for State Rep?

Voters have a real choice in this election between Adrienne Raymond of Shrewsbury and Kevin Winter of Ludlow to be our State Representative. With her 22 years on our local and District school boards, Adrienne is uniquely well-qualified to address the #1 issue in the 2025-2026 Legislature: ensuring that education property taxes are affordable without compromising our children's education. Kevin lacks any similar experience in educational leadership.

Adrienne has served for many years in a variety of town government positions - lister, Zoning Administrator, Justice of the Peace, animal control officer. Kevin does not have any such record of municipal service. Adrienne believes in the U.S. Constitution's separation of church and state. Kevin has said, "If I get elected, I will be the evangelical Christian John Dutton of Vermont", referring to the hero of the TV western series "Yellowstone".

When asked at a candidate forum in Ludlow, "Are you committed to prioritizing child care so we can solve the child care crisis in Vermont?", Adrienne replied, "Yes ... it's a game-changer for young people in this state to be able to have quality child care." Kevin said, "I do know the best place for a young child to grow up is with their mother."

Adrienne also believes in complying with the legal requirements of Vermont's campaign finance law. Her lawn signs and written materials fully disclose who paid for them. By contrast, many of Kevin's roadside signs have no indication whatsoever of who paid for them; others that do still fail to give the full information required by statute. If Mr. Winter asks voters to elect him to make our laws, shouldn't he follow the law himself?

So ... two very different candidates. Make your best choice and vote on or before Nov. 5. *Submitted by Jonathan Gibson*

### Voters,

I'm hoping that most of you at least know who I am from Town Meetings, school board events or from a zoning hearings. Mr. Winter has been in Shrewsbury numerous times introducing himself, but there has been no opportunity for you to hear us together in the same room answering questions. Here is that chance. Ludlow's Friends of the Ludlow Auditorium held a forum on Oct 10 for Windsor City candidates and included Mr. Winter and myself. The questions and many differing answers made for an interesting evening. I've also included a recording of Mr. Winter's introduction to the Ludlow Area GOP Community from April 29. There are other resources out there as well. I've added the Secretary of State's website and VTDigger's Voter Guide as a start. I hope you vote and participate in the future of our country.

#### Ludlow GOP Intro

<https://www.youtube.com/watch?v=Ax3n6UMpTIA>

#### Ludlow Forum:

<https://www.okemovalley.tv/foia-legislative-candidate-forum>

#### VTDigger:

<https://vtdigger.org/2024-general-election-guide/>

#### Secretary of State

<https://vt.omniballot.us/sites/50/sb/app/sb/vg/instructions>

Adrienne Raymond,

Candidate for House Representative Rutland/Windsor 1

### Who IS the best choice for State Rep?

Certainly, this new politician has made mistakes, like having to affix tiny labels on 20 of his 120 lawn signs & 3000 door hangers. But it is sad that an attempt at self-deprecating humor during a Republican rally or an expression of heartfelt belief about the well-being of our little children would become the cause for derision from anyone, when we have a state in sustainability havoc.

Do we want more of the same bureaucratic thinking **OR** someone with 40 years of success in a complex business world working in a team environment, willing to listen, a moderate voice of reason, bringing balance to a one-sided body?

I will not face unrelenting pressure from party leaders to vote in lockstep to pass a progressive agenda (e.g., Clean Heat Standard seeking to add \$1.79 to \$4 per gallon of heating fuel), bringing "more of the same", and will give the residents of Ludlow, Mount Holly, and Shrewsbury a voice in support of Governor Scott's effort to restore moderation and fiscal accountability in Montpelier.

It's been stated "When you find yourself in a hole, STOP DIGGING!"

*Submitted by Kevin C. Winter for VT House*

~~~~~

### Traveling "Musicians"

A submission in the September 2024 issue of the *Times* painted a picture of struggling musician immigrants that are trying their very best and just hoping that America will allow them to thrive. The message seemed to be that the fate of these down-on-their-luck musicians is in the hands of Americans and only kindness and cash contributions are holding them back from being productive members of society.

The problem is that the "musicians" are not musicians; they are frauds. It is disturbingly a problem that has been seen across the country the last few years and one I have personally seen from Brattleboro to Burlington this summer alone. A man pretends to play along to a song blaring over a speaker behind him. Watching his hands more than a few seconds makes the hoax plain. The recordings are legitimate musical releases of various artists found on music streaming platforms. Real, talented violinists being ripped off by a poser in a parking lot. And yet, at each place I have seen the same act repeated, car after car stops and forks over cash. Giving a fraudster money is not a sign of virtue. It is a sign of naivety.

The idea that these traveling "musicians" or any of the other local panhandlers are able to stand on their feet in the hot sun for hours a day but cannot possibly hold a legitimate job is laughable but the joke is on more than just the people that are encouraging their behavior. If you want to help, listen to the advice of advocacy groups (and the signs that had to be installed at the plaza in Rutland since the problem is so pervasive) and donate to an organization that looks for long term solutions for those that truly need help.

*~Submitted by Tanner Melen*



# HALLOWEEN PARTY



**November 1st 5:30 - 7:00**  
**At the Shrewsbury Library**

## RIVERWOOD

LAWNCARE, LLC

FULLY INSURED

### FALL CLEAN UP TIME!

FREE ESTIMATES



Waist deep in autumn leaves???  
The **Ventrac** power blower  
and power broom make for fast cleanup!!

Field growth high??? Let us help with our  
**Ventrac** tough cut/brush hog service!!

Heavy rains damage your driveway???  
**Ventrac** Power Rake regrades gravel  
driveways.

**802.770.0433**

riverwoodlawncare@gmail.com



### Notice of Road Project in Shrewsbury

In response to the periodic flooding the Town of Shrewsbury is moving forward to address issues on Town roads to restore, replace or install ditches, drainage, or infrastructure to mitigate or prevent future flooding and damage. One of these projects is the replacement of a “failed” culvert on the Northam Road just below the Mountain School Road on a headwater stream of the Cold River. The Project’s “official” name is TH#2, or Town Highway #2 culvert.

A failed culvert is one that no longer serves the purpose for which it was designed. In this case the culvert, having been in place for decades, has been damaged by age and severe flooding such that the stream flows under and around as well as through the metal culvert. This notice is to inform Shrewsbury residents of the upcoming activities that will be occurring in this area with the culvert replacement.

The Northam Road is a primary artery for the Town and is critical access to Northam/North Shrewsbury and the Town Office, Pierce’s Store, and the Shrewsbury Mountain School Road which serves the Elementary School, the Transfer Station and the Town Highway Garage and Emergency Management, as well as several businesses in the local area.

An engineering firm has been engaged and will begin the necessary on-site studies and surveys to complete the planning and design for the project. They will be responsible for acquiring permits, engaging contractors, and other preparations necessary for the anticipated removal and new construction of a culvert in the late spring. Please be aware that the engineers and other contractors will be on Northam Road at the culvert site and up and down the road near the Mountain School Road. Replacement of this culvert is a necessary first step in the anticipated removal of the dam on the Mountain School Road. If the dam is taken out to address flooding it would require the pond to be drained downstream through this culvert. Disaster averted!

Given the national and regionwide flooding disasters the Federal Emergency Management Agency – FEMA, and the State of Vermont have Hazard Mitigation and other specifically related funding available. The Town has a significant portion raised toward this project and is moving ahead seeking additional sources.

The Selectboard will continue to be in regular communication to alert you to work being done in the area that will affect access, traffic speed and/or traffic patterns. As the project begins, please take note, follow alerts and signage and give yourself a few minutes extra to get to where you’re going. Please keep yourselves and the contractors safe! Thank you for your cooperation and patience through these next few months on this project! ~Shrewsbury Selectboard

## MILL RIVER UNIFIED UNION SCHOOL NEWS

During our October 1 finance committee meeting we received a YTD budget summary from the business office. The district is expecting another budget surplus at the end of the fiscal year, primarily from unfilled staffing positions. The district administration feels we are adequately staffed at this time. (This fact comes into budgetary play as we move forward.) We also saw a draft rollover budget. Given the cost increase pressures we have seen for some time, a rollover budget would result in a 3.47% increase, and that doesn't take into account support staff contract negotiations and administrative raises that will be coming this year. The finance committee has asked the superintendent and business office to come up with a proposal that would have a 0% increase and a proposal with just a 2% increase. Both of these proposals will only be possible with strategic cuts (and perhaps some strategic goal-oriented additions.)

Strategic cuts being explored: The unfilled staff positions mentioned above are some of the pieces that will be added or subtracted from the 3 budget scenarios. The currently budgeted, but vacant positions that are being considered include: an Elementary Language Teacher and Special Education Support Staff positions.

Another large budgeted expenditure that isn't being utilized this year is special education tuition money. This money is budgeted for special cases in which a student may be better served by an outside program. In the past, some of these district students attended LiHigh School in Poultney, which closed this past June. Finding outside placements for these students is becoming increasingly difficult, not just in our district, but across the state. We will consider how best to budget for these students' needs, in the wake of LiHigh's closing.

Goal-oriented additions are being considered: We received some good community feedback from our two budget forums this month, and a few things to consider during this budget's creation. The proposal likely with the largest budgetary impact is to consider adding math interventionists to our elementary schools. (We currently have focused efforts on reading interventionists.) This potential addition will be discussed in the upcoming finance committee meeting on October 29.

If you find school financing difficult to follow and scratch your head over the LTWADM and CLA check out our October 2 board meeting where Brian Hill gave a VT school financing 101 presentation. It can be found on PEGTV at this link: <https://youtu.be/02-DMnuLJUg?feature=shared&t=941>

Our next finance committee meeting will be on October 29 at 5:30pm. In this meeting we will discuss and compare the 3 budget scenarios the committee has asked to see. These meetings have a virtual meeting option and the public are encouraged to attend. Our November meeting will focus on fine tuning a budget in line with our recommended path forward and likely finalizing a district budget for the full board to vote on. Again, community participation is appreciated and encouraged.

You can find more information about Mill River Unified Union School District, our board, and meeting agendas and minutes at <https://www.mruusd.org>. You can find information on upcoming school board meetings and their virtual sign in information at <https://www.mruusd.org/board/calendar>

~Submitted by *Stephen Abatiell*, Finance Committee Chair

# When you find yourself in a hole, **STOP DIGGING!**



State spending has increased 43% since COVID, causing taxes and fees to skyrocket. For many Vermonters like me, a retiree, a deep hole has been dug, made worse by inflation. Now, progressive legislators are proposing to add \$1.79 to \$4.00 per gallon to home heating fuel. This madness needs to stop.

Greater fiscal accountability and affordability can be restored if Governor Phil Scott gains the support of just a handful of moderate legislators willing to combat a veto-proof supermajority. The Ludlow, Mount Holly,



Shrewsbury district could be the key, so every vote counts. Don't leave it to others to protect your pocketbook. Vote Kevin Winter for change.

**Kevin**  
**Winter**  
VT House of Representatives  
Ludlow • Mount Holly • Shrewsbury

Want to talk? Call (802) 245-4190 or email [kcwinter5783@gmail.com](mailto:kcwinter5783@gmail.com)  
Paid for by *Kevin Winter for VT* 1476 East Hill Rd, Ludlow, VT 05149

**FREE!**  
Ethan Allen Full/Double Bookshelf-Type  
Headboard and Bedframe  
All Hardware  
Good Shape  
802-492-2255





## SHREWSBURY VOLUNTEER FIRE DEPARTMENT

It was a busy month for the SVFD! We responded twice to mutual aid calls to East Wallingford. The first response was to East Wallingford was for a possible structure fire. It was determined to be a controlled burn and the call was cancelled while enroute. The second call was for a single vehicle rollover on Route 103 near the trestle. The lone occupant was out of the vehicle and uninjured. The third call was a smoke alarm activation on Upper Cold River Rd, which was determined to be a faulty detector. We also responded to two mutual aid calls to Ludlow. The first call was for water transport with our tanker. A construction vehicle had broken a valve off a propane tank. Water was sprayed on the leaking gas until the fuel supplier could safely replace the valve. The second call we responded with our tankers and pumper for a structure fire.

On Drill night we had a donated vehicle to practice use of our extrication equipment. We try to imitate a scenario we may be called to respond. We discuss vehicle location to provide good lighting, equipment needed, use of tools, scene safety, and methods used to safely remove parts of the vehicle to extract a possible trapped occupant.

October is fire safety month!! Bob Snarski, Safety Officer, acquired the State Fire Safety trailer for a morning safety program at the Mountain School. Bob did a great job leading the class! It began with a general assembly, during this time he explained how the fire department performs in different circumstances. He explains the importance of each piece of equipment and its purpose. He reminds the students how to stay safe, and when to call 911. Bob also takes questions from the kids. After the assembly, the individual classes toured the safety trailer with Bob. Chief Phillip Severy reviewed the equipment on our Engine. Two of our junior firefighters, Ethan Severy and Dillon Thomas, assisted Mark Goodwin in distributing helmets, small gifts and water bottles to the students. Lieutenant Al Ridlon, Firefighter Jack Perry and Firefighter Keith Patterson assisted as students toured the equipment. Junior Firefighter Aydan Patterson was costumed as Sparky the Fire Dog!

This October was our 72nd year of the Shrewsbury Volunteer Fire Department Annual Business meeting. We discuss the past year's events, the number of calls and elect officers for the coming year. Chief Phillip Severy accepted a nomination and was again voted in as Chief. Other officers elected were President - Jack Perry, Vice President -Bob Snarski, Treasurer - Barry Griffith, Secretary - Mark Goodwin, Trustee - Mark Stewart, Trustee and County Representative - Hal Niblack.

Chief Severy presented the Peter Cosgrove Award for Distinguished Service to Barry Griffith

and the Chief Snarski Award for Exemplary Service to Keith Patterson. Congratulations to them both.

Many thanks to all the SVFD members for their commitment and continued work and time to the Town of Shrewsbury.

Winter will be here soon, so now is a good time to ensure your fuel burning equipment is in good condition, change your smoke and carbon monoxide detector batteries, clean your filters in your heat pumps, check your fire extinguishers and

**REMEMBER  
STAY FIRE SAFE!!!**

~Article by Jack Perry



### BURN PERMITS

If you are plan to burn brush you **MUST** call for a burning permit. **Contact Forest Fire Warden Kevin Brown 802-345-8668 or Deputy Forest Fire Warden Al Ridlon, Jr 802-282-3642.** The landowner is responsible to control a brush fire, ensure you have proper tools, water supply, and people to assist in containing the fire.

### THE SVFD NEEDS YOU!

We need new and younger members. The Shrewsbury Volunteer Fire Department (SVFD) can provide equipment, training, and support. Whether you've had prior experience as a first responder or have no experience at all! We need volunteers. Men or women who would like further information may call Bob Snarski at 492-3505, Barry Griffith at 492-3573, or Jack Perry at 773-3278. No commitment necessary.

**MELER & SONS**  
802-492-3931

- Official state inspection center
- Call for appointment
- Snow plowing - sand & salt available
- Lawn care
- Small excavating
- Call for estimates

ALSO: RUTLAND & SURROUNDING TOWNS

220 Stewart Lane, Shrewsbury, VT 05738  
(Off Town Hill Rd., 1/4 Mile from Rt. 103)  
Shop: 802-492-3931 | Jon: 802-353-4536 | 802-558-1958 | 802-558-2123

**Hello Supporters of Live Music!**

Our summer concert series may be in the rear-view mirror, but we have more in store right here in Shrewsbury. Please mark your calendar for Sunday, Oct 27 at 4 pm at the Meeting House and come out and support those who need it.

Our dear friend and fellow musician, Silas Hamilton, (who has graced our Shrewsbury stage many times) had a week's worth of gigs in N.C. cancelled due to Hurricane Helene's effect on the Asheville, NC area.

So, what does a musician do when their livelihood is interrupted? They think of others. Silas remembered that our dear friend Tom Mitchell, former Shrewsbury resident and fellow Serenaders bandmate, would ALWAYS prompt the rest of us to perform for a fundraiser concert for those who are going through major life interruptions and devastation of homeland. Whether it was in Haiti, or El Salvador or in the U.S., Tom would rally the musical troops and we'd do a concert.

Now is no different. So, in the spirit of Tom Mitchell, here we go! And we do hope you'll support the effort with your positive presence, your dollars, and your own spirit of taking care of those who have less than you.

Please join us. Free will donation. All monies go to support theleaf.org and bounty and soul.org, organizations at work to provide relief in the western North Carolina region.

Submitted by Victoria Arthur

**WNC Relief Fundraiser**

Sun. Oct \_\_\_\_\_ AT 4PM  
27th

**With Music From:**

**The Saltash Serenaders**

**Spintuition**

**Silas & Friends**

**And More!!**

for: **bountyandsoul.org**  
theleaf.org

ALL PROCEEDS TO BENEFIT THOSE IN WESTERN NORTH CAROLINA AFFECTED BY HURRICANE HELENE

Shrewsbury Meeting House- 88 Lottery Rd, Shrewsbury VT

**FREE WILL DONATION**

**NEW TELEPHONE #**  
**CUTTINGSVILLE POST OFFICE**

**1-802-230-1996**

**DANCE PARTY  
at the  
MEETINGHOUSE**

**TO BENEFIT THE  
MOUNTAIN SCHOOL  
PLAYGROUND  
RENOVATION**

**ALL AGES WELCOME! FREE WILL  
DONATION AT THE DOOR**

**SATURDAY, NOV. 9  
7 PM**

SHREWSBURY'S OWN DJ, BRETT MYHRE, IS DONATING HIS TIME TO PLAY YOUR REQUESTS!

Please feed his Tip Jar!



EMAIL OR TEXT YOUR FAVORITE DANCE TUNE AHEAD OF TIME AND BRETT WILL CURATE THE PLAYLIST.

CONTACT Vicky Arthur at [singtolive57@gmail.com](mailto:singtolive57@gmail.com) or 802-558-2708

Pierce's will have 802 Ice Cream Bars for Sale





## NEWS FROM LAUREL GLEN ASSOCIATION (LGA)

The last Open House of 2024 coincided with Tap to Table. We had our largest crowd ever visiting the museum, more than 125 people! Folks who'd visited before commented on how many improvements were made this year. The 1880s porch set, bed, hutch, bookshelf, reading chair, tables, clocks, rugs, sewing machine, and trunk generously donated by Larry and Mary Marzec-Gerrior of Mendon, are set up in and look perfect. The "new" bed is a close match to the one in Mr. Bowman's bedroom. One clock tones the hour, adding charming ambience to the parlor. A dozen or so people signed up for the Laurel Glen mailing list and will start getting communications from LGCA in the new year. If you'd like to get involved at the mansion, conservatory, or cemetery, email [Freddie.monder@gmail.com](mailto:Freddie.monder@gmail.com)



The maiden flashlight tour of Laurel Glen Cemetery on Oct 19 was a resounding success and the last event of 2024. Ed Sawyer, Grace Brigham, and I organized a walk through the history of our town. We were joined by Trustee Tom Giffin, Alannah Severy, and Jeff Monder to show highlights of the cemetery and

tell stories of colorful and interesting Shrewsberries interred there. The weather cooperated for the 41 attendees (one from Canada!) who came with flashlights and good humor. The trail was lit by luminaries that gave the cemetery a beautiful atmosphere. The open mausoleum was lit by candle lanterns; it was magical to view the interior by flickering candlelight. No aberrations were reported! This is an event we will definitely do again!

Thanks to Ann Vannemann who helped clean up after the cemetery tour! And thanks to Ed Sawyer, Barry Griffith, and Fred Michele for help with moving furniture and rugs!

**"Did you know?"** We need people to help with research, renovations and repairs, painting, cleaning, gardening, docenting, moving furniture, web and social media, artwork, filing, and so much more. Our youngest volunteer is 10; it's never too early to think about community service hours for graduation and college applications. Contact us on Facebook <https://www.facebook.com/share/7xaxtDDBn5AHM9dH/> or at the above email.

We are a 501 c-3 organization; donations to Friends of Bowman Mansion can be sent to 333 Town Hill Rd, Shrewsbury, VT 05738. ~Submitted by Pam Monder



On Tuesday, October 8, eleven Green Mountain Neighbors and friends gathered at the Shrewsbury Meeting House so carpooling would reduce the number of vehicles that would need to find parking space on a back road over the line in Plymouth. Seven Shrewsberries were among the hikers.



Barry Griffith, a Shrewsbury explorer and historian, led the walk to Vermont's Unknown Soldier Gravesite. Revolutionary War soldiers used the Crown Point Road to move about. One soldier died near the road while returning to his home. He was buried by his compatriots.

The site is marked by a sign erected by the Mount Holly Boy Scout Troop 17 in 1984. Flags and stones mark the grave.

The hike was easy, and the group enthusiastically called for more similar events. We hope for another in early November, but none is scheduled yet. Watch the local bulletin boards and the GMN website for information.

See our website at <https://greenmountainneighbors.org> or call us at 802-417-2292.

**We're open and ready to serve you! Contact Us Today!**  
~ Submitted by Sally Deinzer

### ~~~~~ Donation Time

The Times is mailed to all residents of Shrewsbury and is also available online on the Shrewsbury Town, and Shrewsbury Historical Society websites:

[www.shrewsburyvt.org](http://www.shrewsburyvt.org)

and

[www.shrewsburyhistorical society.com](http://www.shrewsburyhistorical society.com)

The cost of printing and mailing is made possible through advertising and your donations, which are much appreciated, but not tax deductible. Donors are recognized for the remainder of the calendar year in which their donation is received. However, if you contribute between now and the end of this calendar year, you will be recognized for the remainder of this year **and** all of next year! You determine the amount--any and all donations are appreciated! *—The Editors*





Shrewsbury Library's

## Holiday Celebration

Featuring our famous

# Silent Auction

and

# Cookie Swap

## Saturday, December 7th

starting at 7pm

**In the Great Room .....**

**enjoy wine, cheese and live**

**background music by**

**Shrewsbury's own Marcos Levy**

**Join us upstairs at the**

**Silent Auction**

**for the fun filled bidding wars**

**Bake a big batch of your favorite**

**cookie recipe to share.**

For more information, please call Lisa at 802-492-3732

or e-mail the library at [slibrary@vermontel.net](mailto:slibrary@vermontel.net)

### The Bitter with the Sweet

As you read this, the Earth is turning into its new season, the soft rustling of leaves giving way to the Halloween wind's whistles and howls. The unbelievably bright and colorful scenes subside into the familiar but always challenging starkness and grey of our "stick season". Light fades from both ends of the day. Bitter.

Time to get outside and take in what light is available. Inside, light the fires and gather the warmth of good company. Sweet! Most plant life is fading or withdrawing to await the next growing season, but some plants still sport green leaves. Alongside our evergreen trees and ferns, invasive honeysuckle and buckthorn continue to bully their way into our valuable forests. Burning bush and barberry may have lost their bright leaves, but they have sent their berries full of seed out into the woods.

Bittersweet - that is how I like my chocolate, but not my vines. Oriental Bittersweet is a vine that aggressively climbs trees and strangles them. Its tendrils wind tightly around the trunk and branches of an unlucky tree and then grow thicker, cutting off the tree's circulation. We have lots of it in Shrewsbury! It can be distinguished from our native grapevine and wild clematis by leaf shape (round or oval and pointed) and by the red and yellow fruits it produces. These have long been used to adorn wreaths that hang on doors and are later discarded willy-nilly to spread those seeds far and wide. Please don't do that anymore! If you do make use of the bright fruits that are, after all out there, be sure to dispose of them in the trash.

You might see me still out along the roads cutting those vines and removing what root I can, while also pulling or girdling honeysuckle, buckthorn and burning bush, placing the "carcasses" on a built-up pile to desiccate and die. In contact with the ground, some will reroot. Alas! Invasion continues in our woods and open areas alike. Bitter.

This season, SCC volunteers did a bang up job of patiently removing scads of garlic mustard, poison parsnip, wild chervil and purple loosestrife. Our ongoing quest to outlast the seed banks in many areas of town is slowly succeeding. Sweet !! We have an ongoing Need for volunteers able and willing to assist with these efforts.

If you are such a person, please email pfd53@icloud.com to be added to a roster for occasional call outs. Thank you!

~Article by Pamela Darrow

## VETERANS DAY



November 11, 2024

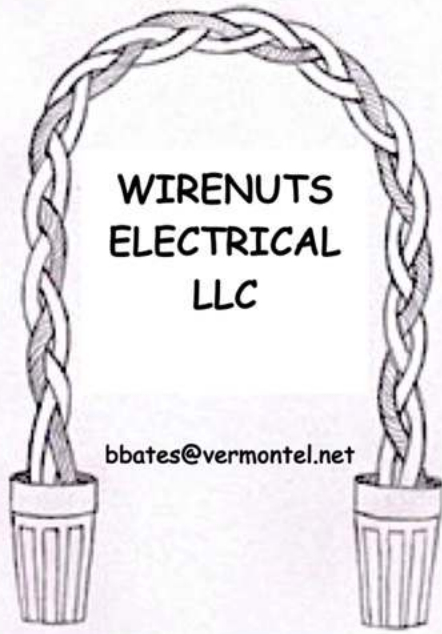


**Thrive Center**  
OF THE GREEN MOUNTAINS

Chiropractic Care  
Applied Kinesiology  
Therapeutic Massage/Bodywork  
Holistic Health Education  
Nutritional Supplements  
Coaching • Worksite Wellness

**Joseph P. Donohue, DC**  
**Lisa Marie Donohue, MA, LMT**  
*Serving the Community with Excellence  
and Compassion Since 2000*

**68 South Main St, Wallingford, VT**  
**☎ 802.446.2499 • [instagram.com/thrivecentervt](https://www.instagram.com/thrivecentervt)**



**WIRENUTS  
ELECTRICAL  
LLC**

[bbates@vermontel.net](mailto:bbates@vermontel.net)

**REBECCA BATES  
LICENSED  
ELECTRICIAN  
802-492-3406  
802-353-4376**



**Small Farm Flavor & Quality !**  
VT Maple Syrup & Maple Treats

Cook once and eat twice - check out

- beef roasts
- short ribs
- ground beef
- ribeyes
- local eggs
- pork sausages
- pork chops
- ground pork
- chicken breasts

**Thank you for shopping local at our small farm !!**

2450 Lincoln Hill Shrewsbury VT      [SmithMapleCrestFarm.com](http://SmithMapleCrestFarm.com)  
802-492-2151

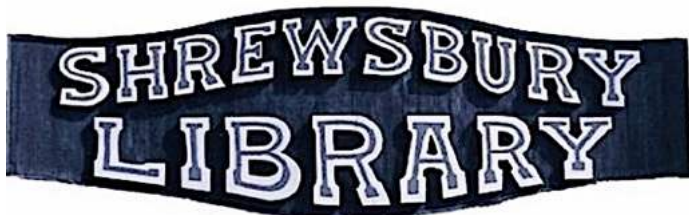


**EXCAVATION AND SNOW  
REMOVAL**

- \* Free estimates
- \* Offers seasonal rates

**Nicholas Greene**

Mountain School Road Shrewsbury VT 05738      **802.855.1215**  
[DIGPROLLC@GMAIL.COM](mailto:DIGPROLLC@GMAIL.COM)



Library News Submitted by Joan Aleshire

**LIBRARY & FOOD SHELF HOURS**

- Monday 10 am to 12 pm
Tuesday 7 pm to 9 pm
Wednesday 10 am to 5 pm & 7 pm to 9 pm
Thursday 7 pm to 9 pm
Friday 10 am to 12 pm
Saturday 10 am to 12 pm

To search the Library catalog, put a hold on a book or DVD in our collection, and get the latest Library news, visit our website: www.shrewsburylibrary.org.

To order or suggest a book to add to our collection, please contact Donna Swartz for children's and Young Adult books, and Joan Aleshire for adult fiction and non-fiction books: joanaleshire@vermontel.net.

We're delighted to announce that JENNY WELLENIUS has joined our Board of Trustees. JENNY and her family have owned a house in Shrewsbury for many years, and visited often, before becoming full-time residents this year.

THANKS to everyone who bought books for a record amount at this year's Book Sale. And a HUGE THANKS to the crew who helped pack up, load, and transport the remaining items to various places for re-sale.

MANY THANKS to BECKI BATES for her informative and heartfelt presentation on her recent visit to Israel; and to Shrewsbury Community Church for welcoming us to use the Sanctuary for this well-attended program.

MANY THANKS to RANDELL BARCLAY for his excellent program on Rotary's humanitarian work around the world. It was a pleasure to hear about such fine projects and to listen to such an experienced presenter!

WANT TO BORROW BOOKS, BUT CAN'T GET TO THE LIBRARY? Please feel free to contact Elijah LaChance: elijahtlchance@gmail.com.

**Coming Events:**

Friday, November 8 @ 7pm: SCOTT GARREN will help us explore the mysteries of A. I. Please see Scott's article in this issue of The Times, and be prepared for a clear and well-informed introduction to this important topic.

**SAVE THE DATES:**

Saturday, December 7 @ 7pm: ANNUAL COOKIE SHARE, SILENT AUCTION & HOLIDAY PARTY!

Saturday, December 14 from 12pm-2pm: Filmmaker GEORGE WOODARD READS from, and signs, his new children's book, The Christmas Calf.

**Continuing Programs:**

Sunday, November 3 @ 4pm: WRITERS' GROUP. If you're interested, contact Penelope Weiss: pw9@earthlink.com or Joan Aleshire.

Sunday, November 17 @ 4pm: FAMOUS BOOKS BOOK CLUB Next Book. Gather by Ken Cadow: the VTReads 2024 selection! Books are in the library.

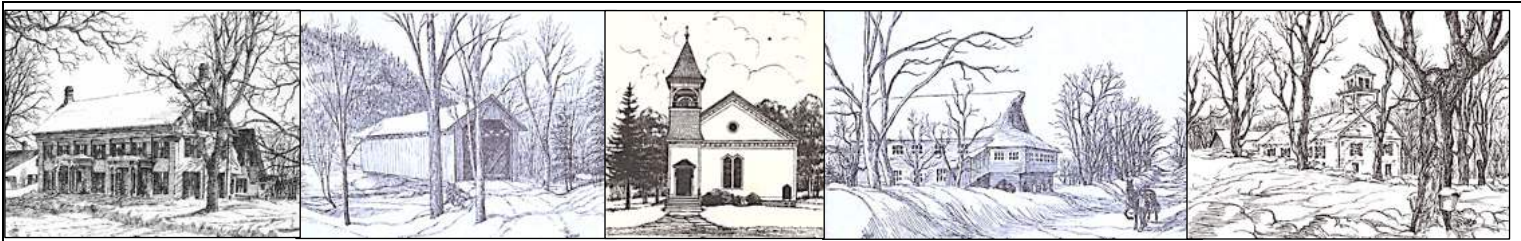
Sunday, November 24 @ 4pm: SCIENCE BOOK CLUB: Cosmic Queries: The Star Talk Guide to Who We Are, How We Got Here, and Where We're Going by Neil deGrasse Tyson. Copies will be available at the Library. Contact Margery Salmon: salmonm@vermontel.net.

**New Books include:**

- \* How to Love a Forest: The Bittersweet Work of Tending a Changing World by Nathan Tapper.
\* Lovely One: A Memoir by Ketanji Brown Jackson, the Supreme Court Justice.
\* Can We Talk About Israel: A Guide for the Curious, Confused, and Conflicted by Daniel Sokatch. (Recommended by Becki Bates)
\* Things You May Find Hidden in My Ear: Poems from Gaza by Mosab Abu Toha, the first book of poetry by a Palestinian poet.
\* Be Ready When the Luck Happens: A memoir by the popular celebrity chef, Ina Garten.

Explore the Mysteries of A.I.
AI is everywhere these days.
What is it?
Where did it come from and where is it going?
Should we fear it and regulate it?
Or, encourage and embrace it?
These and other questions are very much open issues.
Join us to explore and discuss them.
Friday, November 8 at 7pm
at the Shrewsbury Library
Scott Garren, 802-492-2284





## THANKS, GRACE!

*"It's a gift.... and I want to share it" ~Grace Brigham*

...and share it she has! From the livestock judging rink and exhibit halls at the Tunbridge World's Fair, to the walls at the New England Maple Museum, one can find Grace Brigham's artwork around Vermont, but nowhere more than in her hometown of Shrewsbury where the 2010 Annual Town Report was dedicated to her. She has made signs for the roads, posters for the windows, painted murals on the walls of the Meeting House, created postcards for the Moose, and made endless drawings for the *Times of Shrewsbury*. She has provided joyful creative experiences for countless young people. And that's just the beginning of the list!

From flat to three dimensional surfaces, she has shared her talent thru charcoal, pen & ink drawings, acrylic, oil paintings, and huge papier mâché creations.

Grace's drawings and paintings are not only color and form, they are most of all stories. Stories about events and individual people. Viewing her paintings is viewing history...a time that was and a time that is.

Ask Grace a question (about almost anything) and as she begins to answer she suddenly recalls someone and something from years ago. She remembers events, the people, and something special about each one. When you see her drawings of people marching in a parade, they aren't just stick figures or generic renderings, they are a recollection of a time, an event, but most of all of a real Shrewsbury! She treasures those times and especially those people who bring back so many happy memories.

"March 29, 1947"...that's when Grace's family moved to Shrewsbury. She says her parent's thought that surely it would be springtime in Vermont in March so they drove up Route 7 in

their Model A Ford with a little trailer on the back and her rabbit (*Checkers*) aboard. She remembers her wide-eyed wonder at the snow coming horizontally instead of vertically..."just coming right at us out of the North" so they had to bail out and spend the night in a farmhouse with some very kind people they didn't know. "I remember having breakfast and then we kept going north. I never got to see their cows. I'm sure my parents weren't enjoying the trip as much as I was. It was my first Vermont adventure!" She was 4 years old!

When asked about her years growing up in Shrewsbury, Grace said "Oh, jeepers...I went to school, came home, and grew up!" One thing she does remember are the sled runs on Shunpike Road all the way from the top. "we would try to get to Ridlon's barn without stopping...and that's a very steep, long run!

After high school, Grace went to Goddard College and attended the School of the Museum of Fine Arts in Boston. With degree in hand, she taught school in grades 3-8. She also worked to complete significant wall murals in several venues around the state.

The first drawings by Grace for the *Times of Shrewsbury* appeared on the front page of the July 1976 issue, and she has been frequently contributing since. Only a few of those submissions are pictured in this issue along with a few of her paintings.

Grace delights us in so many ways with her whimsical artwork and her love of this place where we live! This centerfold tribute acknowledges with heartfelt appreciation the gift she has shared with us all in the *Times of Shrewsbury*.

*~Written and compiled by Chryl Martin  
~Artwork over many years by Grace Brigham  
To view more of Grace's artwork, visit:*

*<https://shrewsburyhistoricalsociety.com/gracebrigham/>*







## Artwork and themes in the Times of Shrewsbury



### Pepé Le Shrew

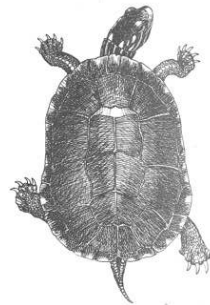
Grace loves Shrewsbury...and she loves a litter free roadside! Thus, she goes into high gear to promote Green Up Day each year with the aid of "Pepé Le Shrew." Pepé makes an appearance in all the Green Up Day posters in the *Times of Shrewsbury* with his enthusiastic appeal to join the effort to clean up our town!

When Green Up Day is over, Pepé takes off his cape and marches with his fellow Shrews to promote Shrewsbury Day...or fight invasives...or help with other worthy causes!



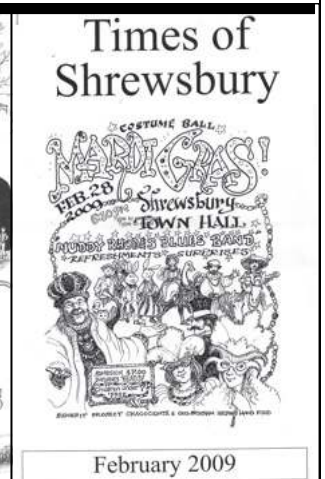
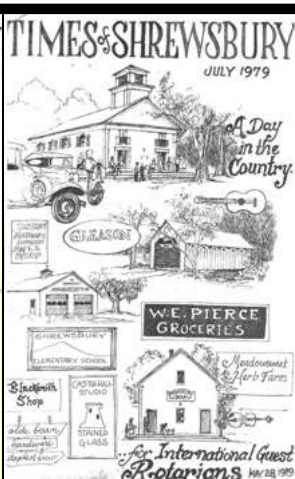
### Shrewsbury Outing Club Turtle

In the 1970's Grace's mom printed up a whole bunch of postcards with the image of a turtle that Grace had drawn. She says "we used to send turtles out every year to let people know of Outing Club Meetings. So now we try to always have the turtle on notices from the Outing Club!"



### Cows, Cows, Cows

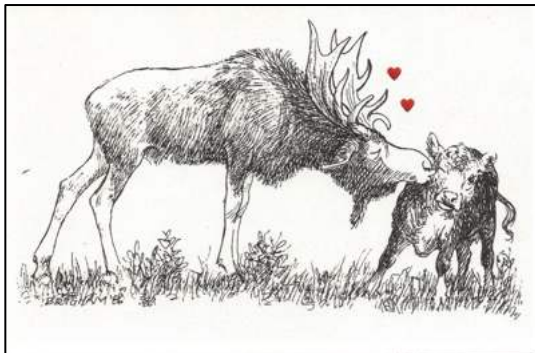
Grace has an affinity for cows...from drawing and painting them to milking them! Since 1975 she has steadily had a cow, but she remembers when the barn at the house where she now lives was full of them..."beautiful, big, fat animals!"







## Artwork and themes in the Times of Shrewsbury



### THE Moose

Worldwide attention was focused on Shrewsbury in 1986 when Josh (THE Moose) had a fling with Jessica (the cow) in a Shrewsbury pasture. Grace got busy and drew the scene on a memorable postcard. *(If you don't know about THE Moose, read the Times of Shrewsbury THE MOOSE Special Edition online)*

Grace has also drawn the moose with his unique left antler on many posters reminding us all to recycle and keep our roadsides free from trash.

### Paper Mâché Creations

Grace solicits the input and help from others in her path as she whirls around town in her Subaru that is filled with an incredible assortment of memorabilia and about to be memorabilia. From her years as a teacher at the Shrewsbury Mountain School she has worked with youth which she continues to do...and now she has enlarged the circle to include her neighbors and friends of all ages to make all manner of creations.

There have been many paper mâché masks made, and she has orchestrated larger-than-life size beings such as Mother Earth, The Moose, and seven horses including a Trojan horse! All have made appearances in parades and pageants.

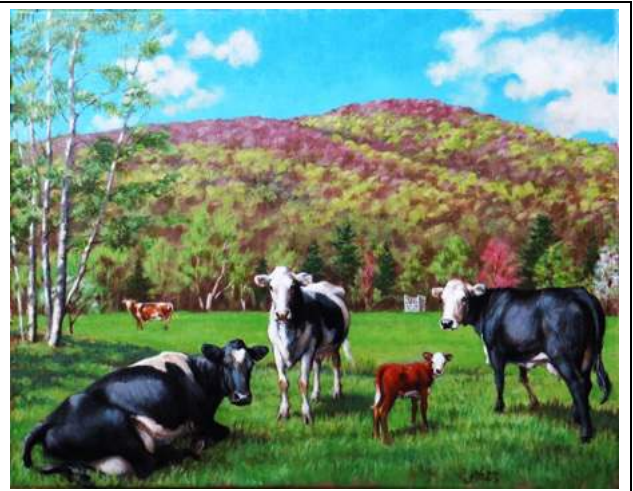
The thing she is adamant about is that she never does them by herself, it is always with others; but her enthusiasm, skill, and vision are paramount to these wonderous creations.







*Celebration by a Pond*

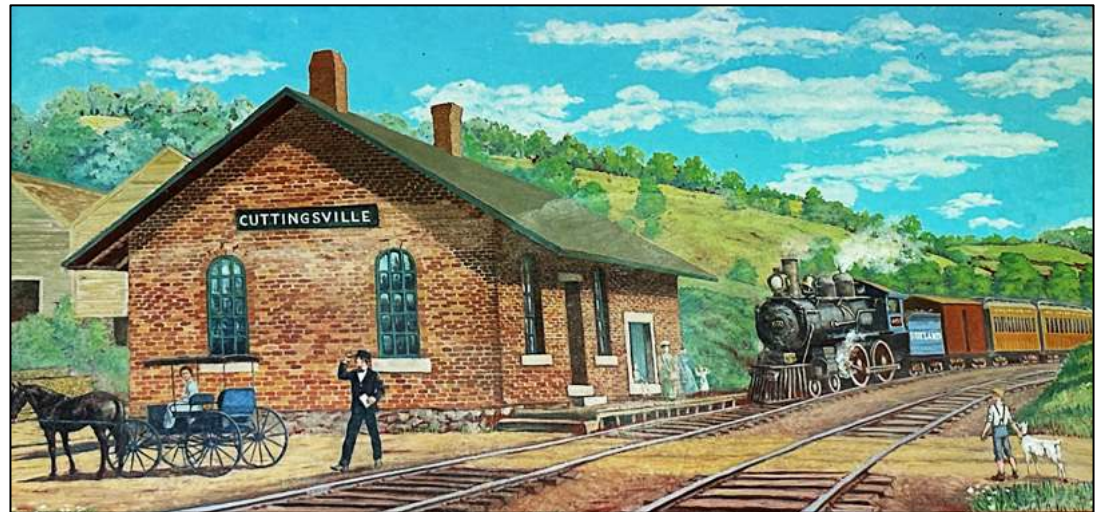


*Kinsman Hill in the Spring*

### Paintings and Murals by Grace Brigham



*Gathering Sap*



*Cuttingsville Train Station*



*Wall murals featuring the early history of maple sugaring*

*(The color and/or detail of the images above may differ from the actual paintings.)*



# Shrewsbury Historical Society

www.shrewsburyhistoricalsociety.com

## Ahh, Fall

The Museum will be open for the last time in 2024 on October 27 just before Halloween. We do open in case of requests for research. Appointments can be made by calling the President, Brian Winkler at 802-492-3324. After the Museum closes, members prepare the artifacts for a long winter's night. The first meeting of the Historical Society 2025, will be announced in the *Times of Shrewsbury*.

## Shrewsbury Day 2024

The wonderful huge moose hand-crafted by Grace Brigham and friends is on view in the Museum for those who heard all about it when he appeared on Shrewsbury Day to celebrate the Mountain School 50<sup>th</sup> Anniversary.

## Cuttingsville events

"Tap to Table" earlier this month was a village event that encompassed the Stewart Maple folks with their lawns full of booths showing off their wares, music, food trucks for snacks, and gaiety. The Bowman Mansion had tours and the Historical Society Museum entertained many curious visitors.

## Hear ye, Hear ye

Are you interested in Shrewsbury's history? The Shrewsbury Historical Society needs YOUR help. We are an all volunteer group who meet once a month in the Museum from May to October. We do pay dues. We have an Election of Officers at our last meeting of the year, in October. We have been fortunate in our annual appeal to the voters in Shrewsbury in March. Our Museum was once a church building, which we respect and honor in exhibits. We have many committees to choose from. We invite you to come to a meeting, or just join up. Dues are payable on the first of January to end in December. They are \$10 for single, \$15 for a family, \$30 for Contributing and \$125 for Life (single or couple). They can be mailed to Treasurer Julanne Sharrow, 1368 Lincoln Hill Road, Shrewsbury, VT 05738, or at a meeting.

At present, we have about 12 active members, and we do need more. Check out our page in the Town's Annual report which is mailed out in late February to all postal patrons in Shrewsbury. We do need your help and encourage your ideas for future programs and new exhibits.

## Anecdote

On the list of needed repairs to the historical church building museum is the repair of stained-glass windows. It is hoped that a grant will help as it will be very expensive. I have a cute story about the large Foster window, stained in many colors and is installed on the altar wall on the left side. I was actually present as our Society received the agreement with the Community Church that day. Also, after that service, a local group headed by a Preacher had a meeting of men. During their service, one gentleman recalled that when he, as a little boy, sat in this church during services, he got hungry cause the stained-glass window showed what looked like several hot dogs at the side and bottom of that window. Many laughs later, the service ended. Come to see this.

Aren't we lucky to live here in Shrewsbury, a beautiful town, with its kind people and special wild life, and good weather?

*Submitted by Ruth Winkler*



## SHREWSBURY CENTER CEMETERY

Thank you, thank you to the many of you who arrived with shovels, wheelbarrows and the will to work. You came from Seattle WA, Oregon, New York, Rutland, Ludlow, Castleton and of course Shrewsbury. Gretchen Nichols came from Mendon to volunteer, her lessons on headstone cleaning were invaluable. Some of our local legislators, Senator Brian Collamore & David Weeks along with candidate Kevin Winters also came as part of our crew. Our SPECIAL THANKS to Tom Giffin and the crew of the Vermont Old Cemetery Association (VOCA) Team. Because of VOCA and the many hands of our volunteers, quite a few of the old stones were cleaned and now their history can be viewed while other broken historical stones were up righted, repaired and received new foundations

Without you, we would not have had the knowledge or manpower to complete all that we did. With Tom's guidance, we are in hopes of having one more workday next year to hopefully complete the repairs and uncover the history of the century plus year old gravestones. This process is necessary to preserve our historic burial grounds. (To support Tom Giffins efforts thru VOCA go to: [Vermontoldcemeteryassociation.com](http://Vermontoldcemeteryassociation.com) and become a member.)

Support the Center Cemetery: Mail your donation to:  
Shrewsbury Center Cemetery Association  
2450 Lincoln Hill Road, Shrewsbury, VT 05738  
Donations for preservation accepted

Should you find it in your heart to make a contribution, both entities are in need. Thank you in advance for your consideration and contribution.

Shrewsbury Center Cemetery,  
Cemetery Rd, Shrewsbury, VT

*~Submitted by Mary Smith*

*~Photo by Liesbeth van der Heijden*



## The Shrewsbury Community Church



Compiled by Sue Ransom-Kelley

### Reflections

I went to the talk by Becki Bates that was sponsored by the library. She spoke about her experience of being in Israel since the Gaza incursion into Israel. She spoke about the conflict itself which was very informative.

Becki gave a message that spoke her truth. Her message was very simple. In the Israel/Arab conflict both sides are complicit. Both sides have some good things and some bad things about them and each has done some good and bad things. Both sides need to get together to figure out how to live together in peace and in love. Basic truth. It's the Golden Rule, the story of the Good Samaritan. It's about connection and love over division, fear and hate. On a kindergarten level it's about playing nicely together in the sandbox.

Why is it so hard for the world to act on this idea? It's not new. The conflicts have not changed. Just the players. We have been killing our fellow brothers and sisters since the beginning of time. We all need to work to keep our instincts in check and our temptations at bay. We can only do this with the help of our common creator. We all need to reach out in love for those that are on the other side, to those that are different from us, to those who are in a different group that we have been socialized and enculturated to dislike, put down and demean. We create boundaries, walls, divisions. This is not our Creator's way or what we were created to be.

It's vitally important in today's world for us to be aware of the divisions that we live with as we negotiate across boundaries, as we reach across the fence, as we open the closed gate to our neighbor's yard. Becki is a good example of her using her despair and distress over the situation in the whole Middle East right now to then educate herself, learn and come back and do an old-fashioned Show and Tell for us. We are truly blessed to have had her remind us of that which we know and that which we can do in our own way, in our own faith. We really are just one people underneath all of the other stuff. May we live as one in peace and love.

*By Pastor Karen Braeutigam, Shrewsbury Community Church*

**Holiday Giving:** We will be providing **gift and grocery cards** for folks in Shrewsbury during the holiday season. If you or a neighbor would like to be included, please call Sue at 802-492-3738 or 802-779-4825.

Special thanks to all who supported our Lasagna Dinner! This enables us to raise funds for our Community Sharing Project which provides gift and grocery cards for folks in Shrewsbury! We humbly thank the Smiths from Maple Crest Farm for providing the homegrown beef for our lasagna!

The kids from the **Fun Day Program** made a recent visit to Stone's Throw Farm in Shrewsbury to meet the sheep and alpacas! They had a wonderful time! We thank Sone's Throw Farm for hosting our visit! The kids have been working to raise money to buy a sheep and some rabbits to donate to families in need through the Heifer Project.

Exciting things are happening at the Shrewsbury Community Church! We will soon be decorating the sanctuary with fresh balsam wreaths, poinsettias, our nativity scene, and a glorious Christmas Tree! All are welcome to join us any Sunday at 10:30 at the center church which is on the second floor of the meeting house. Come and enjoy beautiful music, hear an uplifting message, and visit with your neighbors.



Annual Wreath Decorating Event! On November 10 at 10:30am the kids will meet at the center church to cut greens, making, and decorating their own balsam wreaths to take home! All are welcome to join us! If you would like to participate in this activity, please call Sue 802-779-4825 or Cortney 802-683-7852 so we make sure to have enough supplies for each child.

### Shrewsbury Community Church Calendar

- Sunday, Nov 3, 10:30am Fun Day Program for kids. Worship Service and Holy Communion led by Pastor Karen Braeutigam.
- Monday Nov 4, 2:00pm Book Study Group. Upstairs at the Meeting House.
- Sunday, Nov 10, 10:30am Fun Day Program for kids Wreath Making. Worship Service led by Pastor Karen Braeutigam.
- Monday Nov 11, 2:00pm Book Study Group. Upstairs at the Meeting House.
- Sunday, Nov 17, 10:30am Fun Day Program for kids. Worship Service led by Pastor Karen Braeutigam.
- Monday Nov 18, 2:00pm Book Study Group. Upstairs at the Meeting House.
- Sunday, Nov 24, 10:30am Fun Day Program for kids. Worship Service led by Pastor Karen Braeutigam.
- Monday Nov 25, 2:00pm Book Study Group. Upstairs at the Meeting House.
- Tuesday, Nov 26, 12noon Prayer Shawl Meeting at the Center Church Meeting Room. Knit or crochet shawl, lap blankets, or baby blankets to give to those in need of comfort or celebration. Bring a bag lunch. Dessert and drinks served. All are welcome to join us! Call Roxanne 802-492-3675.

### Remembering our Loved Ones

If you would like to have a wreath or poinsettia placed in honor or in memory of a loved one in the sanctuary for the holiday season, please make checks for \$20 for a wreath or \$10 for a poinsettia payable to Shrewsbury Community Church and mail to:

**Sue Kelley, PO Box 366 Cuttingsville, VT 05738**

\_\_ Wreath or \_\_ Poinsettia in honor or in memory of:

Given by:



### Community Food Shelf

Free Community Food Shelf at the Library in the front entry way. Those in need are welcome to help themselves any time the Library entryway is open. Limited hours are: Mon 10am-12noon; Tues 7-9pm; Wed 10am-5pm and 7-9pm; Thurs 7-9pm; Fri 10am-12noon; and, Sat 10am-12noon.

We have our additional Summer Food Shelf on the side porch at Pierces Store in North Shrewsbury. Those in need are welcome to help themselves.

Food Delivery and Assistance If you are unable to get to the Food Shelf at the library in Shrewsbury, we will deliver groceries to you. If you need items which are not available on the shelf we can provide grocery gift cards. Call Karen at 802-558-5991 or Sue at 802-779-4825 or 802-492-3738.

### Community Needs

- Wedding, Funeral or Memorial Service Requests: Contact Donna Smith 802-492-3367; or Sue Kelley 802-492-3738, 802-779-4825
- Community Helping Hand Requests: Contact Donna Smith 802-492-3367; Sue Kelley 802-779-4825, 802-492-3738; or Karen Lorentz 802-558-5991. Shrewsbury residents experiencing financial hardship. Assistance can be given for basic needs (food, heating, gasoline, etc). If you or a neighbor are in need, please let us know!
- Pastoral Care, Home, Hospital Visitation, Outreach Requests: Contact Roxanne Ramah 802-492-3675 or Ruth Kinne 802- 775-5318.

### Thankful for the Harvest

An annual tradition at Spring Lake Ranch is our Harvest Dinner, our version of a festive early Thanksgiving. This year's menu included rib roast with chimichurri, butternut lasagna, tomatillo soup, fall salads, pies, and more. Every dish featured ingredients from our property—mushrooms from the forest stand, beef from our pasture, and late summer crops from rows that residents tended throughout the year.

Before eating, we gathered in a circle to share written messages of thanks. One said, "Grateful for our friends with dirt beneath their fingernails!" And another: "I appreciate the change of seasons, how nature changes, and food that comes with each season." After we shared, the circle changed to an excited line waiting for hot dishes from the kitchen. Warm cider warmed us while the music was drowned out by the buzz of hungry, happy Ranchers. Here's a recipe you can try for Thanksgiving this year!

### Butternut Squash Lasagna

- |                                              |                                |
|----------------------------------------------|--------------------------------|
| 1 (1 1/2 to 2-pound) butternut squash, cubed |                                |
| 1 tablespoon olive oil                       | 3 1/2 cups whole milk          |
| Salt and pepper                              | Pinch nutmeg                   |
| 1/2 cup water                                | 3/4 cup fresh basil            |
| 3 amaretti cookies, crumbled                 | 12 no-boil lasagna noodles     |
| 1/4 cup butter                               | 2 1/2 cups shredded mozzarella |
| 1/4 cup all-purpose flour                    | 1/3 cup grated Parmesan        |

Preheat oven to 375°F. Heat oil in pan over medium-high heat. Add squash, season with salt and pepper, and toss to coat. Add water, cover and simmer over medium heat until the squash is tender, stirring occasionally, about 20 minutes. Cool slightly, then transfer to a food processor. Add amaretti cookies and blend until smooth. Season to taste with more salt and pepper.

Melt butter in saucepan over medium heat. Add flour and whisk for 1 minute. Gradually whisk in the milk. Bring to a boil over medium-high heat, then reduce to simmer and whisk until the sauce thickens slightly, about 5 minutes. Add nutmeg, then transfer half the sauce to a blender. Add basil and blend until smooth. Return the basil sauce to the pan and stir to blend. Season with salt and pepper, to taste.



Grease a 13x9x2-inch glass baking dish. Spread 3/4 cup of sauce on bottom of dish. Arrange 3 lasagna noodles on top. Spread 1/3 of the squash puree over noodles. Sprinkle with 1/2 cup of mozzarella cheese. Drizzle 1/2 cup of sauce over noodles. Repeat layering 3 more times.

Tightly cover the baking dish with foil and bake for 40 minutes. Uncover and sprinkle the remaining mozzarella and Parmesan cheeses over the lasagna. Continue baking uncovered until the sauce bubbles and the top is golden, about 15 more minutes. Let the lasagna stand for 15 minutes before serving.

~Article by Rose McCracken  
~Photo by Ben DeFlorio

## BRANCH BROOK EXCAVATING LLC

Driveways / Harley Raking / Ditches and Drains /  
Land Clearing and Reclaiming / Stump Removal /  
Retaining Walls; New and Old /Ponds/Power, Gas,  
and Water Line Burial/ General Dirt Work



Benjamin Turco

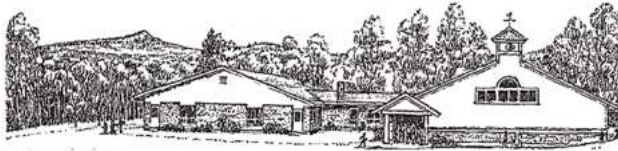
1269 Branch Brook rd

Mount Holly, VT 05758

Phone: (802)770-8964

branchbrookexcavating@gmail.com





## SHREWSBURY MOUNTAIN SCHOOL

We have been celebrating opportunities to extend our learning beyond the grade level classroom this Fall!

### Important Dates:

- 10/31: Trunk or Treat sponsored by our PTO!
- 11/11: No School - Veterans Day
- 11/12: SMS School Picture Retake Day
- 11/18: Half Day Release for professional development
- 11/27-29: No School - Thanksgiving Break

### SMS Harvest Festival:

We had an AMAZING Harvest Festival created by our teachers on September 26th!

Students were able to taste test foods cooked by our classes using ingredients from our garden. Students walked to each station with their "passports" and tried food at a station, got a sticker in their passport and then selected one of three choices. 1) I liked it, 2) I love it, 3) I need to try it again. '

Food stations: PreK = Sun Tea, Grade K/1 Fresh salsa and watermelon cucumber punch, Grade 2 - garden salad with homemade ranch dressing, Grade 3 and 4: Eggplant fries and fresh marinara sauce, and Grade 5 and 6 Eggplant curry. All our students were so brave and tried new foods and voted for their preferences.



After students were able to visit each station, they transitioned to indoor craft activities in a free-range style where they had voice and choice about which activity they chose. The activities were led by our amazing SMS teachers:

- Julia Bonafine - dipping fall leaves in beeswax
- Tammie Engelhart - pumpkin clay coil pots
- Julia Wyman - Q-tip paint autumn trees
- Erin Rice - pumpkin tic-tac-toe
- Colleen Levins - cornstalk keychains
- Sabrina McDonough - pumpkin ring toss and pastel leaf rubbings
- Linda MacFarlane - Leaf rubbings with fragrant herbs

At the end of the festival, we all returned to the gym and Julia Bonafine, our Sustainability Teacher Leader, guided us in making observations about the data collected at each food

station and we celebrated together how wonderful our students collaborated and were kind to one another while learning and having fun! Check out the Facebook page for all the photos!



### Shrewsbury Volunteer Fire Department Presentation:

The Shrewsbury Volunteer Fire Department and Sparky, the Fire Dog, presented an all-school assembly where students learned about the importance of avoiding fire hazards, checking smoke detectors and how to be prepared to call 911. After the school presentation on school safety, each class was able to visit the fire truck as well as being guided through a fire safety trailer with expert Bob Snarski. He taught students how to recognize potential fire hazards in a "pretend home" and was able to teach students, in an authentic and meaningful way, how they can be more safe. We are so grateful for our local heroes who make this learning experience each year unique and informative so that our students can be prepared if an emergency should happen! Our volunteer fire department is always looking to have additional community members join them in this important service to our town. Please reach out to Fire Chief, Phillip Severy, if you would like to volunteer.

### HUGE THANKS!

The staff and students of SMS would like to extend our gratitude to our PTO and Playground Committee for their endless dedication to the students and families of Shrewsbury Mountain School. I am so excited to announce that a donor has come forward and promised to match all playground donations made before the end of the calendar year up to \$25,000. Please note that all donations to the school are tax deductible.

We are so grateful for all the support of our students at SMS!

~Submitted by Kristin Cimonetti, Principal  
802-786-3995 [kcimonetti@millriverschools.org](mailto:kcimonetti@millriverschools.org)

**Blume**  
VERMONT

### Holidays With Blume Vermont!

Wreaths, Florals, Trees, Christmas light installation, and Styling.

Call for a free quote 802-353-8434!

Handmade Wreaths with dried flowers-  
Pop up Shop every weekend in November at the farm!

Check out our website for more information!  
<https://www.blumevermont.com/about-us>



# TIMES OF SHREWSBURY

ONLINE

<http://www.shrewsburyhistoricalsociety.com>

AND

[www.shrewsburyvt.org](http://www.shrewsburyvt.org)



**Grades 3/4 Girls soccer Players**  
Eliza S., Kayla C., Isabelle P, and Laurel S.



**Grades 3/4 Boys Soccer Players**  
(L) Wylie S., (Center L to R) Cooper A., Christian B., Everett S.,  
and (R) Crosby D.

## SHREWSBURY MOUNTAIN SCHOOL 2024 Soccer Players



**Grades 5/6 Boys Soccer Players**  
(l to 4) Jack A., Liam F., Conrad S.,  
Oliver S. & Gavin J.



**Grades 5/6 Girls Soccer players**  
(l to r) Annabel M., Ellie M., Makayla H.,  
Benna M., Netti W., & Hadley C.





### BOOK REVIEWS

- \*\*\*\*\* *Fantastic*
- \*\*\*\* *Compelling page turner*
- \*\*\* *Enjoyable*
- \*\* *Just O.K.*
- \* *Not recommended*

**The Wind in the Willows**  
by Kenneth Grahame

★★★★★

I've long been curious about this delightful little book. It was never read to me as a child, but the title has haunted me for years. It doesn't qualify as a haiku—nor does another favorite book title, *Snow Falling on Cedars*, but the words are lovely. And this is a classic. The author was born in Edinburgh, Scotland, and he began entertaining his little boy with fanciful tales. He published the stories in 1908, and since then, generations of youngsters and imaginative adults have been enchanted by the adventures of Rat, Mole, Badger, and Toad. What a treat! ~Reviewed by Marilyn Dalick

~~~~~



### SUGAR MAPLES WANTED

Hello,  
We are a local Shrewsbury family who are trying to make maple syrup with our child. We are looking for 10-20 sugar maples to hang some buckets on! If anyone can point us in the right direction, we would greatly appreciate it!

Please email Jen at [jwedin45@gmail.com](mailto:jwedin45@gmail.com) or call/text Eric at (802) 779- 1460.

*Thank you, Eric, Jen and Emmaline Wedin*

### NATURE'S TURN, LLC



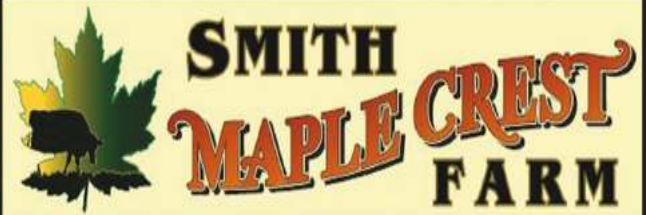
**Gerry Martin**

998 Lincoln Hill Road, Shrewsbury, Vermont 05738

1-802-492-2244

[naturesturn@yahoo.com](mailto:naturesturn@yahoo.com)

### Small Farm Flavor & Quality!



**VT MAPLE SYRUP & GRASSFED BEEF**

#### OUT FOR A DRIVE?

#### COME & SAMPLE OUR VERMONT MAPLE SYRUP

Maple Candies	Locally Sourced	Ground Beef
Maple Cookies	Pork (cuts)	Grilling Steaks
Maple Spices, Marinades	Chicken (cuts)	Ribs, Roasts, Briskets
Sugar and Snacks	& Eggs	Sausages & More


Gift bags of Vermont Goodies and Meat Freezer Boxes Available

**OPEN: WED THRU MON 10 AM - 5 PM**

2450 Lincoln Hill Road, Shrewsbury VT. 05738

[SmithMapleCrestFarm.com](http://SmithMapleCrestFarm.com) 802-492-2151 [maplecrest.info@gmail.com](mailto:maplecrest.info@gmail.com)

**We ship syrup all over the USA**

From: Rutland: Left off VT RT 103 just 2.5 miles - on the right  
 From: Cuttingsville: Just 2.1 miles up Town Hill Rd, right on Lincoln Hill Red Barn on right

### WANTED

### Town Auditor

The Shrewsbury Board of Auditors is responsible for reviewing the financial statements for the Town of Shrewsbury, and preparing the Annual Report.

- Interested in serving the community?
  - Comfortable working with Microsoft Excel?
- If so, this might be an opportunity to help the Town!

If you can balance a checkbook, you can handle the Town's auditing tasks. Accounting experience would be a plus but not necessary. We provide instruction and work sheets to help guide you.

Compensation is available.

For more information, please contact either:  
Michelle Greene, [auditshrewsbury@gmail.com](mailto:auditshrewsbury@gmail.com), or  
Sandy Bragg, [sandy.bragg@gmail.com](mailto:sandy.bragg@gmail.com)

Free Will Donations

# Concert Series

At The SAGE Russellville Schoolhouse

18 Crown Point Rd Shrewbury VT

## SILAS & FRIENDS

7pm Thurs.  
Oct. 31st  
HALLOWEEN  
{costume}  
concert



## Silas Hamilton and Willy Clemetson

7pm - Fri Dec. 6th  
Warm Songs For A  
Cold Day



While Supplies Last





## Report on Walk and Talk: A Naturalist's Tour of a Path in the Woods

On October 12 an enthusiastic group enjoyed a gorgeous fall walk through Diane and Jeff Jakobsen's fields, forests and along the banks of the Cold River. We enjoyed cider and homemade donuts, Autumn leaves at peak foliage and fabulous mountain views of Shrewsbury, Mendon and Killington Peaks.



*The participants with colorful high peaks in the background.*

Some new folks joined us along with our regulars and it was nice to see friendships and connections being formed. This was a very social, fun group!

If you are interested in learning about the wildlife in your backyard, a trail camera is a fun way to record your visitors. Diane and Linda discussed tips for the location and set up of trail cameras. Game trails, pinch points, scent marking and feeding spots are all good spots for capturing wildlife. Linda suggested trailcampro.com as a place to shop and learn about different cameras. We talked about a reasonably priced camera that trailcampro.com sells, that takes color video and photos at night. This is the GradePro white flash camera. Linda also suggested using a metal box to protect your camera. Camlockbox.com is a good site to for these.

As we stopped at each of Diane's camera locations, she shared pictures and videos of the wildlife captured from that spot. Bobcat, bear, porcupine, fisher, moose, coyote and a gray fox family were all captured by her cameras.

We found scat! Coyote! And bear sign, where digging around a stump for grubs occurred.



We found a small hemlock tree where a fisher regularly stops by to leave scent during mating season. Diane was able to demonstrate just how the fisher accomplishes this task! (see photo)

The grand finale was a camera location in black raspberry bushes, close to the Jakobsen house. Diane was hoping to get pictures of a bear feeding on berries here. Upon further investigation she found a well-worn hidden spot deep in the berry patch. After braving a crawl thru the berry tunnel, Diane's camera captured a family of gray fox kits. She showed us a video of the kits playing and then a very unexpected surprise. Mama fox brought a very large fish for the kits to feed on. She must have caught the fish in the Cold River and carried it almost a mile back to where the kits waited. This meal lasted several days and the little kits fed on their fish right in front of the camera! ~Article by Linda Shelvey



## Shrewsbury Conservation Commission

### Trail Camera Picture of the month



(Left) This month we have a Magnificent Moose from Sally Deinzer.



(Above right) Diane Jakobsen captured gray fox kits, deep in her blackberry bushes. (Right) Mama gray fox brought the kits a large fish. They enjoyed it in front of Diane's camera.

If you have a wildlife picture to share, send it to Linda Shelvey [Lpurdyschel@gmail.com](mailto:Lpurdyschel@gmail.com)



## Shrewsbury Conservation Commission

A Celebration of our  
Wildlife Road Crossing Project Volunteers!  
**Luncheon**

**Saturday, November 2 ~ 1:00-3:00pm  
at the Meeting House**

As we enter our fifth and final year of mapping winter wildlife tracks crossing Shrewsbury roads, we would like to thank our hardworking volunteers with lunch and a look at maps showing the four years of data they have gathered. We'd also like to invite anyone who is interested in helping us this final winter, to join us for lunch. We will help you learn about wildlife tracks and explain what you would need to do to help out on one of our road crossing sections.

**PLEASE RSVP:** Linda Shelvey [Lpurdyschel@gmail.com](mailto:Lpurdyschel@gmail.com)



## Pressing Cider

This was a good apple year. Collecting apples was easier than last year, when the late frost cut local harvests by 40%. And our warm dry September amped the sweetness. The average Shrewsbury apple contains around 10% sugar but this year I found apples with higher sugar content, some as high as 15%.

Every year I discover more apple trees, adding to my list of over 300 trees. As of 1880, Shrewsbury had around 1,000 apple trees, according to Dawn Hance's Shrewsbury Vermont: Our Town As It Was. The town still has at least half that many, some in orchards but more as volunteers along powerlines, roads and hedgerows.

To prepare for this year's pressing, I gathered 300+ gallons of apples of various hues of red, yellow and green, ranging from small crabs to very large. Even more apples arrived on the pressing day with the volunteers.

Pressing the apples is a community effort. First comes the sorting, placing apples on a platform, removing the stems and leaves and separating out any apples that are spoiled. Next comes the washing. Sorted apples are dumped in a water trough, then scooped out and carried to the press, which is the star of the show.



The venerable W.G. Runkles press, dating from the 1920's if not earlier, masterfully transforms apples to cider. Apples enter a chute at one end, then ride a ten-foot escalator to be dumped into a grinder. The ground pomace falls into a cloth below and is folded into a bundle about 2' high, then topped by a wooden rack which supports the next cloth accumulating pomace. When the stack is five or six bundles high (called a 'cheese'), it is moved under the press and a new 'cheese' is begun.

Meanwhile, the press descends slowly on the stack of pomace below, and cider begins to run through the cloths. The fragrant amber liquid flows freely while the cheese compresses. As the press nears its maximum extension, a delicate metal finger inches slowly toward the off switch for the machine, then shuts down the machine when the limit of the press is reached, allowing the press to be reset. (The best Runkles wranglers reset the press before the magic finger hits the off switch.)

The whole process works steadily, with folks busy sorting, washing, pressing, shuttling apples from station to station, schmoozing. Over two hours (including time outs when the centenarian press decides to take a breather), the 300+ gallons of apples disappear, replaced by 80 gallons of deep golden-brown cider. Ready to be fermented, distilled, boiled, vinegared, or just savored as is. ~Article by Sandy Bragg

## Announcing our next event: Small Business Saturday the Saturday after Thanksgiving.

Reception at the shop with **FREE** food and drinks, raffles, Black Friday Sales **all weekend long** & giveaways! For more details, check out our Facebook Event page titled "Sip & Shop: Celebrate Small Business"

Find us at: The Olde Barnyard  
5444 VT Route 103, Cuttingsville VT 05738



- Local & Handmade Goods
- Maple Syrup
- Craft Food & Beer
- Home Decor

Hours: Wed-Sun 11am-6pm

Closed Mon & Tues

Contact Us: (516) 522-4174 - hello@wallyscorner.com

Shop Online: www.wallyscorner.com

Follow us on social media under @wallyscorner

**Shop Small, Buy Local**

## TRACTOR WORK

For all your loading, lifting, digging, grading, grapple, winching & brushhogging needs.



Rob Littmann  
802-774-8835  
Shrewsbury, VT

**Front Loader: Bucket, Grapple, Pallet Forks, Bale Spear**

**Backhoe: 16" Bucket & Thumb**

**Brush Hog, Forestry Winch, Grading Blade, York Rake, Pallet Forks, Bale Spear**



## “Bessie”



From the Cairo Shriners, thanking the town of Shrewsbury for allowing the Shriners to participate in the annual Shrewsbury Day parade. We enjoy the experience with the great crowd. The Shriners had a modest presence with Legion of Honor, Drum, Hiram and Mini Cars along with our main “Bessie” character! Bessie had been completely rebuilt with beautiful painting for the event via Grace, Liesbeth, and Betsy. The three did a tremendous job – huge Thank You.

Work on her had spanned over a month with their very great work. Bessie unfortunately had a serious issue at the start of the parade with fuel. She was pulled through with Betsy’s side by side to the waiting trailer to be safe. There cannot be enough heart felt appreciation expressed for the three ladies who put in all that time, which was wonderful –

Again - Huge Appreciations for Grace, Liesbeth and Betsy. Jack donated his barn for this long journey and with a large appreciation. Great team effort for sure.

Being a Shriner is a very comforting feeling because it is all for the Children! With 22 hospitals throughout Canada and the US, with new hospitals going up in Brazil and the Philippines. There are no charges from our hospitals to any patient. Cairo Shriners of Vermont has its three hospitals Springfield Mass, Boston, Mass and Montreal, Quebec which is our district of direct support. Shriner Hospital for Children provides specialty care to children up to age 21 with orthopedic conditions, burns, spinal cord injuries, and cleft lip and palate, regardless of the family’s ability to pay. All care and services are delivered in a family-centered environment.



*Liesbeth van der Heijden, “Bessie”,  
Grace Brigham, and Betsy Jesser*



*Tammy Coltey-First Lady, Grace Brigham, “BESSIE,”  
Liesbeth van der Heijden, and  
Jason Coltey-Potentate Cairo Shriners.*

To learn more about our services, to refer a patient, or to locate a hospital near you visit: [www.shrinershospitalforchildren.org](http://www.shrinershospitalforchildren.org) Or call 800-237-5055 in the U.S. or 800-361-7256 Canada.

Becoming a Mason first then moving onto Shriners is a complete experience easily attained and completely volunteer. Shrewsbury has many Masons and Shriners who are very proud to do this work and see it through. Cairo offers a Masonic Lodge #79 or Mt. Moriah Lodge #96 East Wallingford to become a Mason, or if another lodge is closer, they can assist with that also. Masons are a knowledge-based fraternity which is the oldest fraternity in the world.

For info on how to become a Mason and a Shriner contact: Cairo Shriners, 51 Washington St., Rutland, VT 05701 or call 802-747-3400 – 24/7 service. ~Submitted By Past Potentate Bob Ferguson, Cairo Shriners, Rutland

### Calling All Photographers!

The Shrewsbury Board of Auditors is soliciting recent photographs of Shrewsbury life for the town’s 2024 Annual Report.



We particularly value photos of Town officers and Town Events (such as Shrewsbury Day, concerts, school activities, etc.), but also welcome scenic pictures from in and around Shrewsbury.

Submit your picture as a jpeg file and email it to [auditshrewsbury@gmail.com](mailto:auditshrewsbury@gmail.com) no later than January 1, 2025. Don’t forget to provide captions identifying people, places, and events. Also, be sure to identify the photographer so we can give proper credit! The Board of Auditors will review the photos and select them based on applicability and space availability. Thank you for your help with our Town Report!  
*Shrewsbury Board of Auditors*



**Second Sunday in March:** Spring Forward,  
The U.S. begins daylight savings at 2am



**First Sunday in November:** Fall Back--  
The U.S. ends daylight savings at 2am

### NOTE: BONE BUILDER WINTER HOURS!



#### Bone Builders

10am – 11am

Every Tuesday and Thursday  
at the Meeting House on Lottery Road  
Free weights and Instruction

Join us to improve your  
Bones, Balance, and Strength





660 Patch Hill Road, Mount Holly, VT

## Private Log Home in Mount Holly

BEDROOMS/BATHROOMS

3/4

LIVING AREA

2,175 Sq. Ft.

ACREAGE

14+/-

PRICE

\$ 925,000



Gail Beardmore  
Gail.Beardmore@EVrealestate.com



126 Main Street, Ludlow, VT 05149 +1 802-975-0338  
okemo.evrealestate.com



Uli Donohue  
Uli.Donohue@EVrealestate.com

©2024 Engel & Völkers. All rights reserved. Each brokerage independently owned and operated. Engel & Völkers and its independent License Partners are Equal Opportunity Employers and fully support the principles of the Fair Housing Act.





Shrewsbury Mountain School and SAGE hosted a group of 10 educators from the Vermont Farm to School & Early Childhood Network in October. They were eager to learn about the challenges and triumphs of Shrewsbury's sustainability education, and had a lot of praise for the staff and administration for making it happen! The tour was capped by a lovely sun tea party hosted by Ms. Melissa and her pre-K!

Ryan Fitzbeauchamp of Evening Song Farm worked with Ms. Bonafine's K-1 class this past month to start a new garden bed in the school garden! Ryan plans to work with students growing, threshing, and winnowing dry beans as well as shucking, shelling, and grinding grain corn.

Ryan and Stephen also spent some time with Ms. Rice's 2nd graders, learning about healthy soil and the importance of mulching. The class then collected leaves to be used for mulching the garden and as a component of the school compost.

And finally, Scott and Stephen have kicked off composting with Ms. McDonough's 5th and 6th graders! The school's composting system ties the farm to school program together and the 5th and 6th graders will tend, monitor, and steward the system beginning this month. It's an important task, and our young school leaders are up for it!

Community music is coming back for the upcoming cozy months, as the Russellville Schoolhouse jam events will be starting up again on December 14, so mark your calendar! These will pop up at 7pm on the second Saturday of the month from December to May! Bring a song to share or come to listen and enjoy.

SAGE, Shrewsbury Agricultural Education & Arts Foundation, has a mission to support and promote sustainable farming and other arts that nourish community life. For more info contact Stephen Abatiell at [educate.sage@gmail.com](mailto:educate.sage@gmail.com), Joan Aleshire at 492-3550 or [www.sagevt.wordpress.com](http://www.sagevt.wordpress.com). Follow us on Facebook for up to date event details at ShrewsburySAGE and find our sustainability and arts videos at [www.youtube.com/@sagefoundation](http://www.youtube.com/@sagefoundation).

*Submitted by Stephen Abatiell*



### Reinbow Riding Center Thanks Supporters

Colorful leaves, colder weather and the fuzzy-coated horses signals it's time for the horses at Reinbow Riding Center to get a well-earned rest until green leaves and green pastures return next spring. Not so for their human companions. Now it's time for us to begin our work developing new programs, enhancing old programs and raising the funds to continue to provide lessons for all regardless of their ability to pay. If you are looking for something to do this winter and would like to get involved with a very worthwhile organization that serves your local communities, please email [programs@reinbowridingcenter.org](mailto:programs@reinbowridingcenter.org) or [janetupton@reinbowridingcenter.org](mailto:janetupton@reinbowridingcenter.org)

At Reinbow Riding we strive to meet the needs of every individual that participates in our programs, mounted or unmounted regardless of their ability to pay. For more information about Reinbow Riding Center and our mission please check out our website: [reinbowridingcenter.org](http://reinbowridingcenter.org) and follow us on Facebook or Instagram @reinbow\_riding\_center and LinkedIn! ~Submitted by Janet Upton



Got your shovel ready?



**THE NEW LEARNING PROJECT**  
CHOOSING TO EXPERIENCE OUR POTENTIAL

MUSIC LESSONS -- Guitar, Piano, and more  
RED CROSS COURSES -- First Aid, CPR, Lifeguarding  
SWIMMING INSTRUCTION  
(More services at website)

**STUDIO IN CUTTINGSVILLE VT**  
[www.TheNewLearningProject.com](http://www.TheNewLearningProject.com)  
[TheNewLearningProject@gmail.com](mailto:TheNewLearningProject@gmail.com)  
802.492.3208

**Marcos Levy**  
Instructor with over 30 years  
of Experience



**PIERCE'S STORE**  
**802-492-3326**  
[www.piercesstore.com](http://www.piercesstore.com)

All of us at Pierce's want to thank the community for your support over the past month! The store has been bright and lively with patrons from near and far. As we get into the colder months we're ramping up on prepared food and continuing to ensure the store is well stocked with all of your needs. We hope you come by!

**New produce this month:**

Acorn and Red Kuri squashes, pie pumpkins, pomegranates, cranberries

**We're busy in the Pierce's kitchen and are proud to offer:**

**Breakfast sandwiches (bacon or sausage)**

**Rotating deli sandwiches on house-made sourdough bread**

**Cinnamon morning buns**

**Seasonal muffins**

**House-made soups**

**Take-home dinners, and more to come**

**NEW Vermont-made products line the shelves, including:**

- Vermont Salumi Capocollo (Barre)
- Big Picture Farm Goat Caramels (Townshend)
- Wooly Bear Soap (Mt. Holly)
- Grafton Village Cheddar
- Strafford Organic Creamery Ice Cream
- High Pond Farm Yogurt (Brandon)
- Abracadabra Coffee Co. Beans (Woodstock)



**This Thanksgiving, Pierce's will once again be organizing Turkey Pre-orders through Misty Knoll. The store will also have a limited quantity of**

**house-made holiday staples, sides and desserts!**

**PLEASE WATCH FOR AN EMAIL ANNOUNCEMENT.**

Not getting our emails? Please sign up at piercesstore.com. Not on the seafood preorder? Please send Helen a message at orders@piercesstore.com. General questions or comments? Please reach out at pierces.store@gmail.com.

*Cheers! Elena and Harry*

**Jazzy Thanksgiving Wine Tasting  
 November 15 from 4-6pm**

Come to Pierce's Store Friday November 15 between 4pm and 6pm to enjoy jazz, fresh pizza and wine (or beer if you prefer!) Emmett Sirjane will be baking personal pizzas in his mobile pizza oven, while a jazz quintet led by saxophonist Al Wakefield performs in Pierce's Garage. Sandy Bragg will be hosting a pre-Thanksgiving wine tasting in Pierce's Store, featuring an airy prosecco, a classy grüner Veltliner, a Paso Robles rosé, this year's Beaujolais nouveau and a highly rated North Coast blend (\$9.99 to \$17.99). All are on sale and perfect complements to the Turkey Day feast. Please join us for a spirited event! ~Sandy Bragg



**News From Pierce's Board**

Hello neighbors! It has been an exciting month at Pierce's as we watch and support our new managers, Harry and Elena, develop their vision for Pierce's. We are delighted by the increase in local items on the shelves and in the coolers, as well as exciting new food offerings, especially some very creative sandwiches and take-out items (have you tried the brisket sandwich with cabbage and pickles? Soooo delicious!). Please come in and see what's new!

This past month we hosted our much anticipated, annual chili cookoff. This event is always well attended and a chance for some healthy competition among neighbors. It is also an important fundraiser for the store, this year raising \$630! Thank you to all who cooked and/or volunteered to help. The winners this year were: 1st place: Lavinia Seide, 2nd place: Jeff Monder, and 3rd place Pam (Freddie) Monder.

Next month we will be hosting our final wine tasting of the year on November 15, from 4-6:00. Sandy Bragg will educate you on a host of offerings for your Thanksgiving table, while Emmett Sirjane will provide pizzas made in his portable brick pizza oven! Several toppings will be offered and a jazz quintet will entertain us. Join us for the fun in our newly heated garage space!

Reminder: Last call for early membership deals! If you renew your membership for 2025 before the end of this year, you will receive a \$10 credit on your Pierce's account. This offer expires on 12/31/2024, so hurry in to renew!

~Submitted by Lily French



Larry Abelman serving chili, and chili cooks Shannon Dake, Pam Monder, & Lily French



Jeff (L) and Pam Monder (R) present the:  
**2024 Chili Cook-Off Queen**  
**First Place Winner Lavinia Seide!**



The Times of Shrewsbury  
PO Box 373  
Cuttingsville, VT 05738

PRESORT STD  
US POSTAGE PAID  
SHREWSBURY, VT  
05738  
PERMIT NO. 2

To: Postal Patron

Donors are recognized for the remainder of the calendar year in which their donation is received. The *Times* is mailed to all residents of Shrewsbury and is also available online. The cost of printing and mailing is made possible through advertising and donations and are very much appreciated, but are not tax deductible. Donations can be made to: *Times of Shrewsbury*, P.O. Box 373, Cuttingsville, VT 05738. **THANK YOU!**

Marti Andersen  
Craig & Peggy Angstadt  
Gary & Minnie Arthur  
Roy Arthur  
Nate & Angela Bailey  
Steve Banik & Virginia Gundersen  
Michael and Elizabeth Bedesem  
Nancy Bell  
Ludy Biddle  
Rich & Cynthia Biziak  
Laura Black  
Karen Braeutigam  
Kristi & Sandy Bragg  
Virginia & Dan Buckley  
John & Linda Calotta  
Mike & Laura Cashel  
Christina Clarke  
Charleen Cole & Ed Garrow  
Doug & Michelle Crowe  
Marilyn Dalick  
Sally Deinzer  
Deb & Sean Delong  
DiPrinzio Family  
Linda & Philippe Ducrot  
Stan & Louise Duda  
Lizzie & Wayne Emmons  
Nils & Pamela Ericksen  
Kathi & Tim Faulkner  
Gene & Kathy Felder  
Margaret Field & Dale Aines  
Todd Frederick & Michelle Greene  
Lily & Eldred French  
Laurel & David Fretz  
Licia Gambino  
Scott Garren & Heather Shay  
Jonathan Gibson & Eliza Mabry  
Richard Gile & Sue Brown  
Mark & Carol Goodwin  
Pam & Peter Grace  
Greenhagen Family  
Barry & Barbara Griffith

John Guidry & Tamako Okamura  
John & Betty Heitzke  
Betsy Hinckley  
Connie & Bob Hoelscher  
Carmine Iannace & Rita Gyls  
Martha Herbert Izzi  
Diane & Jeff Jakobsen  
Jack & Betsy Jesser  
Ellen Jorgensen  
Michael & Angie Lauri  
Ed & Clare Mangine  
Alice & Padraic Martin  
Gerry & Chryl Martin  
Stephen & Patricia Martyn  
Charlotte & Todd Maynard  
Taffy Maynard & Family  
Lynn McDermott  
Linda McGuire  
Jeff & Pam Monder  
Moody Family  
David & Georgia Mosher  
Jack & Joan Mulqueen  
Allan Patrick  
Fran Patten  
George and Doris Perry  
Jack & Sharon Perry  
Ken & Coral Petretti  
Susan & Robert Quinn  
Roxanne Ramah

Reinbow Riding  
Helen & Andy Richards-Peelle  
Ridlon Family  
Lillian & Richard Rohe  
Thomas & Donna Ryan  
Ed & Judy Ryan  
Marjorie Salmon  
Susan Savage  
Brian & Patricia Sedaille  
Kevin & Mary Alice Self  
Gary & Katherine Shattuck  
Alan & Linda Shelvey  
**Shrewsbury**  
Community Church  
Conservation Commission  
Cooperative at Pierce's Store  
Historical Society  
Library  
Mountain School PTO  
Outing Club  
Volunteer Fire Department  
Sirjane Family  
Donna Smith  
John C. Stewart  
Tim & Nancy Stout  
Judith & Dirk Thomas  
Paul & Sarah Titterton  
Jess & Ariane Torres  
Anne Vanneman  
Lana Vanucchi  
Arlene Wallett  
Reesa Watson  
Howard & Deborah Weaver  
Michael & Phyllis Wells  
Nancy West  
Christel Wiedmann  
Ali & Rick Wilson  
Lee Wilson  
William & Peggy Wilson  
Winkler Family  
Mark & Connie Youngstrom

